



*Plan to Empower.*

# REPORT



School Facilities  
Commission

## **Willoughby – Eastlake City School District Lake County**

Enrollment Projections

May 3, 2010

## Willoughby – Eastlake City School District

### INTRODUCTION

---

Based on a request from the Ohio School Facilities Commission, **DeJONG-HEALY** was contracted to develop enrollment projections for Willoughby – Eastlake City School District.

This report contains ten-year enrollment projections for the Willoughby – Eastlake City School District. Enrollment projections were developed by analyzing the following data:

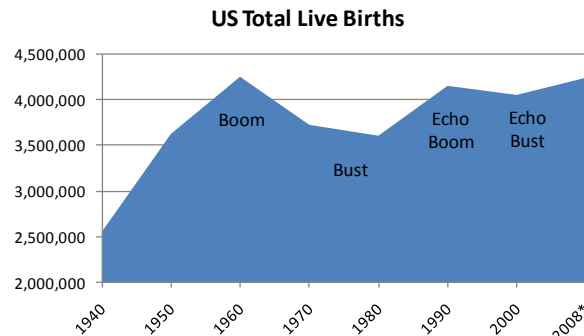
- ▶ Live birth data
- ▶ Historical enrollment
- ▶ Community school enrollment
- ▶ Open enrollment
- ▶ Community demographics
- ▶ Housing information

The projections presented in this report are meant to serve as a planning tool for the future, and, with the historical data and anticipated growth, represent the most likely direction of the District.

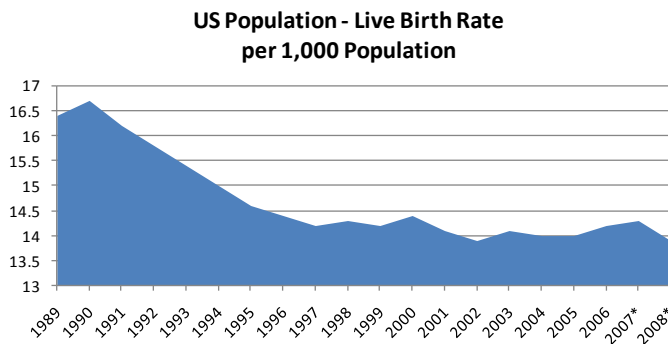
### ENROLLMENT PROJECTION METHODOLOGIES

#### Introduction

Tracing the landscape of the country's public school enrollment back over the past fifty years reveals demographic, economic, and social changes. The United States as a whole continues to undergo major shifts in public student enrollment, due in large part to past events including the baby boom, the availability and use of birth control, and the development of suburbs. The baby boom of the late 1940s and 50s was followed by the baby bust of the 1960s and 70s. This gave rise to the echo baby boom of the 1980s, producing children who primarily graduated in the late 90s through 2007.



Source: CDC, National Vital Statistics Report  
\*provisional



Source: CDC, National Vital Statistics Report  
\*provisional

the average family size increased to 3.2 persons per household. The live birth rate increased for the first time in several years in 1998 and increased again in 2000. However, the birth rate resumed a descending pattern in 2001 and reached an all-time low of 13.9 in 2002 and 2008.

Nationwide, districts continue to experience the effects of the echo baby bust of the 1990s. From the 1950s to the 1970s, a dramatic downsizing of the family unit occurred. A direct result was the declining school enrollment of the 1970s and 1980s. As of the 2000 Census, the size of a family was at an all-time low of 3.14 persons. According to the American Community Survey 2006 Estimate,

## Willoughby – Eastlake City School District

When projecting future enrollments, it will be vital to track the number of live births, the amount of new housing activity, and the change in household composition.

In addition, any of the following factors could cause a significant change in projected student enrollments:

- ▶ Boundary adjustments
- ▶ New school openings
- ▶ Changes/additions in program offerings
- ▶ Preschool programs
- ▶ Change in grade configuration
- ▶ Interest rates/unemployment shifts
- ▶ Magnet/Charter/Private school opening or closure
- ▶ Zoning changes
- ▶ Unplanned new housing activity
- ▶ Planned, but not built, housing

Obviously, certain factors can be gauged and planned for far better than others. For instance, it may be relatively straightforward to gather housing data from local builders regarding the total number of lots in a planned subdivision and calculate the potential student yield. However, planning for changes in the unemployment rate, and how these may either boost or reduce public school enrollment, proves more difficult. In any case, it is essential to gather a wide variety of information in preparation for producing enrollment projections.

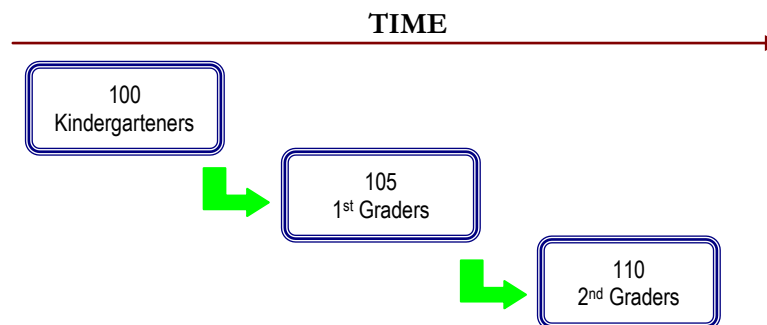
When looking ahead at a school district's enrollment over the next two, five, or ten years, it is helpful to approach the process from a global perspective. For example: How many new homes have been constructed each year? How many births have occurred each year in relation to the resident population? Is housing experiencing a turnover – if so, what is the composition of families moving in/out? Are more or less students attending private school or being home-schooled? What has the unemployment rate trend been over the past ten years? What new educational policies are in place now that could affect student enrollment figures?

The data sets generated from questions such as these have led to the development of general methodologies to project future student enrollments. They are as follows:

## Willoughby – Eastlake City School District

**Cohort Survival Method**

A cohort is a group of persons [in this case, students]. The cohort survival projection methodology uses previous live birth data and historical student enrollments to “age” a known population or cohort throughout the school grades. For instance, a cohort begins when a group of kindergarteners enrolls in grade K and moves to first grade the following year, second grade the next year, and so on.



A “survival ratio” is developed to track how this group of students grew or shrunk in number as they moved through the grade levels. By determining survival ratios for each grade transition [i.e., 1st to 2nd grade] over a ten-year period of time, patterns emerge and projection ratios can be developed to be used as a multiplier.

For example, if student enrollment has consistently increased from the 8th to the 9th grade over the past ten years, the survival ratios for each year would be greater than 100 percent. Through analysis of the survival ratios, the projection ratio is determined and is multiplied by the current 8th grade to develop a projection for next year’s 9th grade.

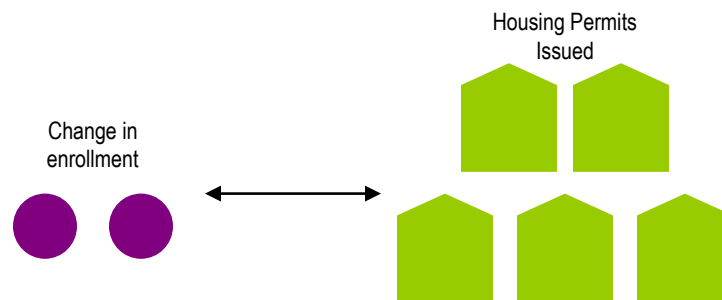
This methodology can be carried through to develop ten years of projection figures. Because there is not a grade cohort to follow for students coming into kindergarten, live birth counts are used to develop a survival ratio. Babies born five years previous to the kindergarten class are compared in number, and a ratio can be developed to project future kindergarten enrollments.

The cohort survival method is useful in areas where population is stable [relatively flat, growing steadily, or declining steadily], and where there have been no significant fluctuations in enrollment, births, and housing patterns from year to year.

## Willoughby – Eastlake City School District

### Housing

Enrollment projections can also be determined by analyzing the housing data for the areas that make up a school district. Yield factors can be established by comparing the historic change in enrollment from year to year divided by the total number of building or occupancy permits issued. For example, if student enrollment has increased by approximately 100 students each year and approximately 200 building permits have been issued each year for the past ten years, then the yield factor would be approximately .5 students per building permit.



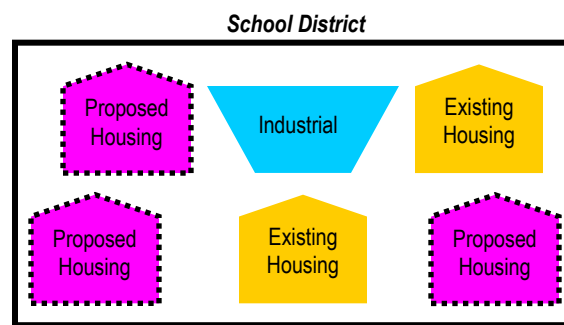
Once yield factors are established, the number of new students per year can be estimated by multiplying the yield factor by the number of projected new housing units. This method is effective when the rate of kindergarten enrollment far exceeds the live birth counts.

If housing demolitions are occurring in a district, these must also be taken into account. For instance, if housing demolitions/withdrawals have increased rapidly over recent years while new housing starts have remained relatively constant over many years, the conclusion may be that some of the new housing starts will simply be replacements for the families displaced by the demolitions. Of course, housing value and household composition would need to be further analyzed to confirm that this is indeed the case. It is possible that enrollment may remain flat or decline even though there is new housing occurring in the area.

## Willoughby – Eastlake City School District

### Land-Saturation Analysis

Housing data also drives the land-saturation analysis enrollment methodology. In areas where there is a high rate of development and the future development patterns in the area are clear, a “build-out” scenario can be developed. The scenario takes into consideration the remaining acreage to be developed, planned rate of completion, zoning policies, density per acre, type of housing, and ratios of school-age children per household type. This method is particularly useful in areas experiencing rapid growth.



### Geographic Information Systems

While not a methodology, the need for better tools and easier manipulation of data has led to a new industry standard in planning – GIS [Geographic Information Systems]. GIS technology allows school districts to quickly analyze countless data sets including birth data, housing information, and enrollment statistics.

When paired with enrollment projections, GIS becomes an invaluable information-management and decision-making tool. Often, county or city offices are already implementing GIS technology and data can be shared and expanded among these organizations in the district. GIS tables and maps are included within this report illustrating population, age, and income estimates and projections.

The cohort survival was the primary method used in the development of the enrollment projections for the Willoughby – Eastlake City School District.

## Willoughby – Eastlake City School District

### HISTORICAL ENROLLMENT

Over the past ten years, student enrollment in the Willoughby – Eastlake City School District has decreased by 288 students in grades Pre-K – 12, including ungraded and career technical students. Total enrollment for the 2009-10 school year is 8,698 students.

The approximate percentages of mainstreamed special education students [Pre-K – 12] for the current school year are as follows:

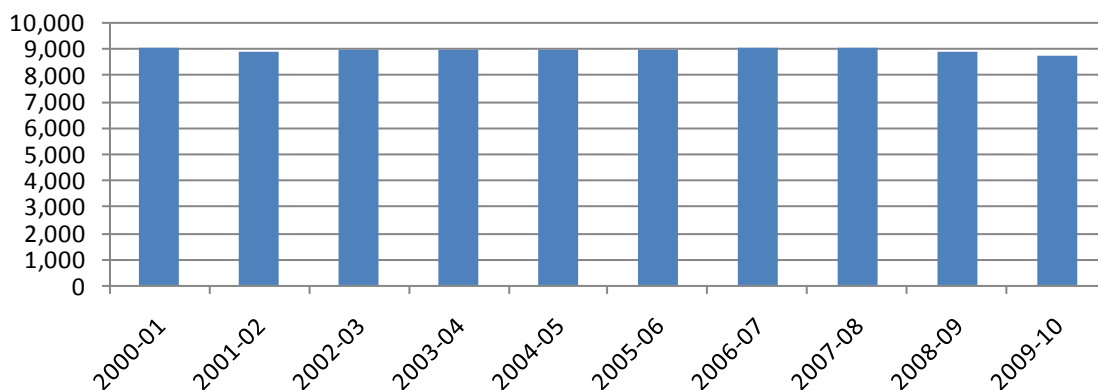
- Pre-K – 41%
- K-5 – 3%
- 6-8 – 4%
- 9-12 – 4%

The approximate percentages of self-contained special education students [Pre-K – 12] for the current school year are as follows:

- Pre-K – 0%
- K-5 – 1%
- 6-8 – 2%
- 9-12 – 2%

The following graph illustrates the District's Pre-K – 12 enrollment history from 2000-01 through 2009-10.

**Willoughby - Eastlake City School District  
Historical Enrollment**





## Willoughby – Eastlake City School District

The following table illustrates the District's enrollment history from 2000-01 through 2009-10.

Willoughby - Eastlake City School District										
Historical Enrollment										
Grade	2000-01	2001-02	2002-03	2003-04	2004-05	2005-06	2006-07	2007-08	2008-09	2009-10
Pre-K (regular)*	62	62	63	64	63	63	62	67	75	71
Pre-K (ECE)	20	20	21	20	24	21	20	23	27	19
Pre-K (special needs)	56	45	57	73	66	53	60	62	63	62
K	544	594	595	566	523	584	618	574	540	559
1	622	543	645	642	624	587	601	656	593	549
2	657	586	526	639	662	622	587	594	629	570
3	654	654	607	554	644	666	615	599	595	629
4	710	670	664	608	565	649	658	606	613	601
5	698	715	668	680	633	571	653	668	637	618
6	681	703	719	690	681	663	612	681	685	666
7	668	703	727	742	693	705	672	621	680	687
8	677	666	697	738	758	695	706	669	617	678
9	781	802	761	774	806	837	750	730	743	642
10	752	713	736	718	712	777	843	785	710	739
11	664	724	694	694	695	673	693	789	731	672
12	701	641	725	704	671	649	629	652	738	694
<b>Pre-K - 12 Total</b>	<b>8,947</b>	<b>8,841</b>	<b>8,905</b>	<b>8,906</b>	<b>8,820</b>	<b>8,815</b>	<b>8,779</b>	<b>8,776</b>	<b>8,676</b>	<b>8,456</b>
Ungraded	39	48	0	1	2	5	2	0	0	19
Career Tech Comprehensive - Low Bay	0	0	0	0	53	53	48	50	56	48
Career Tech Comprehensive - High Bay	0	0	0	0	49	47	63	53	51	56
Career Tech Off-Site	0	0	0	0	0	0	86	95	96	109
Career Tech On-Site - Low Bay	0	0	0	0	2	0	3	4	7	10
<b>Grand Total</b>	<b>8,986</b>	<b>8,889</b>	<b>8,905</b>	<b>8,907</b>	<b>8,926</b>	<b>8,920</b>	<b>8,981</b>	<b>8,978</b>	<b>8,886</b>	<b>8,698</b>

Source: Ohio Department of Education, EMIS; Willoughby - Eastlake City School District

Willoughby - Eastlake City School District										
Historical Enrollment by Grade Group										
Grade	2000-01	2001-02	2002-03	2003-04	2004-05	2005-06	2006-07	2007-08	2008-09	2009-10
Pre-K (ECE, special needs) - 5	3,961	3,827	3,783	3,782	3,741	3,753	3,812	3,782	3,697	3,607
6 - 8	2,026	2,072	2,143	2,170	2,132	2,063	1,990	1,971	1,982	2,031
9 - 12	2,898	2,880	2,916	2,890	2,884	2,936	2,915	2,956	2,922	2,747
<b>Pre-K - 12 Total</b>	<b>8,885</b>	<b>8,779</b>	<b>8,842</b>	<b>8,842</b>	<b>8,757</b>	<b>8,752</b>	<b>8,717</b>	<b>8,709</b>	<b>8,601</b>	<b>8,385</b>
Ungraded	39	48	0	1	2	5	2	0	0	19
Career Tech Comprehensive - Low Bay	0	0	0	0	53	53	48	50	56	48
Career Tech Comprehensive - High Bay	0	0	0	0	49	47	63	53	51	56
Career Tech Off-Site	0	0	0	0	0	0	86	95	96	109
Career Tech On-Site - Low Bay	0	0	0	0	2	0	3	4	7	10
<b>Grand Total</b>	<b>8,924</b>	<b>8,827</b>	<b>8,842</b>	<b>8,843</b>	<b>8,863</b>	<b>8,857</b>	<b>8,919</b>	<b>8,911</b>	<b>8,811</b>	<b>8,627</b>

Source: Ohio Department of Education, EMIS; Willoughby - Eastlake City School District

\*regular Pre-K enrollment is not included in the projected enrollment figures.

## Willoughby – Eastlake City School District

### COMMUNITY SCHOOL ENROLLMENT

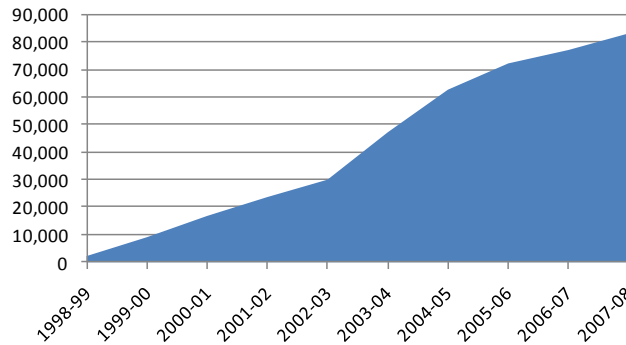
In Ohio, community school enrollment has increased dramatically over the last decade. From 1998-99 to 2007-08, enrollment has increased from 2,244 students in 15 community schools to 82,952 students in 325 community schools.

**Ohio  
Community School Enrollment**

Grade	1998-99	1999-00	2000-01	2001-02	2002-03	2003-04	2004-05	2005-06	2006-07	2007-08
Grand Total	2,244	9,075	16,784	23,626	29,939	47,101	62,561	72,064	76,932	82,952

Source: Ohio Department of Education

**Ohio Community School Enrollment**

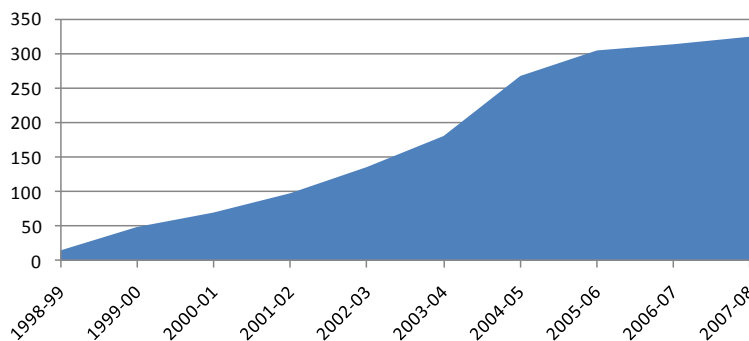


**Ohio  
Number of Community Schools**

Grade	1998-99	1999-00	2000-01	2001-02	2002-03	2003-04	2004-05	2005-06	2006-07	2007-08
Grand Total	15	49	70	98	136	181	268	305	314	325

Source: Ohio Department of Education

**Number of Community Schools in Ohio**



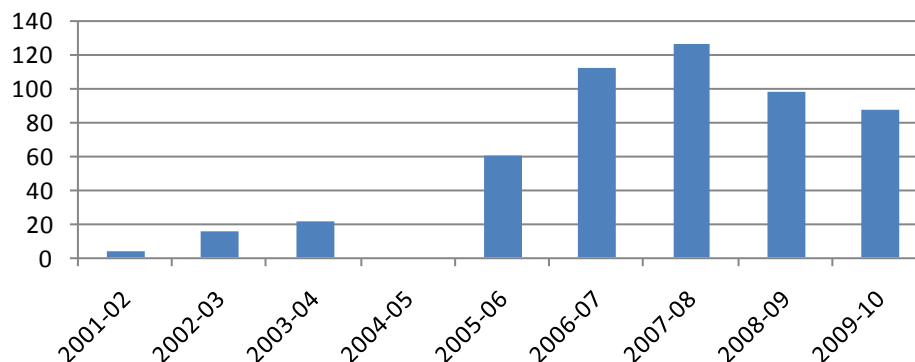
## Willoughby – Eastlake City School District

Since 2001-02, the number of Willoughby – Eastlake City School District students attending community schools has increased from 4 to 87 students. Enrollment of Willoughby – Eastlake City School District students attending community schools should be closely monitored as it may have a significant impact on District enrollment in the future.

Willoughby - Eastlake City School District									
Community School Enrollment									
Grade	2001-02	2002-03	2003-04	2004-05	2005-06	2006-07	2007-08	2008-09	2009-10
Pre-K	0	0	0	0	0	0	0	0	0
K	0	2	1	0	3	6	10	3	7
1	0	0	0	0	3	1	2	5	3
2	0	0	0	0	4	2	3	3	4
3	0	1	0	0	2	2	3	3	2
4	0	1	0	0	1	1	4	3	1
5	0	1	0	0	0	4	1	6	1
6	0	0	0	0	1	3	3	0	5
7	0	0	1	0	3	3	7	4	4
8	1	0	1	0	2	8	5	5	7
9	0	1	1	0	7	18	25	17	10
10	2	7	9	0	9	33	22	17	8
11	1	2	7	0	12	19	21	15	13
12	0	0	1	0	11	5	10	8	12
Ungraded	0	0	0	0	2	7	10	9	10
<b>Grand Total</b>	<b>4</b>	<b>15</b>	<b>21</b>	<b>0</b>	<b>60</b>	<b>112</b>	<b>126</b>	<b>98</b>	<b>87</b>

Source: Ohio Department of Education, EMIS; Willoughby - Eastlake City School District

### Willoughby - Eastlake City School District Students Attending Community Schools



## Willoughby – Eastlake City School District

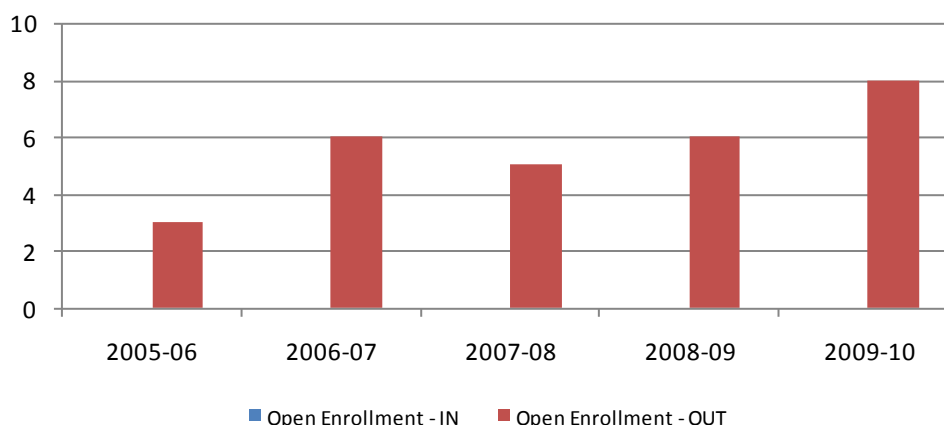
### OPEN ENROLLMENT

Since 2005-06, the number of Willoughby – Eastlake City School District students “open enrolling” out of the District has increased from 3 to 8 students in the 2009-10 school year. There have not been any students “open enrolling” into the District during this time. Significant changes in the number of students “open enrolling” into or out of the District from year to year can impact enrollment projections and should be monitored.

Willoughby - Eastlake City School District					
Open Enrollment - OUT					
Grade	2005-06	2006-07	2007-08	2008-09	2009-10
Pre-K	0	0	0	0	0
K	0	1	0	0	1
1	2	1	1	1	0
2	1	1	1	0	1
3	0	1	0	0	0
4	0	0	0	0	0
5	0	0	0	0	0
6	0	0	1	0	0
7	0	0	0	1	0
8	0	0	1	0	1
9	0	0	0	1	1
10	0	1	0	1	2
11	0	1	1	1	1
12	0	0	0	1	1
Ungraded	0	0	0	0	0
<b>Grand Total</b>	<b>3</b>	<b>6</b>	<b>5</b>	<b>6</b>	<b>8</b>

Source: Ohio Department of Education, EMIS; Willoughby - Eastlake City School District

### Willoughby - Eastlake City School District Open Enrollment



## Willoughby – Eastlake City School District

### LIVE BIRTH DATA

Utilization of live birth data is recommended when projecting future kindergarten enrollments as it provides a helpful overall trend. The live birth counts are used in determining a birth-to-kindergarten survival ratio. This ratio identifies the percentage of children born in a representative area who attend kindergarten in the District five years later. The survival ratios for birth-to-kindergarten as well as grades 1-12 can be found later in this report.

The Ohio Department of Health [ODH] data warehouse provides information about live birth events for Ohio residents. Information about events occurring outside of Ohio to Ohio residents is included. Information about events occurring inside Ohio to non-Ohio residents is not included.

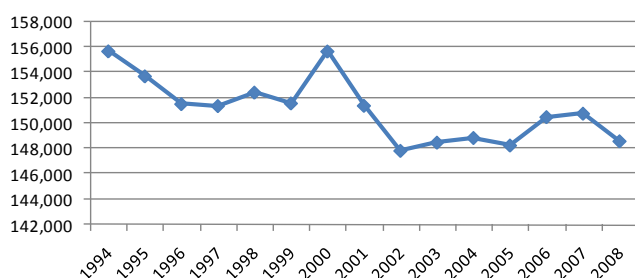
Data is arranged by the residence of the mother. For example, if a mother lives in Powell, Delaware County but delivers her baby in Columbus, Franklin County, the birth is counted in Powell, Delaware County.

The number of live births is recorded by:

- ▶ State
- ▶ County
- ▶ City/Town
- ▶ Census Tract
- ▶ Zip Code
- ▶ Address [not available to the public]

Live birth counts are different from live birth rates. The live birth count is the actual number of live births. A birth rate is the number of births per 1,000 women in a specified population group. Birth rates are provided for counties only and for 9 age groups from 10-14 years to 45+ years.

**Ohio Live Birth Counts**



Ohio has experienced the same trend in live births as seen around the country. Live birth counts increased for the first time in several years in 1998 and again in 2000. However, a descending pattern resumed in 2001 and reached an all-time low of 147,832 in 2002.

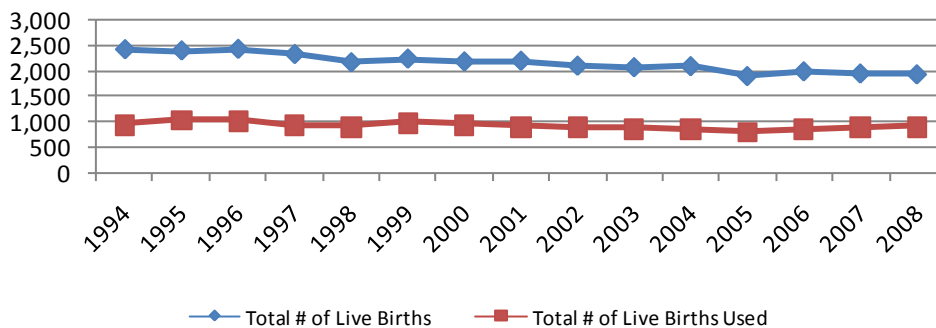
## Willoughby – Eastlake City School District

The following chart and graph include the live birth count for zip codes 44026, 44040, 44060, 44092, 44094, 44095, 44132, and 44143. However, upon analysis of the map on page 14, only zip codes 44092, 44094, and 44095 were used for projection purposes.

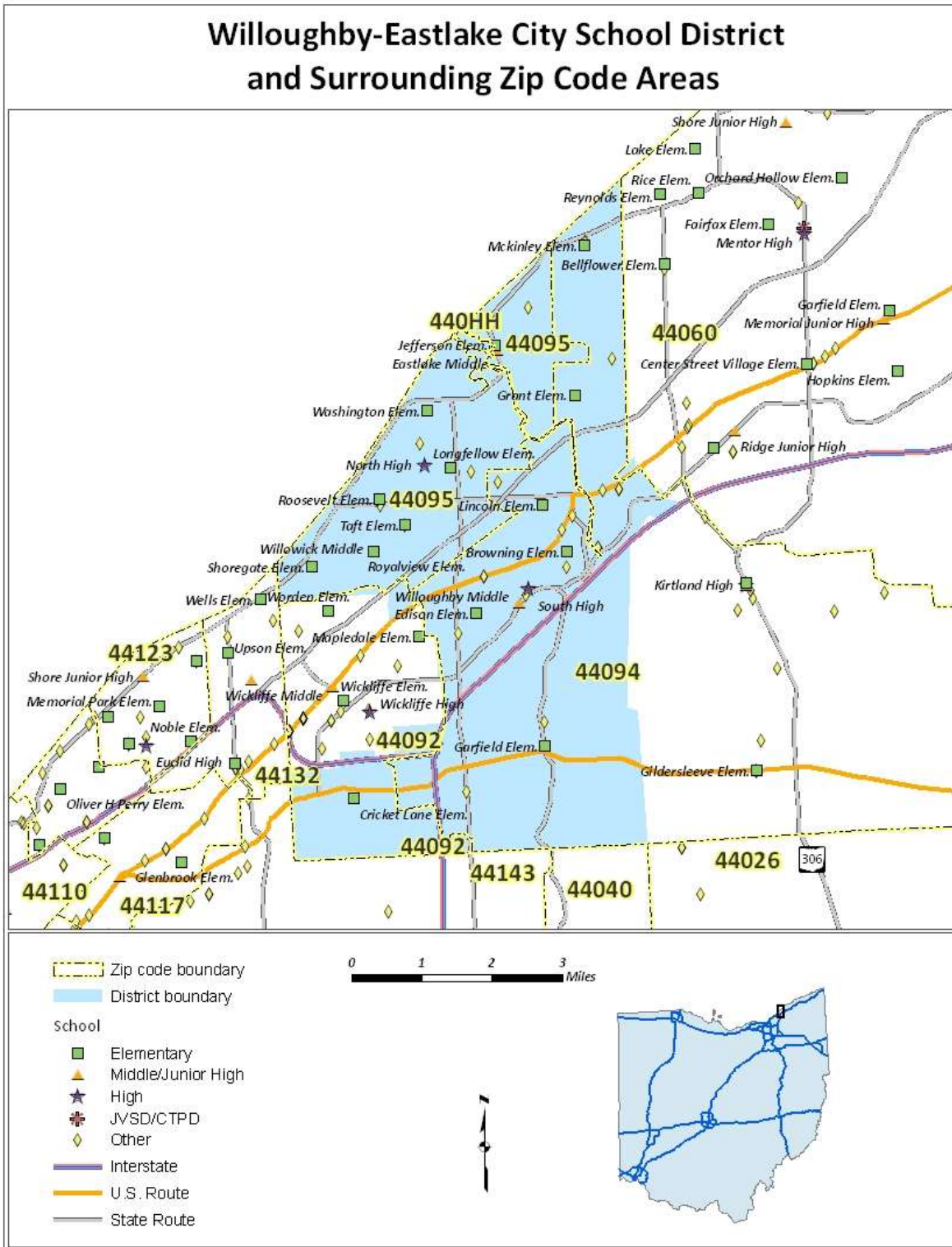
Willoughby - Eastlake City School District										
Live Birth Count by Zip Code										
1994-2008										
Year	44026	44040	44060	44092	44094	44095	44132	44143	Total # of Live Births	Total # of Live Births Used
1994	149	25	828	179	368	394	244	233	2,420	941
1995	123	24	748	193	427	408	261	212	2,396	1,028
1996	130	30	758	190	414	420	257	228	2,427	1,024
1997	109	24	770	171	370	397	275	209	2,325	938
1998	77	21	700	180	366	358	246	215	2,163	904
1999	92	29	693	204	366	408	221	222	2,235	978
2000	98	23	671	175	360	412	227	213	2,179	947
2001	85	20	716	187	341	381	235	227	2,192	909
2002	86	17	653	178	334	386	212	229	2,095	898
2003	85	15	631	203	313	351	240	227	2,065	867
2004	86	15	649	202	326	330	240	237	2,085	858
2005	86	11	577	180	281	351	216	188	1,890	812
2006	72	14	603	184	332	343	216	220	1,984	859
2007	61	16	561	201	343	350	213	196	1,941	894
2008	52	13	553	202	310	393	207	194	1,924	905

Source: Ohio Department of Health, Statistical Analysis Unit

Willoughby - Eastlake City School District  
Live Birth Count by Zip Code



Willoughby – Eastlake City School District



## Willoughby – Eastlake City School District

### DEMOGRAPHICS

The Willoughby – Eastlake City School District is comprised of Eastlake City, Lakeline Village, Timberlake Village, Waite Hill Village, Willoughby City, Willoughby Hills City, and Willowick City in Lake County. General demographic data is included in the following tables for the areas located completely or partially in the District.

General Demographic Information	
	Lake County
Per Capita Income (2008)	\$28,505
Median Household Income (2008)	\$58,536
Persons Below Poverty (2008)	8.8%

Source: US Census

Total Population		
	2000 Census	2008 Estimate
Lake County	227,511	234,030
Eastlake City	20,255	19,520
Lakeline Village	165	162
Timberlake Village	775	735
Waite Hill Village	446	553
Willoughby City	22,621	22,561
Willoughby Hills City	8,595	8,540
Willowick City	14,361	13,727

Source: ODOD Office of Strategic Research

Also included are block group estimates and projections provided by ESRI Business Information Solutions (ESRI BIS). ESRI BIS uses a time series of estimates from the U.S. Census Bureau that includes the latest estimates and intercensal estimates adjusted for error of closure. The Census Bureau's time series is consistent, but testing has revealed improved accuracy by using a variety of sources to track county population trends.

ESRI BIS also employs a time series of building permits and housing starts plus residential deliveries. Finally, local data sources that tested well against Census 2000 are reviewed. Data sources are integrated and then analyzed by Census Block Groups.

Sources of data include:

- ▶ Supplementary Surveys of the Census Bureau
- ▶ Bureau of Labor Statistics' (BLS) Local Area Unemployment Statistics
- ▶ BLS Occupational Employment Statistics
- ▶ InfoUSA
- ▶ U.S. Bureau of the Census' Current Population Survey
- ▶ National Planning Association Data Service



## Willoughby – Eastlake City School District

Below is a list of definitions as they appear on the U.S. Census Bureau website, to aid in interpretation of the following tables and maps.

**Household:**

*A household includes all the people who occupy a housing unit as their usual place of residence.*

**Average family size:**

*A measure obtained by dividing the number of members of families by the total number of families (or family householders).*

**Family household (Family):**

*A family includes a householder and one or more people living in the same household who are related to the householder by birth, marriage, or adoption. All people who are related to the householder are regarded as members of his or her family. A family household may contain people not related to the householder, but those people are not included as part of the householder's family in census tabulations. Thus, the number of family households is equal to the number of families, but family households may include more members than do families. A household can contain only one family for purposes of census tabulations. Not all households contain families since a household may comprise a group of unrelated people or one person living alone.*

**Householder:**

*The person, or one of the people, in whose name the home is owned, being bought, or rented. If there is no such person present, any household member 15 years old and over can serve as the householder for the purposes of the census. Two types of householders are distinguished: a family householder and a nonfamily householder. A family householder is a householder living with one or more people related to him or her by birth, marriage, or adoption. The householder and all people in the household related to him are family members. A nonfamily householder is a householder living alone or with nonrelatives only.*

## Willoughby – Eastlake City School District

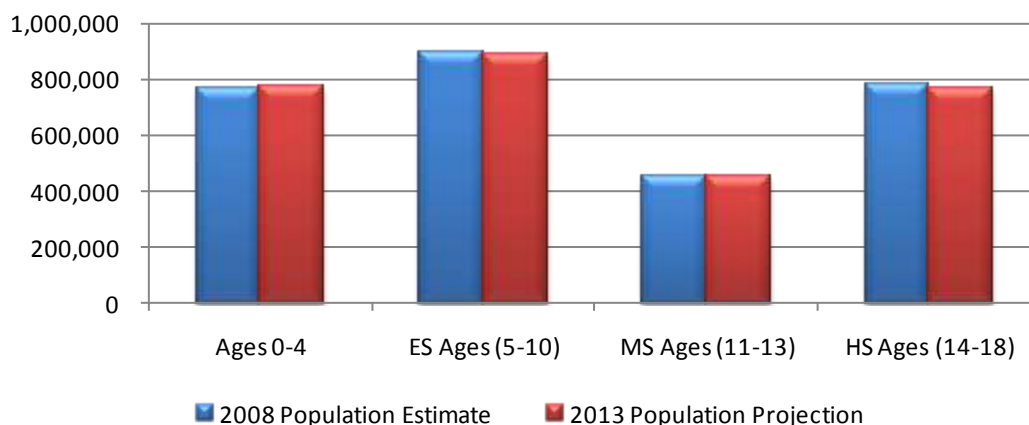
The following tables illustrate the current estimates and 5-year population projections based on block groups that comprise the state and school district, indicating areas of current and projected growth. The tables have been developed to determine selected age group projections and projections for household income, family size, and family income.

The total population in the State of Ohio is 11,633,295. This population is projected to increase by 172,505 people, or approximately 1.5% over a 5-year period. The 0-18 year-old population in the State currently totals 2,906,798. This population is projected to decrease by 25,847 children, or approximately 1 percent.

State of Ohio	2008 Population Estimate	2013 Population Projection
Total Population	11,633,295	11,805,800
Ages 0-4	769,833	777,570
ES Ages (5-10)	896,419	885,752
MS Ages (11-13)	456,657	450,953
HS Ages (14-18)	783,889	766,676
<b>Total Ages 0-18</b>	<b>2,906,798</b>	<b>2,880,951</b>
Average Age	37	38

Source: ESRI BIS

**State of Ohio  
Population Estimates & Projections by Age Group**

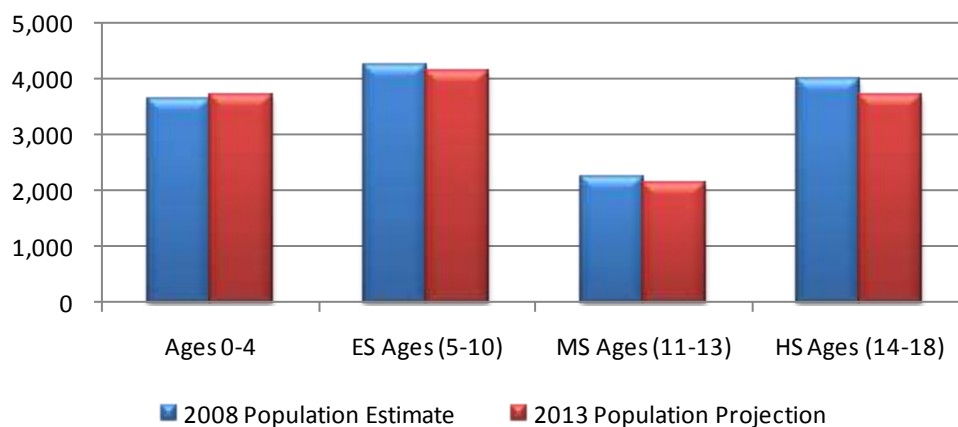


## Willoughby – Eastlake City School District

The total population in the District is 67,439. This population is projected to increase by 1,022 people, or approximately 2% over a 5-year period. The 0-18 year-old population in the District currently totals 14,080. This population is projected to decline by 368 children, or approximately 3 percent.

<b>Willoughby-Eastlake City School District</b>	<b>2008 Population Estimate</b>	<b>2013 Population Projection</b>
Total Population	67,439	68,461
Ages 0-4	3,631	3,706
ES Ages (5-10)	4,235	4,150
MS Ages (11-13)	2,238	2,141
HS Ages (14-18)	3,976	3,715
<b>Total Ages 0-18</b>	<b>14,080</b>	<b>13,712</b>
Average Age	40	41
Source: ESRI BIS		

**Willoughby-Eastlake City School District  
Population Estimates & Projections by Age Group**



## Willoughby – Eastlake City School District

Average household and family incomes in the State are projected to increase by 14% and 15%, respectively over a 5-year period. Average family size is projected to remain relatively the same.

<b>State of Ohio</b>	<b>2008 Population Estimate</b>	<b>2013 Population Projection</b>
Average Household Income	\$62,620	\$71,309
Average Family Size	3.05	3.04
Average Family Income	\$68,403	\$78,571

Source: ESRI BIS

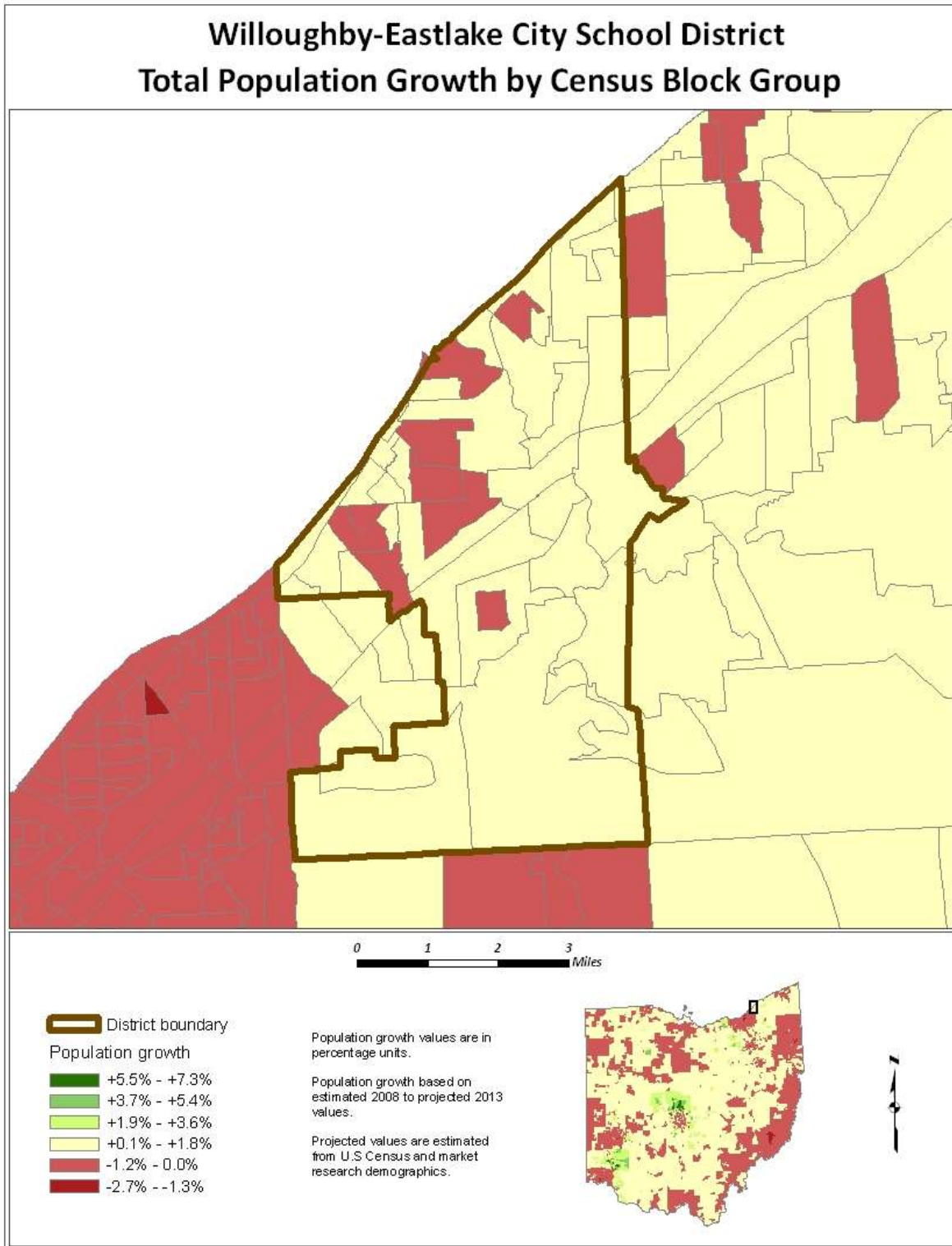
Average household and family incomes in the District are projected to increase by 13% and 11%, respectively over a 5-year period. Average family size is projected to remain the same.

<b>Willoughby-Eastlake City School District</b>	<b>2008 Population Estimate</b>	<b>2013 Population Projection</b>
Average Household Income	\$72,643	\$81,763
Average Family Size	2.88	2.88
Average Family Income	\$86,778	\$96,516

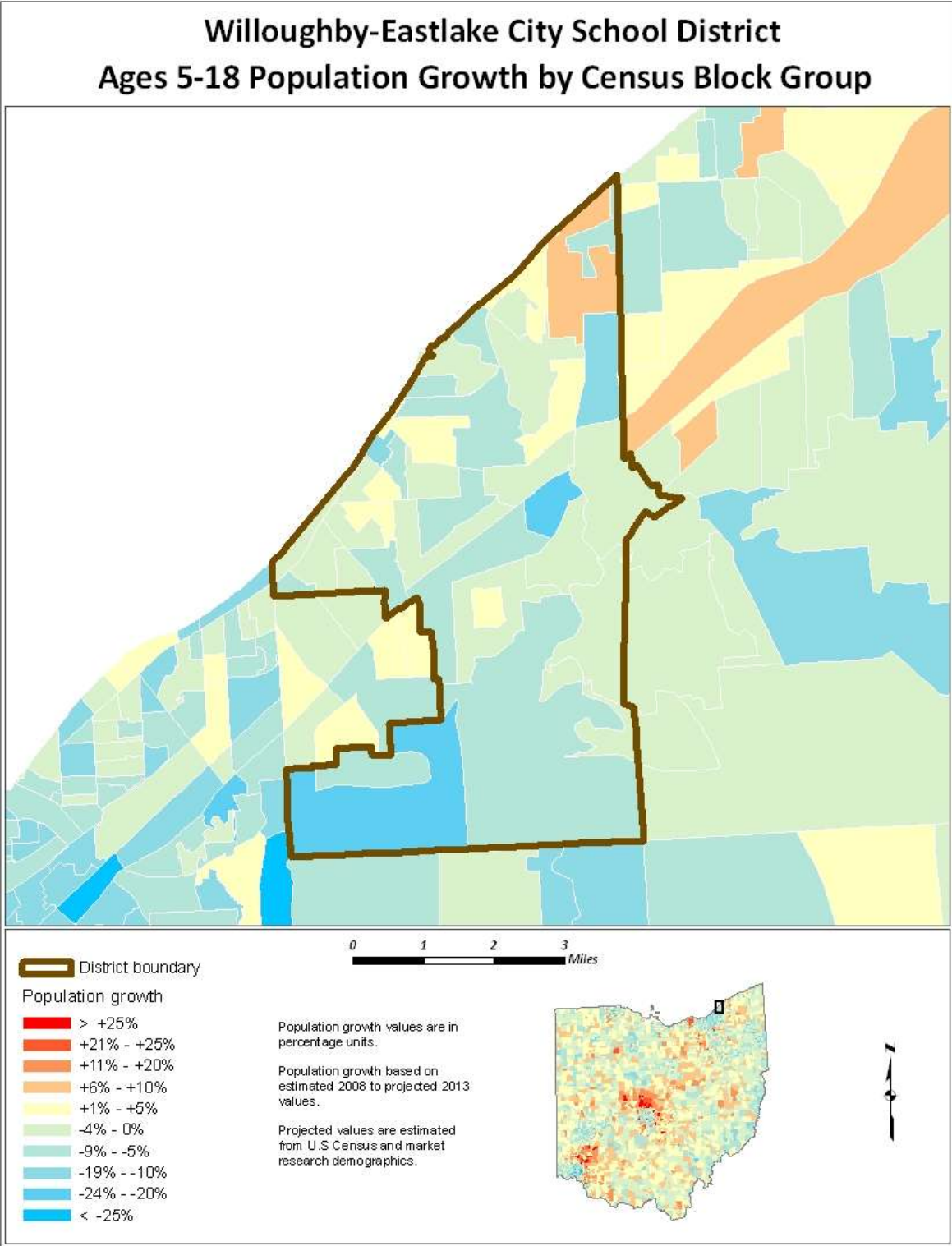
Source: ESRI BIS

The maps on the following pages illustrate the data identified in the tables. The color coding identifies areas within the District that may be increasing or decreasing at different rates than others.

Willoughby – Eastlake City School District

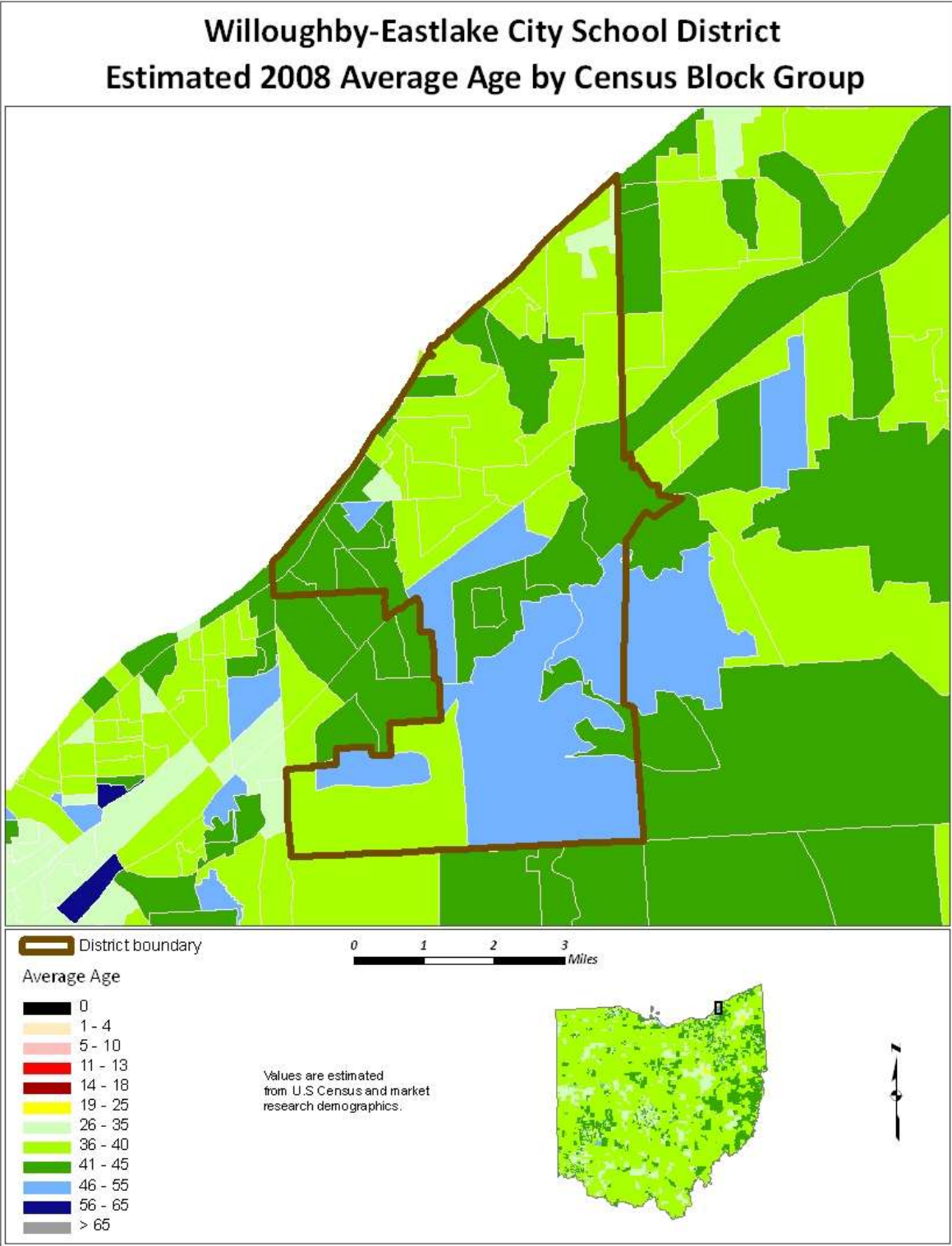


Willoughby – Eastlake City School District

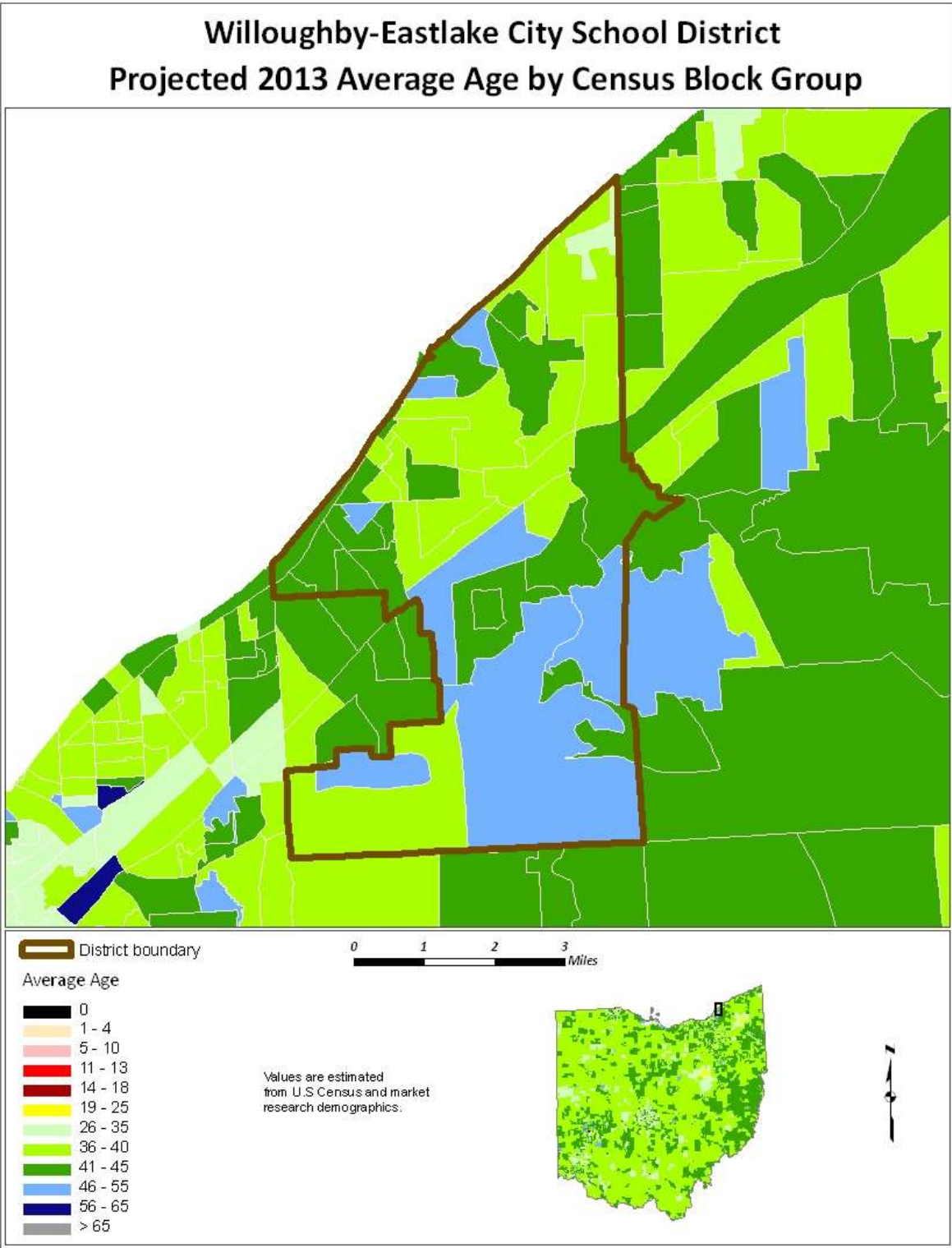




Willoughby – Eastlake City School District

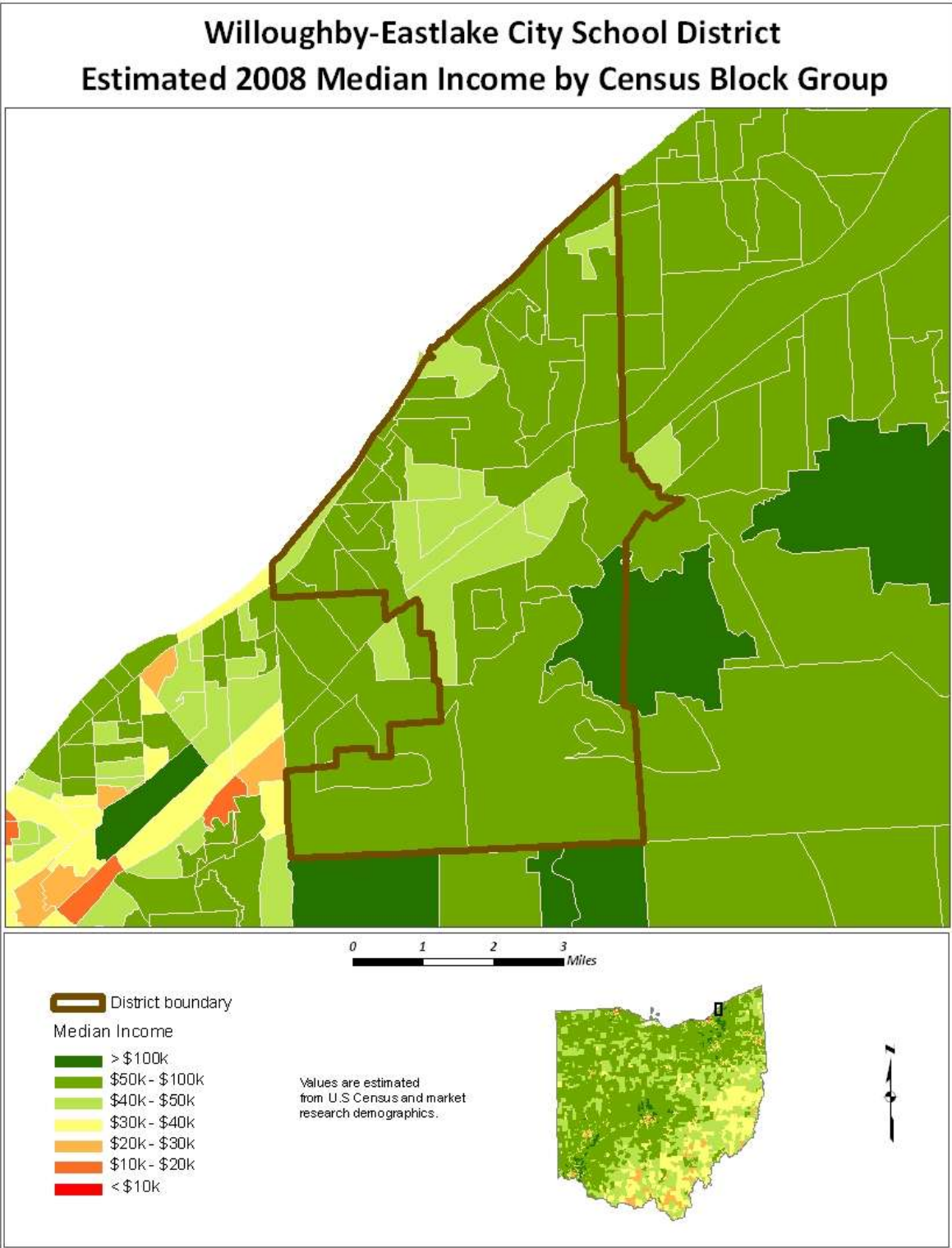


Willoughby – Eastlake City School District

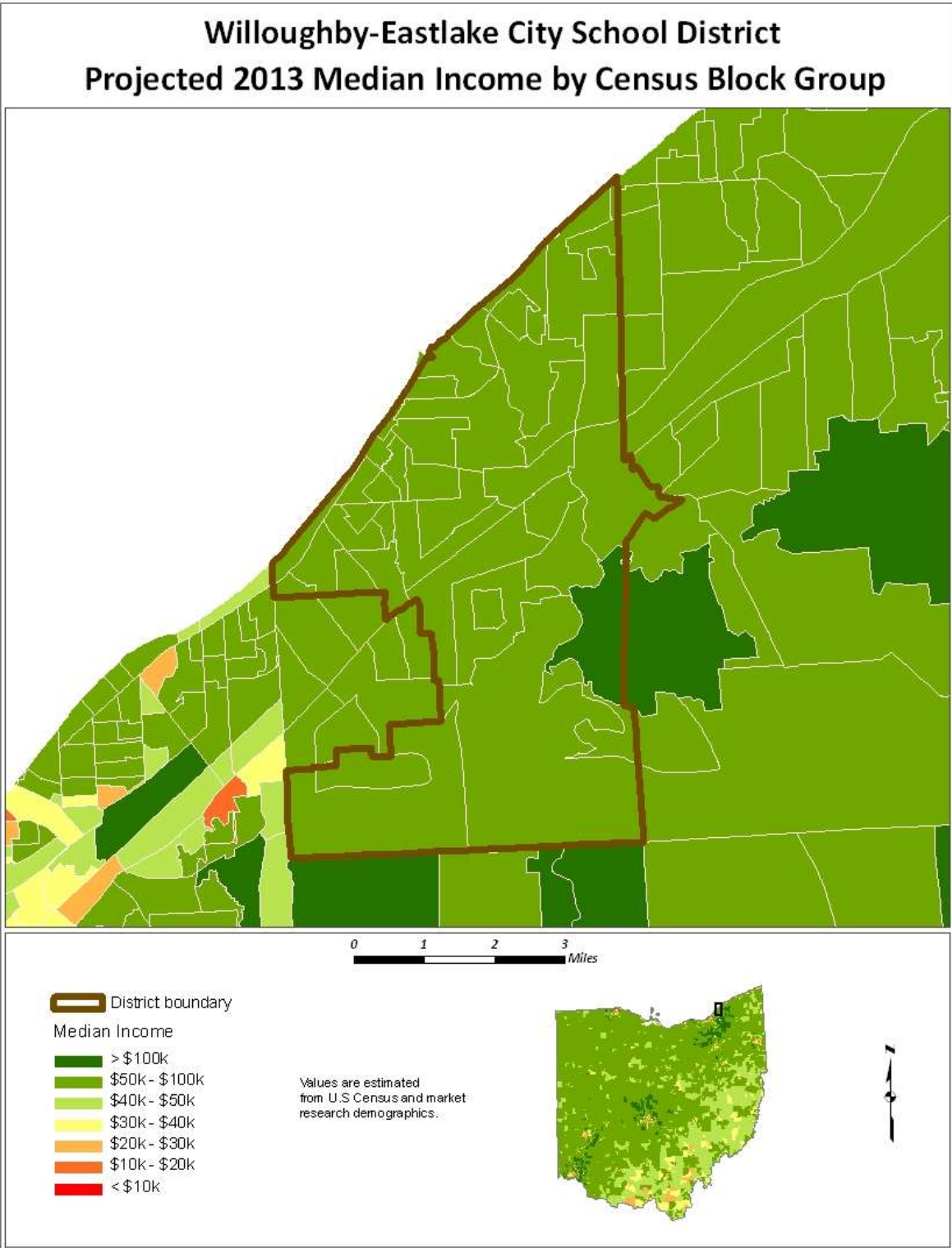




Willoughby – Eastlake City School District



Willoughby – Eastlake City School District



## Willoughby – Eastlake City School District

### HOUSING INFORMATION

The chart below illustrates the number of single-family dwelling building permits issued each year in Eastlake, Timberlake Village, Willoughby, Willoughby Hills, Willowick, and Lake County. The number of permits issued in Lake County has declined dramatically since 2004 due to the downturn in the housing market.

<b># of Building Permits Issued for Single Family Dwellings</b>						
<b>Year</b>	<b>Eastlake</b>	<b>Timberlake Vill.</b>	<b>Willoughby</b>	<b>Willoughby Hills</b>	<b>Willowick</b>	<b>Lake Co.</b>
1998	121	0	60	10	2	803
1999	54	0	52	12	3	746
2000	22	0	62	7	4	674
2001	32	0	42	13	0	773
2002	15	0	51	2	0	711
2003	13	0	63	16	0	844
2004	20	1	40	17	0	901
2005	24	1	82	35	0	817
2006	26	0	107	85	0	810
2007	6	0	94	12	11	514
2008	7	0	56	7	7	325
2009*	3	0	69	9	8	256

Source: SOCDs Building Permits Database

\*preliminary

According to information provided by the city of Willoughby, there is one proposed subdivision, Arbor Ridge, with 73 single family lots.

According to information provided by the city of Willoughby Hills, there is one planned subdivision, Maple Valley, with 18 single family lots.

According to information provided by the city of Willowick, there are two active subdivisions, Larmar and Shoreland Crossings.

## Willoughby – Eastlake City School District

### SURVIVAL RATIOS

The chart below demonstrates the changes in enrollment as students move through the system. Percentages greater than 100 indicate that there are more students than there were in the previous grade the previous year. In other words, there was growth and new students entered the system. Percentages less than 100 indicate that there was decline with students leaving the system.

- ▶ Birth to Kindergarten: This ratio indicates the number of children born in the area who attend kindergarten in the District 5 years later. Percentages less than 100% result from movement out of the district, attendance at a non-public or charter school, or residence in another district within the same area.
- ▶ Grades 8-9: The higher than usual percentage often is a result of school district promotion policies. Often in school districts, students are promoted from 8<sup>th</sup> to 9<sup>th</sup> grade and after one year in 9<sup>th</sup> grade do not have sufficient credits to be classified as 10<sup>th</sup> graders and are counted again as 9<sup>th</sup> graders the following year. There may also be students who attended private or charter schools or are home schooled through grade 8 and then attend public schools for high school education.

The following table illustrates the survival ratios used in developing the enrollment projections for the Willoughby – Eastlake City School District.

from	to	birth -> K	K->1	1->2	2->3	3->4	4->5	5->6	6->7	7->8	8->9	9->10	10->11	11->12
2000	2001	58.0%	99.8%	94.2%	99.5%	102.4%	100.7%	100.7%	103.2%	99.7%	118.5%	91.3%	96.3%	96.5%
2001	2002	63.4%	108.6%	96.9%	103.6%	101.5%	99.7%	100.6%	103.4%	99.1%	114.3%	91.8%	97.3%	100.1%
2002	2003	62.6%	107.9%	99.1%	105.3%	100.2%	102.4%	103.3%	103.2%	101.5%	111.0%	94.3%	94.3%	101.4%
2003	2004	53.5%	110.2%	103.1%	100.8%	102.0%	104.1%	100.1%	100.4%	102.2%	109.2%	92.0%	102.8%	105.2%
2004	2005	61.7%	112.2%	99.7%	100.6%	100.8%	101.1%	104.7%	103.5%	100.3%	110.4%	96.4%	99.6%	96.6%
2005	2006	68.0%	102.9%	100.0%	98.9%	98.8%	100.6%	107.2%	101.4%	100.1%	107.9%	100.7%	101.2%	103.4%
2006	2007	63.9%	106.1%	98.8%	102.0%	98.5%	101.5%	104.3%	101.5%	99.6%	103.4%	104.7%	104.3%	96.7%
2007	2008	62.3%	103.3%	95.9%	100.2%	102.3%	105.1%	102.5%	99.9%	99.4%	111.1%	97.3%	104.8%	96.6%
2008	2009	65.2%	101.7%	96.1%	100.0%	101.0%	100.8%	104.6%	100.3%	99.7%	104.1%	99.5%	109.0%	97.8%
	average	62.06%	105.869%	98.20%	101.2%	100.84%	101.8%	103.1%	101.9%	100.2%	109.982%	96.434%	101.061%	99.377%
	standard deviation	3.953%	3.957%	2.541%	1.960%	1.357%	1.677%	2.213%	1.405%	0.960%	4.424%	4.324%	4.417%	3.124%

## Willoughby – Eastlake City School District

### ENROLLMENT PROJECTION

Enrollment projections were developed after analyzing the data collected in this report. The projections indicate a decrease of 585 students in grades Pre-K through 12, not including regular Pre-K students, from the 2009-10 to the 2019-20 school year. The following tables and graph illustrate projected enrollments by grade and by grade group through the 2019-20 school year.

#### Preschool:

The Ohio School Design Manual [OSDM] provides space for preschool students with disabilities and a maximum of 40 ECE preschool students. The Willoughby – Eastlake City School District funds preschool through the following sources:

- General fund
- ECE entitlement
- Tuition
- Preschool special ed. unit funding

#### Kindergarten:

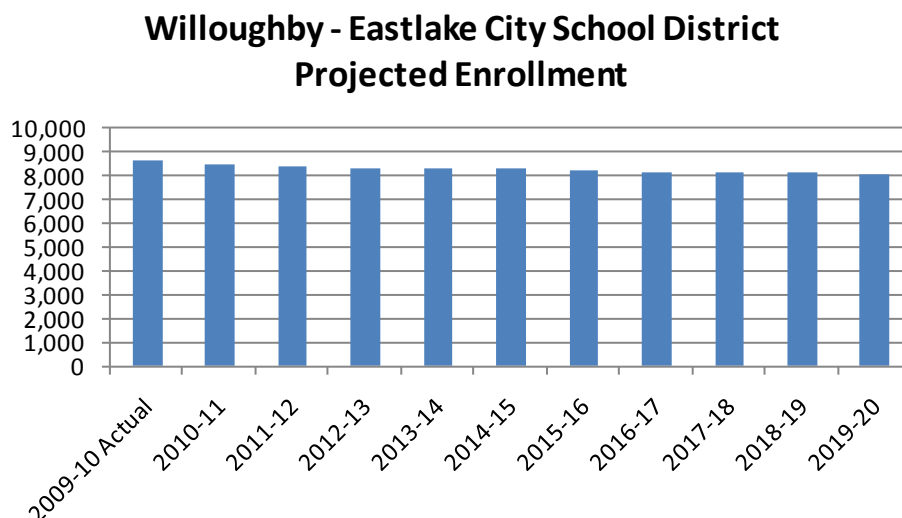
The OSDM provides space for all day, every day kindergarten.

#### JVS:

Full-time JVS students are not included in the projected enrollment figures. These students are counted at the JVS district.

#### Career Technical:

Due to the specialized space requirements, career technical students are pulled out of the 11<sup>th</sup> and 12<sup>th</sup> grade enrollments and projected separately.



## Willoughby – Eastlake City School District

Willoughby - Eastlake City School District											
Projected Enrollment											
Grade	2009-10 Actual	2010-11	2011-12	2012-13	2013-14	2014-15	2015-16	2016-17	2017-18	2018-19	2019-20
Pre-K (ECE)	19	19	19	19	19	19	19	19	19	19	19
Pre-K (special needs)	62	60	63	66	67	65	65	65	65	65	65
K	559	522	552	574	581	563	563	563	563	563	563
1	549	580	541	572	595	603	584	584	584	584	584
2	570	537	567	528	559	582	589	571	571	571	571
3	629	574	541	571	532	563	586	593	575	575	575
4	601	636	581	547	577	538	569	592	599	581	581
5	618	617	652	595	560	591	551	583	607	614	596
6	666	643	640	678	618	582	614	573	606	631	638
7	687	671	647	645	682	623	586	619	577	610	635
8	678	686	670	646	644	681	621	585	617	576	609
9	642	729	737	719	693	691	731	667	628	663	618
10	739	627	711	719	702	677	675	714	652	613	647
11	672	692	586	665	674	657	634	631	668	611	573
12	694	654	661	561	636	643	628	605	604	638	582
Pre-K - 12 Total	8,385	8,247	8,168	8,105	8,139	8,078	8,015	7,964	7,935	7,914	7,856
Ungraded	19	7	7	7	7	7	7	7	6	6	6
Career Tech Comprehensive - Low Bay	48	49	48	43	48	48	47	46	46	47	44
Career Tech Comprehensive - High Bay	56	52	49	48	51	50	48	48	49	48	45
Career Tech Off-Site	109	96	89	88	93	93	90	88	91	88	83
Career Tech On-Site - Low Bay	10	9	9	9	9	9	9	8	8	8	8
Grand Total	8,627	8,460	8,370	8,300	8,347	8,285	8,216	8,161	8,135	8,111	8,042

Source: DeJONG-HEALY

Willoughby - Eastlake City School District											
Projected Enrollment by Grade Group											
Grade	2009-10 Actual	2010-11	2011-12	2012-13	2013-14	2014-15	2015-16	2016-17	2017-18	2018-19	2019-20
Pre-K (ECE, special needs) - 5	3,607	3,545	3,516	3,472	3,490	3,524	3,526	3,570	3,583	3,572	3,554
6 - 8	2,031	2,000	1,957	1,969	1,944	1,886	1,821	1,777	1,800	1,817	1,882
9 - 12	2,747	2,702	2,695	2,664	2,705	2,668	2,668	2,617	2,552	2,525	2,420
Pre-K - 12 Total	8,385	8,247	8,168	8,105	8,139	8,078	8,015	7,964	7,935	7,914	7,856
Ungraded	19	7	7	7	7	7	7	7	6	6	6
Career Tech Comprehensive - Low Bay	48	49	48	43	48	48	47	46	46	47	44
Career Tech Comprehensive - High Bay	56	52	49	48	51	50	48	48	49	48	45
Career Tech Off-Site	109	96	89	88	93	93	90	88	91	88	83
Career Tech On-Site - Low Bay	10	9	9	9	9	9	9	8	8	8	8
Grand Total	8,627	8,460	8,370	8,300	8,347	8,285	8,216	8,161	8,135	8,111	8,042

Source: DeJONG-HEALY

The enrollment year used for master planning purposes is determined by whether the enrollment is projected to increase or decrease. In districts with increasing enrollment, the 2019-20 school year is used. In districts with declining enrollment, the 2014-15 school year is used.

Willoughby - Eastlake City School District	
Master Planning Year Projected Enrollment	
Grade	2014-15
Pre-K - 12 Total	8,078
Ungraded	7
Career Tech Comprehensive - Low Bay	48
Career Tech Comprehensive - High Bay	50
Career Tech Off-Site	93
Career Tech On-Site - Low Bay	9
Total	8,285

Source: DeJONG-HEALY

### CONCLUSION

---

As with any projection, the District should pay close attention to live birth counts, enrollment in elementary schools, community school enrollment, open enrollment, and any housing growth. Each of these factors will have an impact on future student enrollment.

**DeJONG-HEALY** is pleased to have had the opportunity to provide the District with enrollment projection services. We hope this document will provide the necessary information to make informed decisions about the future of the Willoughby – Eastlake City School District.

## APPENDIX

---

The following items were used to complete the enrollment projections report:

- District Questionnaire
- Housing Information
- July 2004 Enrollment Projection Report [available upon request]
- Acceptance



## OSFC Questionnaire - Willoughby-Eastlake City SD (45104)

**Contact Information:**

Superintendent Name: Dr. Keith M. Miller  
 Superintendent Email: Keith.Miller@WESchools.org  
 Superintendent Phone: (440) 975-3757  
 Contact Name (if different from Superintendent):  
 Contact Title:  
 Contact Email:  
 Contact Phone: ( ) -

**K-12 Enrollment**

Your district's 10-year District-wide enrollment numbers:

Grade	Enrolled 2000-01	Enrolled 2001-02	Enrolled 2002-03	Enrolled 2003-04	Enrolled 2004-05	Enrolled 2005-06	Enrolled 2006-07	Enrolled 2007-08	Enrolled 2008-09	Enrolled 2009-10
<b>K</b>	544	594	595	566	523	584	618	574	540	559
<b>1</b>	622	543	645	642	624	587	601	656	593	549
<b>2</b>	657	586	526	639	662	622	587	594	629	570
<b>3</b>	654	654	607	554	644	666	615	599	595	629
<b>4</b>	710	670	664	608	565	649	658	606	613	601
<b>5</b>	698	715	668	680	633	571	653	668	637	618
<b>6</b>	681	703	719	690	681	663	612	681	685	666
<b>7</b>	668	703	727	742	693	705	672	621	680	687
<b>8</b>	677	666	697	738	758	695	706	669	617	678
<b>9</b>	781	802	761	774	806	837	750	730	743	642
<b>10</b>	752	713	736	718	712	777	843	785	710	739
<b>11</b>	664	724	694	694	738	709	786	879	823	774
<b>12</b>	701	641	725	704	730	713	733	760	849	805
<b>Ungraded</b>	39	48	0	1	2	5	2	0	0	19
<b>Total:</b>	8848	8762	8764	8750	8771	8783	8836	8822	8714	8536

**All Day Kindergarten**

Your District offers kindergarten to all students, all day, every day.

**Preschool Enrollment**

Your Preschool funding sources are:

- General Fund
- Tuition
- ECE Entitlement
- Preschool special ed unit funding

ECE Enrollment:

Grade	Enrolled	Enrolled	Enrolled	Enrolled	Enrolled	Enrolled	Enrolled	Enrolled	Enrolled	Enrolled
-------	----------	----------	----------	----------	----------	----------	----------	----------	----------	----------

	2000-01	2001-02	2002-03	2003-04	2004-05	2005-06	2006-07	2007-08	2008-09	2009-10
<b>ECE</b>	20	20	21	20	24	21	20	23	27	19
<b>Total:</b>	20	20	21	20	24	21	20	23	27	19

You are the ECE grantee.

Pre-K students with disabilities:

Grade	Enrolled 2000-01	Enrolled 2001-02	Enrolled 2002-03	Enrolled 2003-04	Enrolled 2004-05	Enrolled 2005-06	Enrolled 2006-07	Enrolled 2007-08	Enrolled 2008-09	Enrolled 2009-10
<b>Pre-K with disabilities</b>	56	45	57	73	66	53	60	62	63	62
<b>Total:</b>	56	45	57	73	66	53	60	62	63	62

Other Pre-K enrollment:

Grade	Enrolled 2000-01	Enrolled 2001-02	Enrolled 2002-03	Enrolled 2003-04	Enrolled 2004-05	Enrolled 2005-06	Enrolled 2006-07	Enrolled 2007-08	Enrolled 2008-09	Enrolled 2009-10
<b>Pre-K Other (not disabled, not enrolled in ECE, or Federal Head Start)</b>	62	62	63	64	63	63	62	67	75	71
<b>Total:</b>	62	62	63	64	63	63	62	67	75	71

### Student to Teacher Ratio

Your average student to teacher ratios are:

- K-3: 21.0
- 4-5: 25.0
- 6-8: 28.0
- 9-12: 23.0

### Grade Configuration

Your district has the following grade configurations:

PK - 5  
6 - 8  
9 - 12  
Not Selected - Not Selected

### Students with Disabilities

The following is your District's students with disabilities by ODE program code and grade configuration.:

Code	Grades PK-5	Grades 6-8	Grades 9-12
<b>IE13</b>	87	61	98
<b>IE14</b>	16	14	17
<b>IE15</b>	41	32	43
<b>Total:</b>	144	107	158

Your District does not have any additional Students with Disabilities programs.

### Community Enrollment

Grade	Enrolled 2001-02	Enrolled 2002-03	Enrolled 2003-04	Enrolled 2004-05	Enrolled 2005-06	Enrolled 2006-07	Enrolled 2007-08	Enrolled 2008-09	Enrolled 2009-10
PK	0	0	0	0	0	0	0	0	0
K	0	2	1	0	3	6	10	3	7
1	0	0	0	0	3	1	2	5	3
2	0	0	0	0	4	2	3	3	4
3	0	1	0	0	2	2	3	3	2
4	0	1	0	0	1	1	4	3	1
5	0	1	0	0	0	4	1	6	1
6	0	0	0	0	1	3	3	0	5
7	0	0	1	0	3	3	7	4	4
8	1	0	1	0	2	8	5	5	7
9	0	1	1	0	7	18	25	17	10
10	2	7	9	0	9	33	22	17	8
11	1	2	7	0	12	19	21	15	13
12	0	0	1	0	11	5	10	8	12
Ungraded	0	0	0	0	2	7	10	9	10
<b>Total:</b>	4	15	21	0	60	112	126	98	87

### Open Enrollment

Your District's Open Enrollment(In) numbers:

Grade	Enrolled 2005-06	Enrolled 2006-07	Enrolled 2007-08	Enrolled 2008-09	Enrolled 2009-10
PK	0	0	0	0	0
K	0	0	0	0	0
1	0	0	0	0	0
2	0	0	0	0	0
3	0	0	0	0	0
4	0	0	0	0	0
5	0	0	0	0	0
6	0	0	0	0	0
7	0	0	0	0	0
8	0	0	0	0	0
9	0	0	0	0	0
10	0	0	0	0	0
11	0	0	0	0	0
12	0	0	0	0	0
Ungraded	0	0	0	0	0
<b>Total:</b>	0	0	0	0	0

Your District's Open Enrollment (Out) numbers:

Grade	Enrolled 2005-06	Enrolled 2006-07	Enrolled 2007-08	Enrolled 2008-09	Enrolled 2009-10
PK	0	0	0	0	0
K	0	1	0	0	1
1	2	1	1	1	0
2	1	1	1	0	1
3	0	1	0	0	0
4	0	0	0	0	0

5	0	0	0	0	0
6	0	0	1	0	0
7	0	0	0	1	0
8	0	0	1	0	1
9	0	0	0	1	1
10	0	1	0	1	2
11	0	1	1	1	1
12	0	0	0	1	1
Ungraded	0	0	0	0	0
<b>Total:</b>	3	6	5	6	8

**JVSD Enrollment**

Your District participates in a JVSD with the Apollo JVSD District.

Your District's JVS (or "Other") program has the following full and half-time enrollments:

Grade	Enrolled 2000-01	Enrolled 2001-02	Enrolled 2002-03	Enrolled 2003-04	Enrolled 2004-05	Enrolled 2005-06	Enrolled 2006-07	Enrolled 2007-08	Enrolled 2008-09	Enrolled 2009-10
Full-Time 11th	0	0	0	0	0	0	0	0	0	0
Full-Time 12th	0	0	0	0	0	0	0	0	0	0
Half-Time 11th	0	0	0	0	0	0	0	0	0	0
Half-Time 12th	0	0	0	0	0	0	0	0	0	0
<b>Total:</b>	0	0	0	0	0	0	0	0	0	0

**Career Tech. Enrollment**

Your district currently participates in a Career Tech Compact with the following Districts:

Euclid City SD (43950)

South Euclid-Lyndhurst City SD (44792)

Mentor Ex Vill SD (45492)

Your district has the following enrollment for Off-Site Career Tech:

Grade	Enrolled 2000-01	Enrolled 2001-02	Enrolled 2002-03	Enrolled 2003-04	Enrolled 2004-05	Enrolled 2005-06	Enrolled 2006-07	Enrolled 2007-08	Enrolled 2008-09	Enrolled 2009-10
Off-Site Career Tech 11th	0	0	0	0	0	0	51	53	52	62
Off-Site Career Tech 12th	0	0	0	0	0	0	35	42	44	47
<b>Total:</b>	0	0	0	0	0	0	86	95	96	109

Your District also has the following **Career Tech** programs and enrollments:

The following table contains your District's 10-year **Comprehensive Career Tech** enrollment for the "14.0300 - Administrative/Office Technology - 1" program:

Grade	Enrolled 2000-01	Enrolled 2001-02	Enrolled 2002-03	Enrolled 2003-04	Enrolled 2004-05	Enrolled 2005-06	Enrolled 2006-07	Enrolled 2007-08	Enrolled 2008-09	Enrolled 2009-10
Comprehensive Career Tech 11th	0	0	0	0	6	5	6	8	8	2

<b>Comprehensive Career Tech 12th</b>	0	0	0	0	8	4	4	3	8	4
<b>Total:</b>	0	0	0	0	14	9	10	11	16	6

Your district houses a portion of this program **On-Site**.

The following table contains the **On-Site** enrollment for this program:

<b>Grade</b>	<b>Enrolled 2000-01</b>	<b>Enrolled 2001-02</b>	<b>Enrolled 2002-03</b>	<b>Enrolled 2003-04</b>	<b>Enrolled 2004-05</b>	<b>Enrolled 2005-06</b>	<b>Enrolled 2006-07</b>	<b>Enrolled 2007-08</b>	<b>Enrolled 2008-09</b>	<b>Enrolled 2009-10</b>
<b>On-Site Career Tech 11th</b>	0	0	0	0	0	0	2	1	6	6
<b>On-Site Career Tech 12th</b>	0	0	0	0	2	0	1	3	1	4
<b>Total:</b>	0	0	0	0	2	0	3	4	7	10

The following table contains your District's 10-year **Comprehensive Career Tech** enrollment for the "17.0301 - Auto Collision Repair - 6" program:

<b>Grade</b>	<b>Enrolled 2000-01</b>	<b>Enrolled 2001-02</b>	<b>Enrolled 2002-03</b>	<b>Enrolled 2003-04</b>	<b>Enrolled 2004-05</b>	<b>Enrolled 2005-06</b>	<b>Enrolled 2006-07</b>	<b>Enrolled 2007-08</b>	<b>Enrolled 2008-09</b>	<b>Enrolled 2009-10</b>
<b>Comprehensive Career Tech 11th</b>	0	0	0	0	17	8	11	7	11	15
<b>Comprehensive Career Tech 12th</b>	0	0	0	0	10	12	7	10	8	11
<b>Total:</b>	0	0	0	0	27	20	18	17	19	26

Your district does not house students of the **Comprehensive Career Tech** program **On-Site**.

The following table contains your District's 10-year **Comprehensive Career Tech** enrollment for the "17.0303 - Auto Specialization - 5" program:

<b>Grade</b>	<b>Enrolled 2000-01</b>	<b>Enrolled 2001-02</b>	<b>Enrolled 2002-03</b>	<b>Enrolled 2003-04</b>	<b>Enrolled 2004-05</b>	<b>Enrolled 2005-06</b>	<b>Enrolled 2006-07</b>	<b>Enrolled 2007-08</b>	<b>Enrolled 2008-09</b>	<b>Enrolled 2009-10</b>
<b>Comprehensive Career Tech 11th</b>	0	0	0	0	2	7	11	7	2	4
<b>Comprehensive Career Tech 12th</b>	0	0	0	0	2	0	7	6	6	4
<b>Total:</b>	0	0	0	0	4	7	18	13	8	8

Your district does not house students of the **Comprehensive Career Tech** program **On-Site**.

The following table contains your District's 10-year **Comprehensive Career Tech** enrollment for the "09.0205 - Hotels and Resorts - 3" program:

<b>Grade</b>	<b>Enrolled 2000-01</b>	<b>Enrolled 2001-02</b>	<b>Enrolled 2002-03</b>	<b>Enrolled 2003-04</b>	<b>Enrolled 2004-05</b>	<b>Enrolled 2005-06</b>	<b>Enrolled 2006-07</b>	<b>Enrolled 2007-08</b>	<b>Enrolled 2008-09</b>	<b>Enrolled 2009-10</b>
<b>Comprehensive Career Tech 11th</b>	0	0	0	0	7	2	0	6	4	4

<b>Comprehensive Career Tech 12th</b>	0	0	0	0	7	5	3	0	6	4
<b>Total:</b>	0	0	0	0	14	7	3	6	10	8

Your district does not house students of the **Comprehensive Career Tech** program **On-Site**.

The following table contains your District's 10-year **Comprehensive Career Tech** enrollment for the "**07.0302 - Practical Vocational Nursing - 2**" program:

<b>Grade</b>	<b>Enrolled 2000-01</b>	<b>Enrolled 2001-02</b>	<b>Enrolled 2002-03</b>	<b>Enrolled 2003-04</b>	<b>Enrolled 2004-05</b>	<b>Enrolled 2005-06</b>	<b>Enrolled 2006-07</b>	<b>Enrolled 2007-08</b>	<b>Enrolled 2008-09</b>	<b>Enrolled 2009-10</b>
<b>Comprehensive Career Tech 11th</b>	0	0	0	0	0	0	0	0	0	0
<b>Comprehensive Career Tech 12th</b>	0	0	0	0	10	13	10	10	10	13
<b>Total:</b>	0	0	0	0	10	13	10	10	10	13

Your district does not house students of the **Comprehensive Career Tech** program **On-Site**.

The following table contains your District's 10-year **Comprehensive Career Tech** enrollment for the "**17.2306 - Welding & Cutting - 5**" program:

<b>Grade</b>	<b>Enrolled 2000-01</b>	<b>Enrolled 2001-02</b>	<b>Enrolled 2002-03</b>	<b>Enrolled 2003-04</b>	<b>Enrolled 2004-05</b>	<b>Enrolled 2005-06</b>	<b>Enrolled 2006-07</b>	<b>Enrolled 2007-08</b>	<b>Enrolled 2008-09</b>	<b>Enrolled 2009-10</b>
<b>Comprehensive Career Tech 11th</b>	0	0	0	0	11	14	14	9	15	15
<b>Comprehensive Career Tech 12th</b>	0	0	0	0	7	6	13	14	9	7
<b>Total:</b>	0	0	0	0	18	20	27	23	24	22

Your district does not house students of the **Comprehensive Career Tech** program **On-Site**.

The following table contains your District's 10-year **Comprehensive Career Tech** enrollment for the "**04.0810 - Marketing Management And Research - 3**" program:

<b>Grade</b>	<b>Enrolled 2000-01</b>	<b>Enrolled 2001-02</b>	<b>Enrolled 2002-03</b>	<b>Enrolled 2003-04</b>	<b>Enrolled 2004-05</b>	<b>Enrolled 2005-06</b>	<b>Enrolled 2006-07</b>	<b>Enrolled 2007-08</b>	<b>Enrolled 2008-09</b>	<b>Enrolled 2009-10</b>
<b>Comprehensive Career Tech 11th</b>	0	0	0	0	0	0	0	0	0	0
<b>Comprehensive Career Tech 12th</b>	0	0	0	0	15	24	25	23	20	21
<b>Total:</b>	0	0	0	0	15	24	25	23	20	21

Your district does not house students of the **Comprehensive Career Tech** program **On-Site**.

### Boundaries

Your District has not experienced a boundary change since 2004.

### Growth

Your District does not expect substantial growth.

**Additional Information**

You provided these additional comments:

There are pockets in Willoughby that are growing and pockets in Eastlake that are decreasing in enrollment.

**Documents for Submission**

You indicated that you will submit the following documents:

- Copies of any previous enrollment projections completed.

© 2010 DeJONG-HEALY.

Please contact Ann Hoffsis ([osfc@dejonghealy.com](mailto:osfc@dejonghealy.com), 614-440-6687) with any questions or concerns.

## Ann Hoffsis

---

**From:** Nardelli, Betty  
**Sent:** Wednesday, April 21, 2010 2:49 PM  
**To:** annhoffs@dejonghealy.com

Ann,

In response to your request for enrollment projections for Willoughby-Eastlake City Schools there is one proposed subdivision. It has received preliminary plan approval on 3/11/10 from Planning Commission and EAS approval on 3/17/10 from Council. Their next step is final plat and improvement plan approval by Planning Commission and plat approval by Council.

The proposed subdivision is called Arbor Ridge and is proposed for P.P.#27B-53D-4 on Tamarac Blvd. south of Crosscreek Village Parcel 1 and Parcel 2, west of Tam-A-Rac Subdiv. No. 2B and west of Tam-A-Rac apts.

The proposal is 73 single family lots using R-50 regulations on 17.2 acres in a RMF-LR district. The developer is Forest City Land Grp.

That is all that is proposed so far this year.

Betty

Betty Nardelli  
Boards/Commissions Secretary  
City of Willoughby  
One Public Square  
Willoughby, Ohio 44094  
Email: [BNARDELLI@WILLOUGHBYOHIO.COM](mailto:BNARDELLI@WILLOUGHBYOHIO.COM)  
440-953-4334

*This message and any response of it may constitute a public record and thus may be publicly available to anyone who requests it.*



## Ann Hoffsis

---

**From:** Fred Wyss  
**Sent:** Thursday, April 22, 2010 10:03 AM  
**To:** 'Ann Hoffsis'  
**Subject:** RE: Willoughby - Eastlake City SD

Good Morning Ann;

We have one residential subdivision in the planning stages. It is Maple Valley which is off Maple Grove Road. It will have 18 new single family lots available. It is planned to start this summer. Completion date for lot availability would be late 2010. As you know with the economy it would be hard to predict just how quickly the lots would be developed. We have one builder who has found a niche with a certain price point and has successfully filled out the Pine Valley subdivision across Maple Grove from this new location. I'm sure he will be an active player in this new subdivision as well.

I hope this answers your questions.

Regards,

### **Fred Wyss**

**Building Commissioner & Zoning Administrator**  
**City of Willoughby Hills, Dept. of Building & Zoning**  
**440.975.3550 office // 440.918.8749 fax**  
[FredWyss@WilloughbyHills-OH.gov](mailto:FredWyss@WilloughbyHills-OH.gov)

---

**From:** Ann Hoffsis [mailto:annahoffsis@dejonghealy.com]  
**Sent:** Thursday, April 22, 2010 9:45 AM  
**To:** fredwyss@willoughbyhills-oh.gov  
**Subject:** Willoughby - Eastlake City SD

Hi,

I am working on enrollment projections for Willoughby - Eastlake City Schools. Do you have information regarding active or planned single-family development in the District? Specifically I am interested in name of subdivision, total number of lots, number of available lots, and estimated start/completion dates. If you do not have this information but can direct me to someone who may I would appreciate it.

Thanks,

Ann

Ann Hoffsis, REFP

Project Director

**DeJONG-HEALY**

614-440-6687 (direct)

614-467-2048 (fax)

[annahoffsis@dejonghealy.com](mailto:annahoffsis@dejonghealy.com)

[www.dejonghealy.com](http://www.dejonghealy.com)

# SOCDS Building Permits Database

## Query Results

### County Totals

#### Housing Unit Building Permits for: Lake County, OH

	1998	1999	2000	2001	2002	2003	2004	2005	2006	2007	2008
<b>Units in Single-Family Structures</b>	803	746	674	773	711	844	901	817	810	514	325

### All County Jurisdictions

#### Housing Unit Building Permits for: EASTLAKE, OH (Lake County)

	1998	1999	2000	2001	2002	2003	2004	2005	2006	2007	2008
<b>Units in Single-Family Structures</b>	121	54	22	32	15	13	20	24	26	6	7

#### Housing Unit Building Permits for: FAIRPORT HARBOR VILLAGE, OH (Lake County)

	1998	1999	2000	2001	2002	2003	2004	2005	2006	2007	2008
<b>Units in Single-Family Structures</b>	4	4	3	0	6	0	0	0	0	0	0

#### Housing Unit Building Permits for: LAKE COUNTY PART, OH (Lake County)

	1998	1999	2000	2001	2002	2003	2004	2005	2006	2007	2008
<b>Units in Single-Family Structures</b>	0	0	0	0	0	0	0	0	0	0	0

#### Housing Unit Building Permits for: LAKE COUNTY UNINCORPORATED AREA, OH (Lake County)

	1998	1999	2000	2001	2002	2003	2004	2005	2006	2007	2008
<b>Units in Single-Family Structures</b>	429	475	476	582	511	613	600	483	372	219	129

<b>Housing Unit Building Permits for: LAKELINE VILLAGE, OH (Lake County)</b>											
	1998	1999	2000	2001	2002	2003	2004	2005	2006	2007	2008
<b>Units in Single-Family Structures</b>	0	0	0	0	0	0	0	0	0	0	0

<b>Housing Unit Building Permits for: MADISON TOWNSHIP, OH (Lake County)</b>											
	1998	1999	2000	2001	2002	2003	2004	2005	2006	2007	2008
<b>Units in Single-Family Structures</b>	0	0	0	0	0	0	0	0	0	0	0

<b>Housing Unit Building Permits for: MENTOR, OH (Lake County)</b>											
	1998	1999	2000	2001	2002	2003	2004	2005	2006	2007	2008
<b>Units in Single-Family Structures</b>	149	123	82	86	97	84	74	73	90	63	47

<b>Housing Unit Building Permits for: MENTOR-ON-THE LAKE, OH (Lake County)</b>											
	1998	1999	2000	2001	2002	2003	2004	2005	2006	2007	2008
<b>Units in Single-Family Structures</b>	0	0	0	0	0	0	0	0	0	0	0

<b>Housing Unit Building Permits for: NORTH PERRY VILLAGE, OH (Lake County)</b>											
	1998	1999	2000	2001	2002	2003	2004	2005	2006	2007	2008
<b>Units in Single-Family Structures</b>	0	0	0	0	0	0	0	0	0	0	0

<b>Housing Unit Building Permits for: PAINESVILLE, OH (Lake County)</b>											
	1998	1999	2000	2001	2002	2003	2004	2005	2006	2007	2008
<b>Units in Single-Family Structures</b>	17	12	11	12	20	37	145	111	124	95	66

<b>Housing Unit Building Permits for: TIMBERLAKE VILLAGE, OH (Lake County)</b>											
	1998	1999	2000	2001	2002	2003	2004	2005	2006	2007	2008
<b>Units in Single-Family Structures</b>	0	0	0	0	0	0	1	1	0	0	0

<b>Housing Unit Building Permits for: WAITE HILL VILLAGE, OH (Lake County)</b>											
	1998	1999	2000	2001	2002	2003	2004	2005	2006	2007	2008
<b>Units in Single-Family Structures</b>	0	0	0	0	0	0	0	0	0	0	0

<b>Housing Unit Building Permits for: WICKLIFFE, OH (Lake County)</b>											
	1998	1999	2000	2001	2002	2003	2004	2005	2006	2007	2008
<b>Units in Single-Family Structures</b>	11	11	7	6	9	18	4	8	6	14	6

<b>Housing Unit Building Permits for: WILLOUGHBY HILLS, OH (Lake County)</b>											
	1998	1999	2000	2001	2002	2003	2004	2005	2006	2007	2008
<b>Units in Single-Family Structures</b>	10	12	7	13	2	16	17	35	85	12	7

<b>Housing Unit Building Permits for: WILLOUGHBY, OH (Lake County)</b>											
	1998	1999	2000	2001	2002	2003	2004	2005	2006	2007	2008
<b>Units in Single-Family Structures</b>	60	52	62	42	51	63	40	82	107	94	56

<b>Housing Unit Building Permits for: WILLOWICK, OH (Lake County)</b>											
	1998	1999	2000	2001	2002	2003	2004	2005	2006	2007	2008
<b>Units in Single-Family Structures</b>	2	3	4	0	0	0	0	0	0	11	7

[Click for Comma-Delimited Output](#)

[Click to Download\\* Output in EXCEL](#)

\*: Save the output as an Excel workbook \*.xls file.

# SOCDS Building Permits Database

## Query Results

### County Totals

**Housing Unit Building Permits for:  
Lake County, OH  
(Preliminary Data)**

	Jan. 2009	Feb. 2009	Mar. 2009	Apr. 2009	May 2009	June 2009	July 2009	Aug. 2009	Sep. 2009	Oct. 2009	Nov. 2009	Dec. 2009	Total 2009
<b>Units in Single-Family Structures</b>	10	15	14	21	24	33	22	25	23	28	21	20	<b>256</b>

### All County Jurisdictions

**Housing Unit Building Permits for:  
EASTLAKE, OH  
Lake County  
(Preliminary Data)**

	Jan. 2009	Feb. 2009	Mar. 2009	Apr. 2009	May 2009	June 2009	July 2009	Aug. 2009	Sep. 2009	Oct. 2009	Nov. 2009	Dec. 2009	Total 2009
<b>Units in Single-Family Structures</b>	0	0	2	1	0	0	0	0	0	0	0	0	<b>3</b>

**Housing Unit Building Permits for:  
FAIRPORT HARBOR VILLAGE, OH  
Lake County  
(Preliminary Data)**

	Jan. 2009	Feb. 2009	Mar. 2009	Apr. 2009	May 2009	June 2009	July 2009	Aug. 2009	Sep. 2009	Oct. 2009	Nov. 2009	Dec. 2009	Total 2009
<b>Units in Single-Family Structures</b>	0	0	0	0	0	0	0	0	0	0	0	0	<b>0</b>

**Housing Unit Building Permits for:  
LAKE COUNTY PART, OH  
Lake County  
(Preliminary Data)**

	Jan. 2009	Feb. 2009	Mar. 2009	Apr. 2009	May 2009	June 2009	July 2009	Aug. 2009	Sep. 2009	Oct. 2009	Nov. 2009	Dec. 2009	Total 2009
<b>Units in Single-Family Structures</b>	0	0	0	0	0	0	0	0	0	0	0	0	0

**Housing Unit Building Permits for:  
LAKE COUNTY UNINCORPORATED AREA, OH  
Lake County  
(Preliminary Data)**

	Jan. 2009	Feb. 2009	Mar. 2009	Apr. 2009	May 2009	June 2009	July 2009	Aug. 2009	Sep. 2009	Oct. 2009	Nov. 2009	Dec. 2009	Total 2009
<b>Units in Single-Family Structures</b>	3 <sub>i</sub>	6 <sub>i</sub>	7 <sub>i</sub>	9 <sub>i</sub>	4	12 <sub>i</sub>	6	10 <sub>i</sub>	11	3	8 <sub>i</sub>	8 <sub>i</sub>	87

Note: i = Imputed Value

**Housing Unit Building Permits for:  
LAKELINE VILLAGE, OH  
Lake County  
(Preliminary Data)**

	Jan. 2009	Feb. 2009	Mar. 2009	Apr. 2009	May 2009	June 2009	July 2009	Aug. 2009	Sep. 2009	Oct. 2009	Nov. 2009	Dec. 2009	Total 2009
<b>Units in Single-Family Structures</b>	0	0	0	0	0	0	0	0	0	0	0	0	0

**Housing Unit Building Permits for:  
MADISON TOWNSHIP, OH  
Lake County  
(Preliminary Data)**

	Jan. 2009	Feb. 2009	Mar. 2009	Apr. 2009	May 2009	June 2009	July 2009	Aug. 2009	Sep. 2009	Oct. 2009	Nov. 2009	Dec. 2009	Total 2009
<b>Units in Single-Family Structures</b>	0	0	0	0	0	0	0	0	0	0	0	0	0

**Housing Unit Building Permits for:  
MENTOR, OH  
Lake County  
(Preliminary Data)**

	Jan. 2009	Feb. 2009	Mar. 2009	Apr. 2009	May 2009	June 2009	July 2009	Aug. 2009	Sep. 2009	Oct. 2009	Nov. 2009	Dec. 2009	Total 2009
<b>Units in Single-Family Structures</b>	4	3	0	2	2	3	0	5	1	3	2	3	28

**Housing Unit Building Permits for:  
MENTOR-ON-THE LAKE, OH  
Lake County**

<b>(Preliminary Data)</b>													
	<b>Jan. 2009</b>	<b>Feb. 2009</b>	<b>Mar. 2009</b>	<b>Apr. 2009</b>	<b>May 2009</b>	<b>June 2009</b>	<b>July 2009</b>	<b>Aug. 2009</b>	<b>Sep. 2009</b>	<b>Oct. 2009</b>	<b>Nov. 2009</b>	<b>Dec. 2009</b>	<b>Total 2009</b>
<b>Units in Single-Family Structures</b>	0	0	0	0	0	0	0	0	0	0	0	0	0

<b>Housing Unit Building Permits for: NORTH PERRY VILLAGE, OH Lake County (Preliminary Data)</b>													
	<b>Jan. 2009</b>	<b>Feb. 2009</b>	<b>Mar. 2009</b>	<b>Apr. 2009</b>	<b>May 2009</b>	<b>June 2009</b>	<b>July 2009</b>	<b>Aug. 2009</b>	<b>Sep. 2009</b>	<b>Oct. 2009</b>	<b>Nov. 2009</b>	<b>Dec. 2009</b>	<b>Total 2009</b>
<b>Units in Single-Family Structures</b>	0	0	0	0	0	0	0	0	0	0	0	0	0

<b>Housing Unit Building Permits for: PAINESVILLE, OH Lake County (Preliminary Data)</b>													
	<b>Jan. 2009</b>	<b>Feb. 2009</b>	<b>Mar. 2009</b>	<b>Apr. 2009</b>	<b>May 2009</b>	<b>June 2009</b>	<b>July 2009</b>	<b>Aug. 2009</b>	<b>Sep. 2009</b>	<b>Oct. 2009</b>	<b>Nov. 2009</b>	<b>Dec. 2009</b>	<b>Total 2009</b>
<b>Units in Single-Family Structures</b>	1	2	2	2	10	6	6	3	4	4	2	2	44

<b>Housing Unit Building Permits for: TIMBERLAKE VILLAGE, OH Lake County (Preliminary Data)</b>													
	<b>Jan. 2009</b>	<b>Feb. 2009</b>	<b>Mar. 2009</b>	<b>Apr. 2009</b>	<b>May 2009</b>	<b>June 2009</b>	<b>July 2009</b>	<b>Aug. 2009</b>	<b>Sep. 2009</b>	<b>Oct. 2009</b>	<b>Nov. 2009</b>	<b>Dec. 2009</b>	<b>Total 2009</b>
<b>Units in Single-Family Structures</b>	0	0	0	0	0	0	0	0	0	0	0	0	0

<b>Housing Unit Building Permits for: WAITE HILL VILLAGE, OH Lake County (Preliminary Data)</b>													
	<b>Jan. 2009</b>	<b>Feb. 2009</b>	<b>Mar. 2009</b>	<b>Apr. 2009</b>	<b>May 2009</b>	<b>June 2009</b>	<b>July 2009</b>	<b>Aug. 2009</b>	<b>Sep. 2009</b>	<b>Oct. 2009</b>	<b>Nov. 2009</b>	<b>Dec. 2009</b>	<b>Total 2009</b>
<b>Units in Single-Family Structures</b>	0	0	0	0	0	0	0	0	0	0	0	0	0

<b>Housing Unit Building Permits for: WICKLIFFE, OH Lake County</b>													
---	--	--	--	--	--	--	--	--	--	--	--	--	--

<b>(Preliminary Data)</b>													
	<b>Jan. 2009</b>	<b>Feb. 2009</b>	<b>Mar. 2009</b>	<b>Apr. 2009</b>	<b>May 2009</b>	<b>June 2009</b>	<b>July 2009</b>	<b>Aug. 2009</b>	<b>Sep. 2009</b>	<b>Oct. 2009</b>	<b>Nov. 2009</b>	<b>Dec. 2009</b>	<b>Total 2009</b>
<b>Units in Single-Family Structures</b>	0	0	0	1	0	1	2	0	0	3	1	0	<b>8</b>

<b>Housing Unit Building Permits for: WILLOUGHBY HILLS, OH Lake County (Preliminary Data)</b>													
	<b>Jan. 2009</b>	<b>Feb. 2009</b>	<b>Mar. 2009</b>	<b>Apr. 2009</b>	<b>May 2009</b>	<b>June 2009</b>	<b>July 2009</b>	<b>Aug. 2009</b>	<b>Sep. 2009</b>	<b>Oct. 2009</b>	<b>Nov. 2009</b>	<b>Dec. 2009</b>	<b>Total 2009</b>
<b>Units in Single-Family Structures</b>	0	0	0	0	3	0	1	0	1	2	1	1	<b>9</b>

<b>Housing Unit Building Permits for: WILLOUGHBY, OH Lake County (Preliminary Data)</b>													
	<b>Jan. 2009</b>	<b>Feb. 2009</b>	<b>Mar. 2009</b>	<b>Apr. 2009</b>	<b>May 2009</b>	<b>June 2009</b>	<b>July 2009</b>	<b>Aug. 2009</b>	<b>Sep. 2009</b>	<b>Oct. 2009</b>	<b>Nov. 2009</b>	<b>Dec. 2009</b>	<b>Total 2009</b>
<b>Units in Single-Family Structures</b>	2	4	3	4	4	11	7	5	4	13	7	5	<b>69</b>

<b>Housing Unit Building Permits for: WILLOWICK, OH Lake County (Preliminary Data)</b>													
	<b>Jan. 2009</b>	<b>Feb. 2009</b>	<b>Mar. 2009</b>	<b>Apr. 2009</b>	<b>May 2009</b>	<b>June 2009</b>	<b>July 2009</b>	<b>Aug. 2009</b>	<b>Sep. 2009</b>	<b>Oct. 2009</b>	<b>Nov. 2009</b>	<b>Dec. 2009</b>	<b>Total 2009</b>
<b>Units in Single-Family Structures</b>	0	0	0	2	1	0	0	2	2	0	0	1 <sub>i</sub>	<b>8</b>
Note: i = Imputed Value													

Right-click this link [SOCDS Building Permits Monthly Request](#) and add it to your "Bookmarks" or "Favorites" to call monthly updates of this data request.

[Click for Comma-Delimited Output](#)

[Click to Download\\* Output in EXCEL](#)

\*: Save the output as an Excel workbook \*.xls file.





## Ann Hoffsis

---

**From:** Keith Miller  
**Sent:** Sunday, May 02, 2010 3:36 PM  
**To:** Ann Hoffsis  
**Subject:** Re: Willoughby - Eastlake City SD (Lake Co.) - DRAFT Enrollment Projections

**Follow Up Flag:** Follow up  
**Flag Status:** Flagged

Hi Ann,

This email will serve as notice to you that your projection reports have been accepted. Thank you for your hard work! One question - will you send me or email the final reports?

Keith Miller, Superintendent  
Willoughby-Eastlake Schools  
440 975 3757

>>> Ann Hoffsis <[annahoffsis@dejonghealy.com](mailto:annahoffsis@dejonghealy.com)> 4/28/2010 11:52 AM >>>

Hi Dr. Miller,

Attached are the draft enrollment projections report and cover letter for your review. Please let us know if you have any questions or concerns. I would be happy to review the draft report with you.

We will need acceptance of these projections, in writing, in order to expedite your future OSFC projects.

Thanks,

Ann

Ann Hoffsis, REFP

Project Director

**DeJONG-HEALY**

614-440-6687 (direct)

614-467-2048 (fax)

[annahoffsis@dejonghealy.com](mailto:annahoffsis@dejonghealy.com)

[www.dejonghealy.com](http://www.dejonghealy.com)