

LENS

LENS

1939

Foreword

WILLOUGHBY High School has for four years been far more than a school to this particular class; it has rather been a place where youth has enjoyed happy preparation for life beyond scholastic years, where friendships, courage, and loyalty are inevitable and contagious. It is with this thought in mind and also the hope that Willoughby High School will prove a place of friendly learning to other classes, that the Senior Class of 1939 presents to the school this yearbook, the first in 17 years.

The name, "LENS," serves to interpret the motif, that of viewing the life of the school through the lens of a camera. It is hoped that the reader of this book will glean from the pages all the pleasures which were instilled in them by the Senior Class.



Dedication

PASSING are the glorious fancies of yesteryear; passing are the light flippancies of youth; and soon to be gone are our years at Willoughby High School. But one thought remains: the knowledge that Time cannot take from us the ideals, the hope, and the advice instilled in this class by Superintendent Otis.

Through the counsel of his kind words and thoughts he has conveyed to the students all the abilities of his mind plus the practical experience which he has stored up during the years.

It seems really proper, therefore, to say that after all trivialities have come, been presented, and gone, the members of this class of 1939 will carry in their hearts through each succeeding year the determination to produce fruits of this man's seed.

Table of Contents

A Lens-Eye View Of—

- I ADMINISTRATION
- II CLASSES
- III SPORTS
- IV ACTIVITIES
- V ADVERTISING



School Boards



Township Board

MRS. MAUDE GATES, *President*
MRS. MAUDE SCHULTZ, S. G.
BROWN, DEAN D. FULLER, and
CLERK R. C. FARQUAHAR.

Village Board

DR. J. G. SHIMMON, *President*
L. B. HART, H. J. BECHTOLD,
GLENN LOWMAN, GEORGE
NEVILLE, and CLERK W. D.
KIRBY.

High School Committee

H. J. BECHTOLD, *Chairman*
S. G. BROWN, D. D. FULLER,
GLENN LOWMAN, and CLERK
R. C. FARQUAHAR.



MR. H. J. BECHTOLD

Due to the fact that Willoughby High School takes its pupils from the schools of the township as well as the village, and because the people of the township also support the high school by their taxes, it was thought advisable to form a central committee to administer the affairs of the high school.

This committee under the able direction of Mr. H. J. Bechtold has been doing much to make our school one of the county's best.

Faculty



SUPERINTENDENT E. M. OTIS

Mr. Otis has been with the school for 36 years as both an instructor and in an executive capacity. He joined the faculty in 1903 as a teacher of science, in 1904 he became principal and in 1909 he was made superintendent—a position he has since held. He graduated from Western Reserve and attended Columbia University.

Mr. Woodside is a new addition to the staff of the high school this year coming to us from Mentor where he was principal of the grade school.

He has come to us by way of Ohio State University and Western Reserve and brings a boundless enthusiasm for his work. We are very happy to welcome him and hope he will remain with us for many years and continue his fine work.



PRINCIPAL J. B. WOODSIDE

Teachers



First Row

WILBY O. BARKER, A.B.
Teaches: Chemistry and Biology.
Attended: Ohio U. and Ohio State U.

MARGARET REID BLESSING, A.B.
Teaches: Social Sciences.
Attended: Western College for Women and Ohio State U.

MILDRED R. BOLEY, B.S. in Commercial Education
Teaches: Shorthand 1 and 2, and Typing 1 and 2.
Attended: Bliss Business College.

MARGARET BRODERICK, A.B.
Teaches: English, Latin and Journalism.
Attended: Ursuline College and U. of Michigan.

HAROLD H. BROWN, B.S.
Teaches: Shop and Drawing.
Attended: Kent State U.

ELLEN BUYER, B.S. Education.
Teaches: Shorthand, Typing, and Business English.
Attended: Miami U.

FLORINE FELS CARROLL, B.S. Education.
Teaches: English, and Speech.
Attended: Toledo U., Ohio State U., and Western Reserve U.

Second Row

DOROTHY JANE COWELL, B.S. Art
Teaches: Art.
Attended: Western Reserve, and Cleveland School of Art.

MADELEINE FICKES, B.E.
Teaches: History.
Attended: Western Reserve U.

ROSALIND S. FOUTS, B.S. Education.
Teaches: Home Economics.
Attended: Ohio U.

MARGARET W. GIBBS, B.A., M.A.
Teaches: Bookkeeping, Salesmanship, Commercial Law, Advertising, Shorthand, and Typing.
Attended: Ohio State U.

HARVEY T. HELM, B.S. Education.
Teaches: Physics, General Science, Biology, Economics, and Safety.
Attended: Antioch, Kent State U., Ohio Northern U. and Western Reserve.

LELAND JENKINS, B.S. Education.
Teaches: Industrial Arts, Mechanical Drawing.
Attended: Ohio U.

Teachers



First Row

EVELYN WEIT JUDSON, B.S.M.
Teaches: Music.
Attended: Oberlin.

ADELE KNIGHT, A.B.
Teaches: Latin, Business Training.
Attended: Western Reserve U.

HERBERT M. LAKE, B.A., M.A.
Teaches: French and English.
Attended: Hiram and Western Reserve University.

CHARLES W. RUDDICK, A.B., B.S. Music
Teaches: Music and Music Appreciation.
Attended: Ohio Northern Univ.

CLEO SAWYER, A.B.
Teaches: American Literature and English Literature.
Attended: Western College for Women.

ALAN C. SHANKLAND, A.B., M.A.
Teaches: English.
Attended: Ohio Wesleyan, Western Reserve.

FRANCES SIMON, B.A.
Teaches: Economics and Sociology.
Attended: Ohio State U. and Western Reserve U. 3 & 4.

Second Row

SYLVIA SIMON, B.A.
Teaches: German, English, Physical Geography and Vocational Civics.
Attended: Western Reserve U.

RAY E. SINGER, B.S. in Physical Education.
Teaches: Physical Education, Health and Science.
Attended: Ohio U.

JEAN SMITH, B.S. in Physical Education.
Teaches: Physical Education and Business Training.
Attended: Akron University.

ETHEL M. SPALLER, B.S.
Teaches: Physical Education.
Attended: Ithaca School of Phys. Educ., Ohio State U. and Columbia U.

ROBERT A. WENDORF, A.B.
Teaches: Economics and Geography.
Attended: Western Reserve U.

HARRY C. WINKLER, A.B., M.A.
Teaches: Mathematics.
Attended: Mount-Union and Ohio State U.

Office Staff



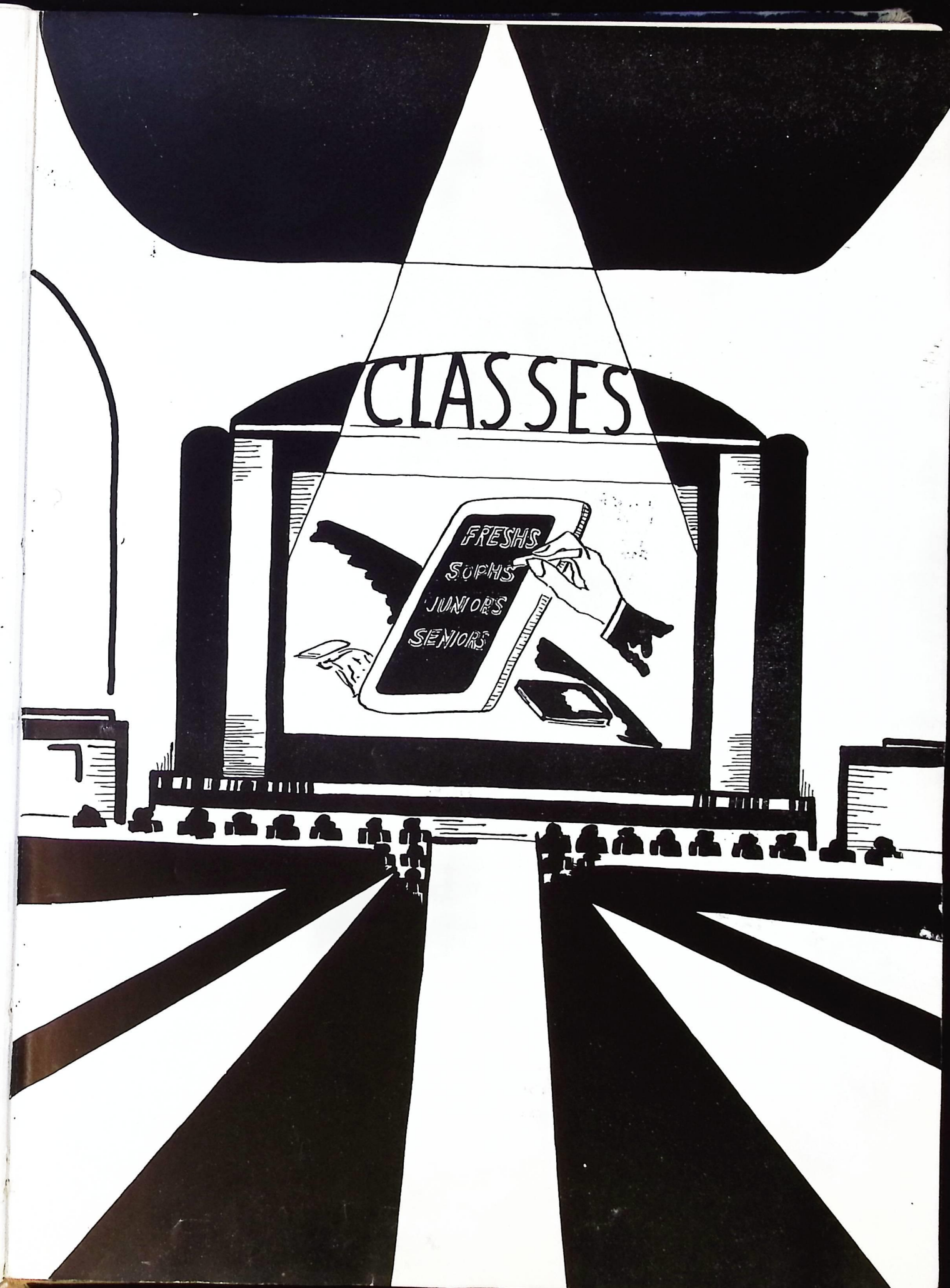
The secretarial duties of both Mr. Otis and Mr. Woodside are very capably handled by the ever-smiling and charming Miss Winifred Sigsby.

Assisting her in the routine affairs we have a group of Senior Commercial students chosen by Mrs. Boley. They are:



MISS WINIFRED SIGSBY

Helen Cie Chanski, Betty Jane Charske, John Mramor, Evelyn Eddy, Ruth Phillips, Eleanor McGonnell, Betty Larson, Dorothy Roberts, Gerry Harvey, Edith Gunvalsen, Andrew Klima, Ruth Lynn, Mary Morgan, Helen Crobaugh, and Margaret Anderson.



Class of 1939



ANNE MARIE THURMAN
Annie

Course: Commercial
 Birthday: Aug. 25, 1921
 Activities: "W" club 2-3-4, Commercial Club 2-3-4, Treas. 3, V. Pres. 2, Friendship Club 1-2-3-4, Scholarship Club 1-3-4, Band 1, Altanada 4, Staff 4, French Club 3-4, Lens 4, Glee Club 1-2-3, Class Sec. 4, Homeroom Pres. 1-2-4, Pep Club 4, National Honor Society 4.
 "A merry heart maketh a cheerful countenance."



ARTHUR TATMAN
Art

Course: College
 Birthday: Oct. 31, 1921
 Activities: Football 2-3-4, French Club 3-4, Scholarship Club 1-2-3-4, Pres. 3, Student Council 4, Hi-Y 3-4, Physics Club 4, "W" Club 4, President of Senior Class.
 "An honest man is the noblest work of man."



ROBERT VINCENT DUFF
Bob

Course: College
 Birthday: Aug. 15, 1921
 Activities: Dramatic 1-2-3-4, Senior class V, Pres. 4, Sr. Home Rm. Pres. 4, Senior Play.
 "From 'Pink and Patches' to 'Headed for Eden'."



MARJORY JANE GRADY
Margy

Course: Commercial
 Birthday: March 23, 1921
 Activities: Scholarship 1-2-3-4, Commercial Club 2-3-4, Student Council 1-2-3-4, Glee Club 1-2-3-4, Searchlight Staff 4, Treasurer of Senior Class 4, National Honor Society.
 "Born for success she seemed."



RICHARD MONTGOMERY ALDRIDGE
Bing

Course: College
 Birthday: Nov. 25, 1920
 Activities: Hi-Y 2-3-4, Latin Club 1-2, Dramatic Club 2-3-4, Art Club 4, Sec. 4, Scholarship Club 1-2-4, Searchlight Staff 1-2, Microphone Club 4, Senior Play 4.
 "To talk without effort is, after all, the greatest charm of all."



MARGARET DAGNY ANDERSON
Shrimpy

Course: Commercial
 Birthday: Feb. 21, 1921
 Activities: Commercial 3-4, Orchestra 3-4.
 "The girl with a bow."



ARTHUR PRITCHARD ARMINGTON
Art

Course: College
 Birthday: June 24, 1921
 Activities: Hi-Y 3-4, Band 2-3-4, Dramatic Club 3-4, Treasurer 4, Physics Club 4, Latin Club 1-2, National Honor Society 4.
 "If you want to get ahead of me in an argument, you have to get up in the morning."



LESTER PAUL ARNDT
Toughy

Course: College
 Birthday: June 18, 1921
 Activities: Track 2-3.
 "Wait! I have to comb my hair!"



WINTON DARWOOD AXFORD
Wint.

Course: Commercial
 Birthday: Nov. 24, 1919
 Activities: Football 2-3, Basketball 2-4, "W" Club 4.
 "Footloose and fancy free."



MARIAN JEANETTE BAILEY
Garfield

Course: College
 Birthday: Oct. 31, 1921
 Activities: Friendship Club 1-2-3-4, Latin Club 1-2-3, Glee Club 1-2-3-4.
 "You have a nimble wit, I think 'twas made of Atlanta's heel."



MILDRED MARIAN BATES
Millie

Course: College
 Birthday: July 23, 1920
 Activities: Altanada 3-4, Friendship Club 4, Glee Club 4, Searchlight 5.
 "Her Art was her life."

Class of 1939



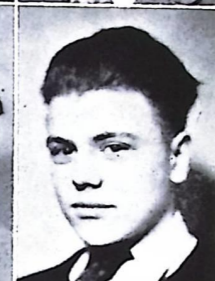
KENNETH BARTLETT
Kenny
Course: College
 Birthday: Jan. 16, 1921
 Activities: Hi-Y 3-4, Physic Club 4.
 "Small, but oh—so handsome!"



ROBERT BECHTOL
Bob
Course: College
 Birthday: Jan. 14, 1921
 Activities: Hi-Y 3-4, Glee Club 1-2-3-4, Latin Club 2-3-4, French Club 4.
 "Seen but seldom heard."



BETTY JUNE BECHTOLD
Becky
Course: College
 Birthday: June 21, 1921
 Activities: Friendship Club 1-2-3-4, Senior Play 4, French Club 4, Student Council 4, Lens 4, Altanada 4.
 "Pep, personality and common sense; an incomparable combination."



WILLIAM BIDLINGMAYER
Bill
Course: General
 Birthday: July 7, 1920
 Activities: "Capable of greater things."



HAROLD JACK BOLLINGER
Course: Commercial
 Activities: Entered 1936, Track 2-3-4, Orchestra 2, Hi-Y 3-4 Secretary 4, Commercial Club 3 Treasurer 3, Student Council 4, "W" Club 4.
 "A friendly lad with a cheerful smile, doing something, always worthwhile."



EVELYN RUTH BOYTZ
Dolly
Course: Commercial
 Birthday: Feb. 24, 1922
 Activities: Scholarship Club 4.
 "Stubborn labor conquers all things."



HECTOR BORELLI
Mose
Course: Commercial
 Birthday: July 2, 1921
 Activities: Football 1-2-3-4, Track 4, "W" Club 4.
 "And the greatest of these was Hector."



MARGARET A. BRADBEER
Marge
Course: Commercial
 Birthday: Dec. 7, 1920
 Activities: "A quiet and retiring mood."



STANLEY BRAIN
Course: Commercial
 Birthday: May 20, 1920
 Activities: Commercial Club 2-3-4.
 "Capable of greater things."



EILEEN BROWN
Joe
Course: College
 Birthday: May 21, 1921
 Entered 1936
 Activities: Friendship Club 2-3-4, Take-n-Easel Club 4, Latin Club 2, French Club 4, Band 2-3-4.
 "Art—that is her drawing point."



VIOLET BROWN
Red
Course: General
 Birthday: Sept. 21, 1921
 Activities: "W" Club 4, Friendship Club 1-2-3-4, Altanada 4, Hiking Club 4.
 "As versatile as the colors of the rainbow."



MARTHA ELIZABETH BURT
Sparky
Course: College
 Birthday: Oct. 11, 1921
 Activities: Cheerleader 3-4, "W" Girl 3, Altanada Club 4, Hiking 4.
 "Joy of youthful sports is mine."

Class of 1939

FRANCIS CALL
Flash
Course: Commercial
Birthday: Dec. 2, 1921
Activities: Commercial Club 1-2.
"When studies and fun come together he takes fun—not the other."

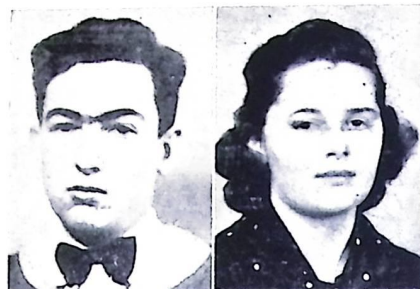
JACK CAMPBELL
Withdrawn

MARY JANE CHRISTENSEN
Jerry
Course: College
Birthday: Mar. 12, 1922
Activities: Altanada 4, French Club 4, Scholarship Club 4.
"The joy of youth and health, her eyes displayed."

BETTY ALICE CLARK
Betsy
Course: College Prep.
Birthday: Feb. 9, 1921
Activities: Entered W. H. S. as Soph. A on Nov. 2, 1936, Friendship Club 2-3-4, Cabinet 3-4, Glee Club 3-4, Scholarship Club 2-3-4, Circulation Manager, Lens 4, National Honor Society 4.
"Her personality hits a high C with everyone."

ANNABELLE CORRAN
Course: General
Birthday: April 6, 1921
Activities: Friendship Club 2-3, Take-N-Easel Club 4, Glee Club 3.
"A merry little maiden free from care."

JEANNE MARIE COTTER
Jeannie
Course: General
Birthday: May 21, 1921
Activities: Entered in 1937, "W" Club 3-4 Pres. 4, Friendship Club 3-4.
"She has friends because she is one."



JANET CARR
Pat
Course: College
Birthday: Feb. 10, 1921
Activities: Entered 1938, Friendship Club 4.
"Quietly different, merry among friends."

BETTY JANE CHARSKIE
Slug
Course: Commercial
Birthday: Feb. 5, 1921
Activities: Entered in 1936, Friendship Club 2-3-4, Commercial Club 2-3-4 Pres. 4, Glee Club 3-4.
"Earnestly and without fail she does her best."

HELEN CLARA CIECHANSKI
Blondie
Course: Commercial
Birthday: July 15, 1921
Activities: Searchlight staff 4, Office staff 4, Glee club 3-4, Commercial 2-3-4, Senior Play.
"Divinely tall and most divinely fair."

ESTER MAY CONLEY
Sugar
Course: College
Birthday: Mar. 19, 1921
Activities: F. C. Club 3-4, French 4, Glee club 1-2-3-4.
"There is an instinctive longing that can find satisfaction only in service."

VIVIAN CLAPP
Vi
Course: College
Birthday: Aug. 19, 1921
Activities: Friendship Club.
"Begone dull care! Thou and I shall never agree."

HELEN CROBAUGH
Honey
Course: Commercial
Birthday: April 16, 1922
Activities: F. C. Club I, Commercial I.
"Quiet in a different sort of way."

GERALD DANIELS
Skeet
Course: College
Birthday: Feb. 5, 1921
Activities: Scholarship Club 1-2-3-4, Basketball 4, Latin Club 1-2, French Club 3-4, Hi-Y 3-4, Debate Club 4, Glee Club 4, Physics Club 4, National Honor Society 4.
"Study if you would learn."

GILBERT DE VAULT
Gil
Course: General
Birthday: Nov. 21, 1920
Activities: Physics 4, Searchlight 4, Lens 4.
"I like to work if I like the work."

WALTER WEED
Wally
Course: Commercial
Birthday: Nov. 10, 1919
Activities: Commercial Club 4.
"In silence he learns how and to whom to speak."

CYRIL JOSEPH EDWARDS
"Cy"
Course: General
Birthday: Feb. 21, 1921
Activities: Track 2-3-4.
"An extremely reserved fellow."

JEAN ELY
Course: Commercial
Birthday: Jan. 23, 1922
Activities: Glee Club 1, Friendship Club 2, Commercial Club 1.
"Her voice is as soft as her features."

JEFFRY FATICA
Wings
Course: Commercial
Birthday: Nov. 12, 1920
Activities: Football 1-2-3-4, Basketball 2-3, "W" Club 4.
"Whatever he did, was done with so much ease, In him alone 'twas natural to please."



JERRY CLAIR DAVIS
Scoop
Course: College
Birthday: Oct. 5, 1921
Activities: Scholarship 2-3, French 4, Latin 2, Hi-Y 3-4, Glee Club 2-3, Senior Play.
"When I feel like exercising, I just lie down until the feeling goes away."

JOHN EDWARD DELSANTRO
Johnnie
Course: College
Birthday: Mar. 15, 1922
Activities: Hi-Y 3-4 Treas. 4, "W" Club 2-3-4, Scholarship 1-3-4, Football 1-2-3-4, Track 2-3-4, French 4, Glee club 2-3, Physics 4, Lens 4, National Honor Society 4.
"A good sport and a fine sportsman."

EVELYN JEANNE EDDY
"Ev"
Course: Commercial
Birthday: Nov. 1, 1920
Activities: F. C. 1-2-3-4, Glee Club 1-2-3-4, Senior Play.
"Good nature—her middle name."

JUNE MAXINE EDWARDS
"Prune"
Course: College
Birthday: June 8, 1921
Activities: Friendship 1-2-3-4 Social Chairman 3, Vice President 4, Student Council 2-3-4, Glee Club 1-2-3-4, French Club 3-4, National Honor Society 4.
"What is so rare as a day with June!"

DOROTHY FATICA
Dot
Course: Commercial
Activities: Commercial Club 2-3-4.
"She goes quietly along her way, Never having too much to say."

ADELBERT FERGUSON
Bud
Course: Commercial
Birthday: Feb. 26, 1919
Activities: Flying, Football 4.
"Mechanics his job, school his hobby."



Class of 1939

Class of 1939

DOROTHY ROSALIE FROST
Frosty
 Course: General
 Birthday: Nov. 18, 1920
 Activities: Friendship Club 1-2-3-4, Glee Club 1-2.
 "A pleasant girl with a pleasant way."

MARTHA ANN GRANGER
 Course: College
 Birthday: July 7, 1921
 Activities: Friendship Club 1-2-3-4, Glee Club 1-2-3-4.
 "Song charms the senses."

RALPH GREEN
Greenie
 Course: College
 Birthday: Apr. 28, 1921
 Activities: "W" Club 4, Physics Club 4, Track 3-4, Scholarship Club 4.
 "His sunny temper is like a summer day, it sheds brightness on everybody."

ROYAL UPTON GROATHE
Groathee
 Course: General
 Birthday: Sept. 29, 1921
 Activities: Band 1-2-3-4.
 "Away with work, be gone I say, My world is made of fun and play."

EDITH ELIZABETH GUNVALSEN
Eddie of Gunny
 Course: College
 Birthday: April 14, 1921
 Activities: Friendship Club 1-2-3-4 Sec. 4, French Club 3-4, Latin Club 1-2-3, Scholarship Club 1-3-4, Scholarship Team 2-3, Altanada Club 3-4, Secretary of Junior Class, "W" Club 2-3-4, Glee Club 1-2, Band 1, Senior Play, National Honor Society 4.
 "A winning way, a friendly smile, in all a girl who is worth while."

CHARLES HANSON
Chuck
 Course: Commercial
 Birthday: June 27, 1921
 Activities:
 "Who's seldom in a hurry. And never has a worry."



JOAN EILEEN GASCI
Jo
 Course: General
 Birthday: Oct. 28, 1919
 Activities: Friendship Club 1-2-3, Glee Club 1-2-3-4, Art Club 4.
 "The future is purchased by the present."

GEORGE RICHARD GREEN
Greenie
 Course: Commercial
 Birthday: Oct. 31, 1920
 Activities: Physics Club 4.
 "Let the world step by, I'll take it easy."

CLAUDE LESTER GRIFFITH
Griff
 Course: Commercial
 Birthday: Jan. 13, 1922
 Activities: Band 2-3-4, Commercial Club, Scholarship Club.
 "Success is the sum of small efforts repeated day in and day out."

MARGARET RUTH GROVER
Marge or Rosy
 Course: Commercial
 Birthday: Feb. 28, 1921
 Activities: Friendship Club 1-2-3-4, Glee Club 1-2, Office Staff 4.
 "Playful smiles do twinkle in her eyes."

DAVID HAKER
Dave
 Course: General
 Birthday: June 28, 1921
 Activities: Hi-Y 3-4, Band 3-4, Physic Club 4.
 "Blessed is the man who invented sleep."

GERALDINE MAY HARVEY
Gerry
 Course: Commercial
 Birthday: Sept. 25, 1921
 Activities: Commercial Club 3, Friendship Club 1-2-3.
 "Friendly, jolly, peppy gal, She surely makes a first-rate pal."

JAMES HAYWARD
Jim
 Course: Commercial
 Birthday: Mar. 25, 1921
 Activities: Commercial Club 3, Scholarship Club 1.
 "For he's a jolly good fellow—"

GEORGE HENNICKER
Peck
 Course: Commercial
 Birthday: Mar. 27, 1920
 Activities: Football 1-4, Basketball 1-2-3-4, "W" Club 4.
 "As much a part of sports as sports are of him."

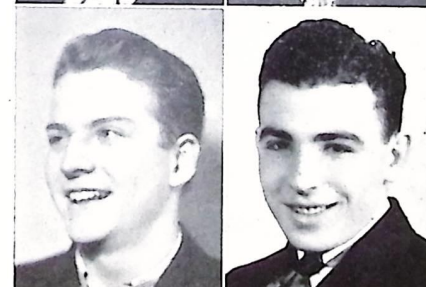
RUTH LAURA HINKSTON
Hinky
 Course: Commercial, College
 Birthday: Dec. 6, 1920
 Activities: Friendship Club 1-2-3-4, Glee Club 1-2.
 "Always in a dancing mood."

SANDFORD EMRICH
Hershey Sandy
 Course: College
 Birthday: Feb. 11, 1922
 Activities: Cheer Leader 3-4, Glee Club 3-4, Hi-Y 3-4, Senior Play.
 "He loves not well whose love is bold."

ALFRED LAIRD HORTON
Alfalpa
 Course: College
 Birthday: Aug. 13, 1920
 Activities:
 "It's dubious as to his vocalamity."

WILLIAM JOHNSON
Willy
 Course: Commercial
 Birthday: June 4, 1921
 Activities:
 "A youth never bold of spirit, still and quiet."

Class of 1939



ALICE RUTH HENGESBACH
Hep
 Course: College
 Birthday: March 3, 1921
 Activities: Friendship Club 1-2-3-4 President 4, French Club 4 President, Student Council 3-4, Senior Play 4, Altanada Club 3-4, National Honor Society 4.
 "Everyone is an addict to her pleasant personality."

KATHERINE MAY HENRY
Katie
 Course: College Preparatory
 Entered W. H. S. as a Junior
 Birthday: Aug. 29, 1921
 Activities: Friendship Club 3-4 Treas. 4, Scholarship Club 3-4, Glee Club 3-4, Latin Club 3-4 Sec. 3, Lens 4, National Honor Society 4.
 "And people think the owl is wise—"

MARY MARGARET MORGAN
Red
 Course: Commercial
 Birthday: March 20, 1920
 Activities: Commercial Club, Friendship Club.
 Quotation:
 "She shows forth like a meteor red,
 Nothing but good of her can be said."

WILLIAM JACOB HILTY
Bill
 Course: College
 Birthday: Dec. 1, 1921
 Activities: Senior Play, Hi-Y 3-4, Oan-Bee Play Shop 4, Glee Club 2, Latin Club 2-3, Football 2, National Honor Society 4.
 "Men like me are hard to find."

CARMEN M. IAFELICE
Iaf
 Course: Commercial
 Birthday: Oct. 9, 1920
 Activities: Advertising Manager of Lens, Treas. of Home Room, Searchlight Staff 4.
 "Feminine hearts are won by curly hair."

EUGENE JUDKINS
Jeep
 Course: Commercial
 Birthday: 1921
 Activities: Track.
 "A likeable fellow and one who tends to his own affairs."

Class of 1939

RICHARD KIMMEL
Dick (103 yd. Kimmel)
Course: College
Birthday: Sept. 16, 1921
Activities: Hi-Y 3-4, Student Council 2-3-4, Football 3-4, Track 3-4, "W" Club 4, Physics Club 4, Secretary of Senior Class.
"Some think the world is made for fun and frolic—So do I—"



ANDREW STEVE KLIMA
"Andy"
Course: Commercial
Birthday: Nov. 30, 1919
Activities: Commercial Club 3.
"Do today thy nearest duty."



JEAN ELLURA KNOUFF
Course: General
Birthday: Dec. 30, 1919
Activities: Friendship Club 1-2-3-4, 13 Hearts Club.
"Beauty cost her nothing, Her virtues were so rare."



BETTY JANE LARSON
Red
Course: Commercial
Birthday: Dec. 30, 1921
Entered W. H. S. in 1938
Activities: Friendship Club 4.
"Pretty and dignified is this lass."



PAUL ALLEYNE LAWRENCE
Cris
Course: General
Birthday: Nov. 25, 1921
Activities: Glee Club 1-2-3-4, Commercial Club 3-4.
"Oh! What a tangled web I wove."



FRED DANIAL LOUCKS
Fritz
Course: College
Birthday: Nov. 1, 1920
Activities: Physics Club 4
"Not too careless, not too sad.
Not too studious, nor too glad."



MARY ROSE KLCO
Mars
Course: Commercial
Birthday: April 25, 1921
Activities: Friendship 3-4, Commercial Club 1-2-3-4.
"Quiet and not much to say."

ALICE MAE KLINGENSMITH
"Muscles"
Course: Commercial
Birthday: Oct. 3, 1921
Activities: Glee Club 1-2-3, Friendship Club 3.
"By the work one knows the worker."

RUTH VIRGINIA LAMOS
Lamie
Course: Commercial
Birthday: June 4, 1919
Activities: Friendship Club 1-2-3-4, Glee Club 1-2-4, Orchestra 1-2-4, Homeroom Vice President 1-2, Homeroom President 3-4.
"A light heart lives long."

JUNE ANN LAWRENCE
Jo-Jo
Course: Commercial
Birthday: June 28, 1921
Activities: Friendship Club 1-2-3-4, Commercial Club 2-3-4, Scholarship Club 2-3, Glee Club 3-4, Searchlight Staff 4.
"A conscientiousness about her pleasure as well as her work."

HUGH LEGGAT
Whitey
Course: General
Birthday: May 9, 1920
Activities: Football 2-3-4, Track 2-3-4, Hi-Y 2-3-4, Glee Club 1-2-3-4, "W" Club 4.
"Yuh gotta be a football hero—to get along with the beautiful girls."

RUTH LYNN
"Rock"
Course: Commercial
Birthday: Oct. 12, 1920
Activities: Friendship Club 1-2-3-4, Office Staff 4.
"Jolliness is her passport."

GORDON ALLAN MACLENNAN
Mac
Course: College
Birthday: July 17, 1921
Activities: Physics Club 4
"Life's too short to bustle."

KENNETH C. MARA
Doc.
Course: Commercial
Birthday: Feb. 26, 1921
Activities: Commercial Club 4.
"A business-like attitude goes far in the world of man."

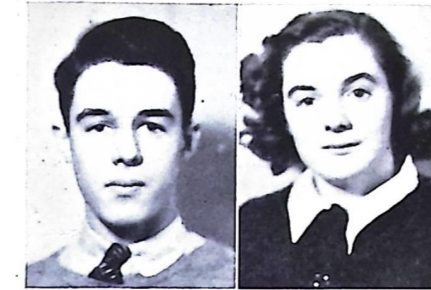
CAROLINE HAAG McDERMOTT
Carol
Course: General
Entered 1936
Birthday: June 8, 1921
Activities: Dramatic Club 3-4, Glee Club 2-3-4, Latin Club 2-3, French Club 4, Friendship Club 3-4.
"So persistent she would have the last word with an echo."

JOHN GORDON MCKINNON
Jack
Course: College
Birthday: Dec. 1, 1921
Activities: Band 2-3-4, Orchestra 3, German Band 4, Latin Club 2, French Club 4, National Honor Society 4.
"There's advantage in inches."

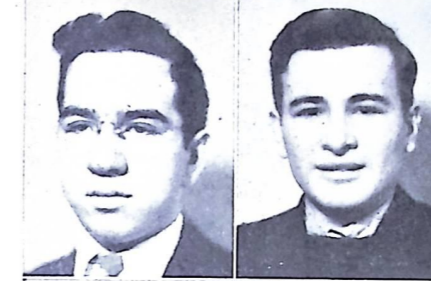
THEODORE JOSEPH MYERS
Ted
Course: College
Birthday: July 27, 1921
Activities: Hi-Y 3-4, Physics Club 4, Searchlight Staff 4, Senior Play 4, Student Council Treasurer 4.
"A model of satorical elegance."

CHARLES MILLER
Chuck
Course: Commercial
Birthday: Aug. 22, 1920
Activities: Basketball 1-2-3-4, Commercial Club.
"No profit shows where is no pleasure."

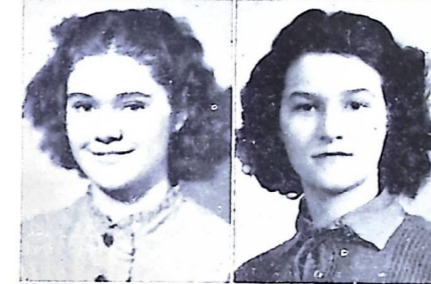
Class of 1939



ELEANOR JOYCE MACLENNAN
Mac
Course: College
Birthday: Nov. 9, 1919
Activities: Friendship Club 1-2-3-4, Cabinet 4, "W" Club 1-2-3-4, Glee Club 3-4, Dance Club 4, Senior Play.
"Some waters are deeper than they appear."



LAWRENCE VICTOR MASTRANGELO
Little Bull
Course: General
Birthday: April 15, 1920
Activities: "Everywhere and yet no place."



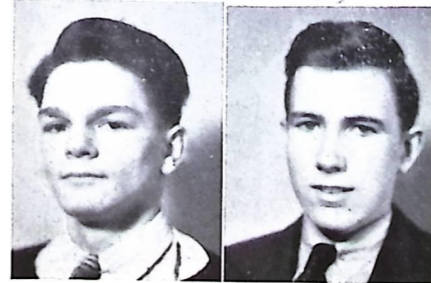
ELEANOR MAE MCGONNELL
Ellie
Course: Commercial
Birthday: May 22, 1921
Activities: Commercial Club 3, Office Staff 4.
"Sweetly and stately and with all the grace of womanhood."



JEANNE METCALF
Jeannie
Course: College
Birthday: Dec. 19, 1920
Activities: Friendship Club 1-2-3-4, Glee Club 1-2-3-4, Latin Club 1-2, French Club 2, Searchlight Staff 4, Scholarship Club 1-2-3, National Honor Society 4.
"Whatever she does, she does thoroughly."



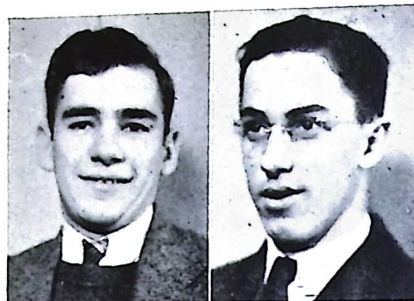
JUNE MERRITT
Sprout
Course: Commercial
Birthday: July 28, 1921
Activities: "W" Club 4, Altanada 3-4, Friendship Club 1-2-3-4.
"A mirth quake of laughter."



JOHN P. MILLS
Johnie
Course: College
Birthday: Jan. 31, 1922
Activities: Hi-Y 2-3-4, Physics Club 4, French Club 3-4.
"A powerful good among his fellows."

Class of 1939

ROBERT HENRY MORGAN
Bob
Course: Commercial
Birthday: June 8, 1920
Activities:
"He who does not think too much of himself is much more esteemed than he imagines."



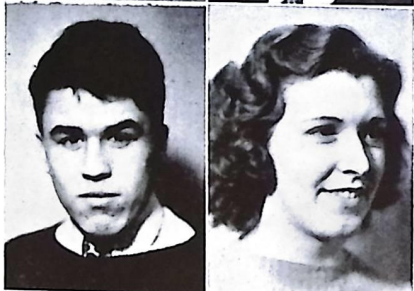
JOHN PATRICK MYERS
Butch
Course: Commercial
Birthday: Mar. 17, 1921
Activities:
"Every man has his gift and the tools go to him that can use them."



EDITH LENORE NEIL
Course: College
Birthday: Mar. 20, 1922
Activities: Friendship Club 1-2-3-4, Glee Club 2-3-4, Scholarship Club 3-4, Orchestra 3-4, Searchlight Staff 2, Scholarship Team 2-3, Lens 4, Spelling Team 4, National Honor Society 4.
"The world has not heard from me yet—but wait!"



NORMAN PAUL NOWAK
Norm
Course: General
Birthday: June 20, 1919
Activities:
"P'raps you'll know me someday."



FRANK PETEE JR.
Junior or Pete
Course: College
Birthday: Mar. 22, 1921
Activities: Student Council 1-2-3-4 Vice Pres. 4, Hi-Y 3-4, Lens, Editor in Chief 4, Searchlight 2-3-4 Editor 3, Union High Eye Assist. Ed. 3, Scholarship Club 1, Physics Club 4, National Honor Society 4.
"A small boy with empires in his brain."



MAUDE RENO
Sis
Course: Commercial
Birthday: Jan. 6, 1921
Activities: Friendship Club 1-2-3-4, Commercial Club 3-4, Pep Club 4.
"A likeable person and one who attendeth her affairs."



JOHN RUSSELL MRAMOR
Socialist
Course: Commercial
Birthday: May 18, 1921
Activities: Commercial Club, Senior Play.
"A quiet man and quite a man."

JACK SHERMAN NASON
Lefty
Course: Commercial
Birthday: May 31, 1921
Activities: Band 1-2-3-4, Commercial Club 2-3-4, Track 4.
"Cool, calm, and efficient."

ELMORE NORD
Jo, No-No, Slim
Course: General
Birthday: Feb. 17, 1921
Activities: Band 1-2-3-4 Vice President 4, Camera Club 4.
"Well versed in the meaning of the word 'quiet'."

IRENE GERTRUDE O'DONNELL
Shorty
Course: Commercial
Birthday: May 7, 1921
Activities: Commercial Club 3, Friendship Club 1-2.
"A good disposition is more valuable than gold."

RUTH PHILLIPS
Philly
Course: College
Birthday: Mar. 28, 1921
Activities: Friendship Club 1-2-3-4 Cabinet 4, Scholarship Club 1-2-3-4, Glee Club 1-2-4 President 4, Latin Club 1-2, French Club 3-4, Orchestra 4, Band 3, Scholarship Team 1-2-3, National Honor Society 4.
"A pleasant girl with a pleasant way."

MINNIE RIDER
Course: Commercial
Birthday: Oct. 6, 1919
Activities: Commercial Club 4.
"Modesty seldom resides in a breast that is not enriched with nobler virtues."

Class of 1939

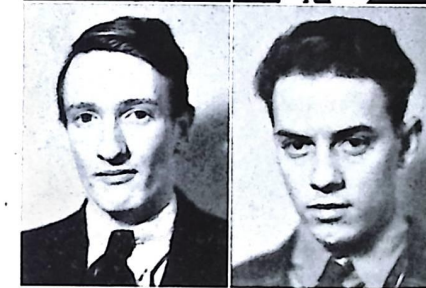
GLENN HOWARD RITTER
Jitters
Course: College
Birthday: July 7, 1921
Activities: Hi-Y 3-4, French Club 4, Glee Club 1-2-3-4, Physics Club 4.
"Blond, blushing, and beloved by all."



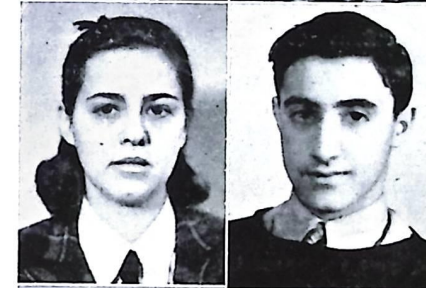
HENRY ROBERT ROEDIGER
Hank
Course: General
Birthday: May 5, 1919
Activities: Football 2-3-4
"I like work; it fascinates me; I can sit and look at it for hours."



ROBERT ROYER
Ripper
Course: General
Birthday: Oct. 18, 1919
Activities: Basketball 3-4.
"Rhythm in his fingers."



ANITA GRACE SCAGLIONE
Course: Commercial
Birthday: Jan. 10, 1920
Activities: Friendship Club 1-2-3, Band 1-2-3-4.
"Her words are few and softly said—"



ALMA SCHLANG
Smiles
Course: General
Birthday: Nov. 3, 1921
Activities: Entered Willoughby in 1938, Friendship Club 4.
"Every thought and action a drama on the huge stage of life."



GEORGE SCHROCK
Course: Commercial
Birthday: April 24, 1920
Activities: Commercial Club 2-3-4, Basketball 3.
"There isn't anywhere under the sun
A better lover of good clean fun."



DOROTHY CAROLINE ROBERTS
Dot
Course: Commercial
Birthday: July 10, 1921
Activities: Glee Club 1-4, Friendship Club 1-4.
"The business man's dream of a perfect secretary."

JOSEPH FRANCIS ROSPLOCK
Joe
Course: College
Birthday: Jan. 31, 1921
Activities: Hi-Y 2-3-4 Pres. 4, Latin Club 1-2 Pres. 1-2, Physics 4, Scholarship Club 1-2-3-4, Pres. of Junior Class, Student Council 1-2-3-4 Pres. 4, Football 3-4, Track 2-3-4, Buckeye Boy's State 3, National Honor Society 4.
"A part of every activity and every activity a part of Joe."

HENRY EVERETT SAMSON
Hank
Course: Commercial
Birthday: May 12, 1921
Activities: Commercial Club 2-3-4.
"Like Napoleon he is small but mighty."

JOSEPH R. SCAROLA
Joe
Course: General
Birthday: May 28, 1922
Activities: Searchlight 3-4, Vice President of Home Room 4.
"You don't realize what I could do or be—"

GEORGE ALFRED SCHMIDT
Oscar
Course: Commercial
Birthday: Nov. 19, 1921
Activities: Hi-Y 3-4, Band 1-2-3-4, Orchestra 2-3-4, Camera Club 4, German Band 3-4, Scholarship Club 4.
"Born a musician, genuine friend
Willoughby High boosters, all recommend."

RAYMOND SCHULTZ
Dutch
Course: General
Birthday: April 13, 1921
Activities: Track.
"Always friendly in his actions,
Never particular in his exactions."

Class of 1939

REIDAR H. SEAHOLM
Course: College
Birthday: March 25, 1921
Activities: Hi-Y, Scholarship Club.
"His blushes keep him in the pink of condition."

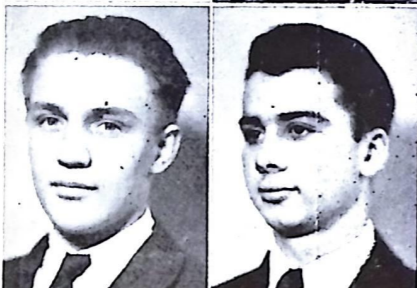
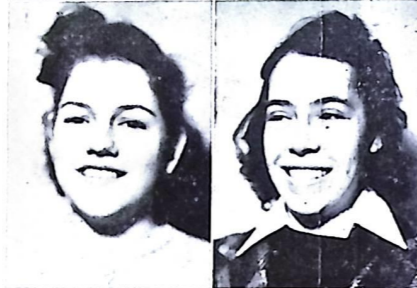
PATRICIA ANN SHERIDAN
Patty
Course: College
Birthday: Aug. 3, 1921
Activities: Band 1-2, Glee Club 1, Altanada 3-4, Friendship Club 1-2-3-4, French Club 4, Latin Club 2-3, Cheerleading 2-3-4.
"She is never at a loss for words."

ALFRED SHUTT
Al
Course: College
Birthday: July 20, 1920
Activities: Band 2-3-4, Physics Club 4, Orchestra 1-2.
"Shux, you hafta get some fun outta life."

GEORGE GRAY SIMONSON
Course: College
Birthday: Nov. 13, 1920
Activities: Basketball 4, Track 2-3-4, "W" Club 4.
"He is every inch a man for plowing and work he surely can."

BETTY LA VERNE SPEARS
Betsy
Course: Commercial
Birthday: Jan. 4, 1921
Activities: Glee Club 1-2-3, Commercial Club 1-2-3-4, Friendship Club 1-2-3.
"A smile for all, a greeting glad, An amiable, jolly way she had."

ROBERT F. STAMBERGER
Bob
Course: Commercial
Birthday: May 15, 1920
Activities: Hi-Y 3-4.
"Truth and honesty have no need of loud protestations."



RAY SHAFFER
Junie
Course: Commercial
Birthday: May 17, 1921
Activities: Track.
"I wrestle for my credit."

KATHRYN LOUISE SHIMMON
Kay
Course: College
Birthday: July 28, 1921
Activities: Glee Club 1, Latin Club 2-3, Friendship Club 1-2-3-4, French Club 3-4, Band 3-4, Dramatic Club 4, Senior Play 4, Scholarship Club 3-4, Lens 4, National Honor Society.
"Original, enthusiastic and interesting."

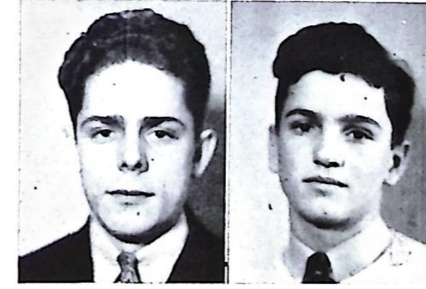
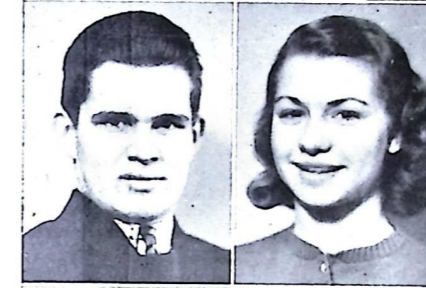
CLIFFORD EDWARD SIEBOLD
Seeb
Course: Commercial
Birthday: Nov. 24, 1920
Activities: Football 3-4, Track 3-4, Art Club 4, Glee Club 4, Commercial Club 2-3-4.
"Whose happy life is one perpetual grin."

BARBARA SMITH
Bobbie
Course: General
Birthday: Oct. 16, 1920
"Let the world step by, I'll take it easy."

JOHN FREDERICK STAFFORD
Pete
Course: College
Birthday: March 22, 1921
Activities: Football 2-3-4, Track 4, Basketball 3, Hi-Y 3-4, "W" Club 2-3-4 Sec. 4, Glee Club 2.
"He wears his thoughts on his tongue."

CHARLES STASEK
Gabby
Course: General
Birthday: Dec. 16, 1920
Activities: Searchlight 4, Lens 4, Entered 1937.
"An occasional pun makes classroom more fun."

Class of 1939



EDWARD STEBBINS
Bud
Course: Commercial
Activities: Commercial Club 3-4, Scholarship Club 1-2-3.
"I want to have my own way and what's more I will, too."

DONALD F. STURM
Porky
Course: General
Birthday: June 24, 1921
Activities: Football 2-3-4, Basketball 1-2-3-4, Track 1-2-3-4, Glee Club 1-2-3, Hi-Y 3-4, "W" Club 4.
"I like school, all except the studies."

NANCY MARIE VENDETTI
Nan
Course: Commercial
Birthday: March 25, 1921
Activities: Commercial Club 2-3-4, Dramatic Club (Pres. 4) 3-4, Friendship Club 2-3-4, "W" Club 3-4, Altanada 3-4, Glee Club 1-2-3.
"Gentle-mannered and good natured."

WILLIAM WAGNER
Bill
Course: Commercial
Birthday: June 1,
Activities: Hi-Y Club 3-4.
"Jack of all trades; some day a queen will take him."

MARIAN STILLISANO
Mary
Course: Commercial
Birthday: Jan. 22, 1920
"Bright was her face with smile and words of welcome and gladness."

IRENE GRACE SWAIN
Doc
Course: College
Birthday: March 24, 1921
Activities: Friendship Club 1-2-3-4, Cabinet 3, Scholarship Club, "W" Club 2-3-4, Treas. 3, Latin Club 2-3, Sec. & Treas., French Club, Searchlight Staff 2, Glee Club 3-4, Homeroom Treas. 4, National Honor Society 4, Pep Club, Senior Play.
"Full of merriment but also the deeper notes, sincerity herself."

FRANCES KATHERINE STILLISANO
Frankie
Course: Commercial
Birthday: March 1, 1921
Activities: "W" Club 3-4.
"The 'eyes' have it."

FRANK WACHCIC
Franz
Course: General
Birthday: May 2, 1920
Activities: Football Manager 1-2-3-4, "W" Club 4.
"All work and no play, Makes school a dull day."



Class of 1939

PARTHENA JETT WILSON
Patty
Course: Commercial
Birthday: Oct. 22, 1921
Activities: Glee Club 1-3-4, Friendship Club 1-2-3-4.
"She speaks, behaves, and acts just as she ought."



DONALD WHITNEY
Windy
Course: College
Birthday: Feb. 14, 1921
Activities: Physics Club 4, Scholarship Club 3-4, Scholarship Team 3.
"Few things are impossible to diligence."



HELEN LOUISE WOLKERSDORFER
Beisy
Course: College
Birthday: Aug. 18, 1920
Activities: Friendship Club 1-2-3-4, Latin Club 2, French Club 4, Student Council 1-2-3-4, Dramatic Club 2-3-4, Senior Play 4, Searchlight 1-2.
"A merry maiden free from care."



LAURA JANE WALLACE
Lollie
Course: Commercial
Birthday: Oct. 17, 1921
Activities: Friendship Club 1-2-3, Glee Club 1-2-3.
"And her modest ways and behavior pleased us very much."



LOIS EVELYN WINEGAR
Loie

Course: College
Birthday: April 26, 1921
Activities: Friendship Club 1-2-3-4, Cabinet 2-3-4, Student Council 1-2-3-4, Scholarship Club 1-2-3-4, Latin Club 1-2-3, Treas. 2, Searchlight Staff 2, French Club 3-4, "W" Club 2-3-4, Sec. & Treas. 4, Glee Club 3-4, Lens 4, Senior Play, National Honor Society.
"With malice towards none and a kind word for all."

ELEANOR BERNICE WESTERBERG
Pat

Course: Commercial
Birthday: Jan. 4, 1920
Activities: Commercial Club 1-2-3-4, Friendship Club 1, Glee Club 1.
"Good natured, always ready to help someone."

SHIRLEY JUNE ZICKERMAN

Course: General
Birthday: June 17, 1921
Activities: Dramatic Club 3-4, Sec. 4, Commercial Club 4.
"A true friend is a glimpse of heaven."

ELFRIEDE WACHIC
Fritz

Course: College
Birthday: Sept. 29, 1921
Activities: Scholarship 3-4, French Club 3-4, Glee Club 1, National Honor Society 4.
"Thy modesty is a candle to thy merit."

Class of 1939



National Honor Society

AFTER a lapse of one year this society has again been revived, and on March 30 twenty-two seniors were informed that they had been chosen for membership in this organization which requires superiority in scholarship, service, and character.

The members who were chosen by the faculty are:

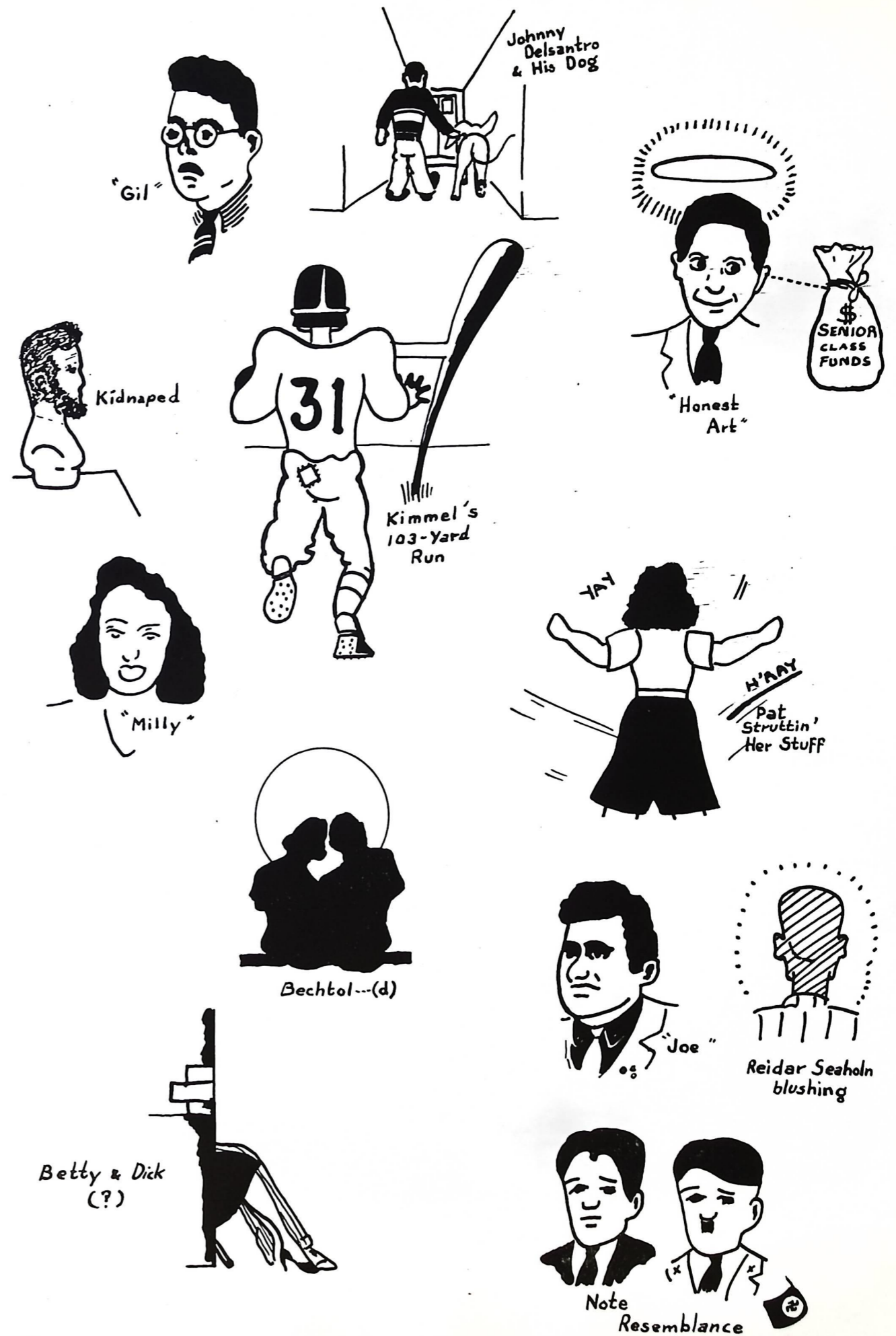
Anne Thurman
Marjory Grady
Arthur Armington
Betty Clark
Gerald Daniels
John Delsantro
June Edwards
Alice Hengesbach
Edith Gunvalsen
Katherine Henry
William Hilty

Jack McKinnon
Jeanne Metcalf
Lenore Neil
Frank Petee
Ruth Phillips
Joseph Rosplock
Kathryn Shimmom
Irene Swain
Elfriede Wachic
Lois Winegar
Richard Aldridge (not pictured)

What We Remember Them For:

Richard Aldridge—artistic ability
 Margaret Anderson—violin playing
 Arthur Armington—red sweater
 Lester Arndt—his book reports
 Winton Axford—jitterbugging
 Marian Bailey—caustic wit
 Mildred Bates—garrulous loquacity
 Kenneth Bartlett—smallness of stature
 Bob Bechtol—reserve
 Betty Bechtol—sparkling eyes
 William Bidlingmayer—shyness
 Harold Bollinger—his nickname "Jack"
 Evelyn Boytz—brown eyes
 Hector Borelli—typical football player
 Margaret Bradbeer—soft voice
 Stanley Brain—sense of humor
 Eileen Brown—rhythm
 Violet Brown—athletic ability
 Martha Burt—cheerleading
 Francis Call—good nature
 Janet Carr—sweetness
 Betty Charske—cheerful disposition
 Mary Jane Christensen—ping-pong
 Helen Cie Chanski—blond hair
 Betty Clark—swell person
 Esther Conley—interest in art
 Annabel Corron—demureness
 Vivian Clapp—pleasant manner
 Jeanne Cotter—basketball
 Helen Crobaugh—skating ability
 Gerald Daniels—intelligence
 Jerry Davis—dry humor
 Gilbert DeVault—Annual activity
 John Delsantro—sportsmanship
 Bob Duff—dramatic excellence
 Evelyn Eddy—"Kate" in Senior Play
 Cyril Edwards—quietness
 June Edwards—friendly intelligence
 Jean Ely—complexion
 Dorothy Fatica—retiring personality
 Joan Gacsi—employment bureau
 Marjory Grady—capability
 Martha Granger—singing
 George Green—ten-gallon hat
 Ralph Green—Audrey Mason
 Claude Griffith—contagious smile
 Royal Groathe—accordion
 Margaret Grover—skating
 Edith Gunvalsen—popularity
 Dave Haker—interest in chemistry
 Charles Hanson—fastidious
 Gerry Harvey—smallness
 James Hayward—interest in sports
 Alice Hengesbach—speaking ability
 George Hennicker—basketball
 Katherine Henry—titan hair
 Ruth Hinkston—peppiness
 Mary Morgan—red hair
 Sanford Hershey—lovmaking in public
 William Hilty—his blase attitude
 Alfred Horton—"Alfalfa"
 Carmen Iafelice—new words
 William Johnson—quietude
 Eugene Judkins—Jeep
 Richard Kimmel—THAT coat
 Mary Kico—pleasantness
 Andrew Klima—office duties
 Alice Klingensmith—office work
 Jean Knouff—Homecoming Queen
 Ruth Lamos—raven locks
 Betty Larson—good dancing

June Ann Lawrence—excellence in typing
 Paul Lawrence—carefree attitude
 Hugh Leggat—his neck-breaking speed
 Fred Loucks—interest in chemistry
 Ruth Lynn—brown eyes
 Gordon MacLennan—ping-pong
 Joyce MacLennan—swimming
 Kenneth Mara—John Mramor
 Lawrence Mastrangelo—his way with the girls
 Caroline McDermott—dramatic club
 Eleanor McGonnell—her carriage
 Jack McKinnon—German band
 Jean Metcalf—studying in advance
 Theodore Myers—portrayal of "Limby"
 June Merritt—gymnastic ability
 Charles Miller—basketball
 John Mills—oratory
 Bob Morgan—green sweater
 John Mramor—Socialism
 John Myers—chest expansion
 Jack Nason—baseball
 Lenore Neil—music
 Elmore Nord—camera
 Norman Nowak—Bud Stebbins
 Ruth Phillips—likability
 Frank Petee—"Flying Reporter"
 Maud Reno—sports
 Minnie Rider—quietness
 Howard Ritter—campus cut-up
 Dorothy Roberts—chic
 Henry Roediger—crooning
 Joe Rosplock—versatility
 Robert Royer—flying fingers
 Henry Samson—stature
 Anita Scaglione—height
 Joe Scarola—puns
 Alma Schlang—eyes
 George Schmidt—cornet
 George Schrock—skating
 Raymond Schultz—Charles Miller
 Reidar Seaholm—good nature
 Ray Schaeffer—ping-pong
 Patricia Sheridan—pep
 Kathryn Shimmon—a lot of fun
 Alfred Shutt—Boy Scout
 Clifford Siebold—his dancing
 George Simonson—track
 Barbara Smith—stateliness
 Betty Spears—Eleanor Westerberg
 Jack Stafford—football hero
 Bob Stamberger—shyness
 Charles Stasek—art
 Bud Stebbins—Norman Nowak
 Marian Stillisano—her smile
 Donald Sturm—Romeo
 Irene Swain—sportsmanship
 Nancy Vendetti—dramatic club
 Frances Stillisano—black hair
 Elfreida Wachic—modesty
 Frank Wachic—team manager
 Bill Wagner—wavy hair
 Laura Jane Wallace—pleasant nature
 Walter Weed—quietness
 Patty Wilson—friendliness
 Lois Winegar—ingeniousness
 Donald Whitney—scientific ability
 Eleanor Westerberg—Betty Spears
 Louise Wolkersdorfer—vim, vigor and vitality



"Gil"

Johnny Delsantro & His Dog



"Honest Art"



Kidnaped



Kimmel's 103-Yard Run



"Milly"



Pat Struttin' Her Stuff



Bechtol--(d)



"Joe"



Reidar Seaholm blushing

Betty & Dick (?)



Note Resemblance

Class Prophecy

Back in the dark ages of 1944 a few years following the June commencement exercises, Lenore Neil, heretofore virtually unknown, astounded the world with a sequel to Margaret Mitchell's "Gone With the Wind", namely, "Back With the Breeze". Following in the footsteps of its sister work, the book skyrocketed to fame, selling even more copies than its predecessor.

Two years ago in 1949, to be exact, the Mara-Griffith-Morgan Film Company decided to have its head scenario writer, Lois Winegar, adapt the book for the screen. After exhausting screen tests the director, Ted Myers, and Producer James Hayward selected the cast. Going into the field of animated cartoons, they found Winton Axford posing for the cartoon strip "Lil", Abner drawn by Charles Stasek. They unanimously selected him as the perfect type of Butler Rhett. With a great deal of difficulty they finally persuaded Marjory Grady Fuller to leave her domestic duties to enact the role of Hara O'Scarlett, who was in love with Wilkes Ashley, portrayed by Bob Duff. He was discovered by Ralph Green, talent scout for M. G. M., selling a New Black Hair Dye, a secret formula discovered by David Haker, who is about to market a new potion that does away with sleep. He is using for experimental purposes, William Bidlingmayer, Lawrence Mastrangelo, and Francis Call. The role of Mel Lanie will be portrayed by Jean Knouff, discovered reading tea leaves in Shirley Zickerman's Zippy Tea Room where Maude Reno, Margaret Bradbeer and Mary Klco served tables.

And now, after two years of extensive research, and enormous expenditures, the World Premiere is being held in an especially built theater, the largest of its kind, in Willoughby, designed by George Green and constructed by the firm of Henry Samson and Bob Stamberger. The air conditioning facilities were installed by Bob Bechtol and the modern effects in lighting were designed by Jeffrey Fatica.

The population of Willoughby is in an uproar; an air of festivity reigns, due mostly to the fact that the first woman president of the United States will be here to start the first reel of the film at the premiere. She is Anne Thurman, who was elected on the platform, "Men Shall No Longer Criticize Women's Hats." Her opponent was John Mramor, outstanding radical socialist, who ran on the platform, "Women's Hats Should Be Done Away With." The National Chairman, who so ably handled Miss Thurman's campaign, was Alice Hengesbach, assisted by Nancy Vendetti. Her cabinet, who will also travel to Willoughby with Miss Thurman, are as follows: The Secretary of State is Mrs. Ruth Lynn Hanson, who was recommended by her husband because she was such a good housekeeper that he thought she could keep the affairs of state in good order. The Secretary of No Labor, the only male member in the cabinet, is Jerry Davis. The Secretary of The Cash Register is Mildred Bates, known for her ability to borrow money. Secretary of Anything-but-Peace is Caroline McDermot, who has a pull with the army. Secre-

Class Prophecy

tary of Billet-Doux is Alma Schlang. The president cut down her cabinet to six members so that she could use their salaries to purchase those stunning new hats from Mary Jane Christensen's new corps of Cranium Crushers.

And now, it is time for the president to arrive. De Vault's Airport is thronged with classmates. Among these we see the noted explorer Royal Groathe and his wife, Betty Spears, who is a prominent cosmetician, trying to invent a freckle-removing cream. The Misses Pat Sheridan, Jean Metcalf and Katherine Henry, three nurse assistants of Dr. Sanford Hershey, head surgeon of the new Bartlett Broken Bones Building, are chatting nearby. As we walk around we see a sign which reads, "Sturm's Steaks and Sturgeons." We enter the cafe and near the door, we see Betty Clark, Betty Bechtold and Kathryn Shimmon, society leader, chatting amiably over a cup of Judkins' Java. At the soda-fountain we enjoy a Schultz Sherbert served by the waitresses on roller skates, Gerry Harvey, Jean Ely and Margaret Grover.

We hear the roar of the engines of the Aldridge Aero-flash and rush out on the field to hear Carmen lafelice announcing the arrival of the plane from Washington, D. C. As the plane taxis to a stand-still, the field attendant, Frank Wachic, rushes to fix the steps, and in his wake is Frank Petee, owner of the Petee Airtrails, Inc., who is to greet the president, and the two reporters, John Mills and Joe Scarola of the Willoughby paper, "Bollinger's Blab." The first to alight is Stewardess Marian Bailey and Co-pilot June Edwards. The president steps out of the plane, followed by her ever-present secretary, Dorothy Roberts. Last to alight is Adelbert Ferguson, world famous flyer, who piloted the plane from Washington to Willoughby.

The people are still cheering as the party gets into the Wagner Wagon which is driven by Lester Arndt. We notice the president looks very chic in her ensemble designed by Frances Stillisano.

Arriving at the premiere, we hear Bill Hilty announcing the names of celebrities as they arrive. Autograph hunters throng the entrance. A few familiar names we hear are those of Eileen Brown, a well-known tap dancer of stage and screen, escorted by Hugh Leggat, Indianapolis Speedway racer; Ruth Hinkston, an eccentric dancer, and Paul Lawrence, pitcher with the Willoughby Wallopers, are the next couple to arrive. Mr. and Mrs. Richard Kimmel (nee Dorothy Frost) are followed by Arthur Tatman, prominent New York bachelor, and his three charming companions, Janet Carr, Evelyn Eddy and Edith Gunvalsen.

We purchase our tickets from Eleanor McGonnell in the ticket-booth (trying to earn enough money to go West). As we enter we are greeted by the manager, Arthur Armington and taken to our seat by Marian Stillisano, the usherette. In the orchestra pit we notice several familiar faces: Bob Royer, George Schmidt, Margaret Anderson, Anita Scaglione, and Alfred Shutt.

Class Prophecy

As the house lights dim the Master of Ceremonies, Gerald Daniels, steps out to introduce the picture and stars.

As we sit in our box, we glance around the audience. Some of the familiar faces we see are: Jeanne Cotter, June Merritt, and Irene Swain, former Olympic champions, escorted by Henry Roediger, John Myers and Hector Borrelli, all athletic directors of various sports at high schools. Across the aisle, we see Martha Granger, concert star, and her pianist, Elfrieda Wachic. Seated behind them is Charles Miller, star third baseman for the Willoughby Wallopers, and his wife, the former Martha Burt. Several very business-like young ladies sit together. They are all business women: Joan Gasci, June Ann Laurence, Violet Brown and Grace Decile. In another section we see Elmer Nord, escorting his beautiful models, Helen Cie Chanski, and Helen Crobaugh. Just back from Africa are Jack and Evelyn Boytz McKinnon, two brave missionaries. In another box is Joe Rosplock, Dean of Harvard; Donald Whitney, professor at Harvard, and Gordon MacLennan and Fred Loucks, educational directors. We turn our eyes to the doors to watch last minute arrivals: George Hennicker, basketball coach; William Johnson, proprietor of a large hunting lodge; Andrew Klima, cabinet maker; Ruth Lamos, hostess for Willoughby Restaurant; Joyce MacLennan, social service worker; Ruth Phillips, Home Economics teacher; Howard Ritter, playboy; Minnie Rider, international spy; Walter Weed, president of Farmer's League; George Simonson, basketball coach; Louise Wolkersdorfer, founder of a Girls' school.

But now the epic title is flashed on the screen. In the lists of people associated with the picture which follows we note with pleasure the names of Vivian Clapp and Dorothy Fatica, who designed the costumes; Annabel Corron, who loaned her Kentucky thoroughbreds for the making of the Civil War scenes; John Delsantro, to whom was given the task of title and effects designing, and Mary Morgan, the noted milliner. Eleanor Westerberg arranged the hair-dress of the stars.

And now the premiere is over, and a short feature showing the work of the Coast Guard is shown. Here we see newly commissioned Captain Cyril Edwards on the deck of his cruiser, "Greyhound."

On the way out the efficient secretary, Alice Klingensmith, takes our names and addresses for the mailing list of Stafford & Seaholm, mail order house of fine sporting equipment and red flannel underwear (new style). Jack has just quit a job as coach at W. H. S.

And now the busy day is over and we turn our weary heads towards the grandiloquent Hotel Charske to accept a well-earned rest, but we do not get it immediately because after registering with girl Bud Stebbins we notice a bridge game is in progress and we must go over to talk to Betty Larson, Ester Conley, who tell us that Barbara Smith and Laura Jane Wallace are both working for Alfred Horton, the lexicographer. They also told us that Jack Nason and Norman Novak are working with Stanley Brain on a new plan to advertise Willoughby.

Class of 1940

THE JUNIOR CLASS, with Miss Fickes, Mr. Winkler, Mr. Shankland, and Mr. Jenkins as its sponsors, will continue as they always have along the road to success.

Leading the activities of the Junior Class were Gilbert Meinke, president; Jack Vohlers, vice-president, and Emily Caster, secretary-treasurer.

In order that expenses of the Junior-Senior Prom could be met, the class sponsored several successful dances, and one division of the class sponsored the moving picture "Magnificent Obsession".

Various members of the class have joined the Hi-Y, the Friendship Club, the Scholarship Club, and other groups of equal importance.

Next year we will see the juniors successfully filling the places of the departed seniors.



JUNIOR CLASS HISTORY

Left—

Harold Arndt
Quiet
Tom Boggs
Witty
Lillian Bozeglov
Athletic

Lee Bidlingmayer
Archer
Glenn Booker
Shorty
Bob Brown
Noisy

Charlotte Call
Peppy

Bruce Bixel
Carefree
Stanley Boor
Getaroundability
Bruce Brown
Also noisy

Right—

Helen Bizjak
Good natured
Mary Ellen Brillinger
Go-getter
Quata Burke
Flirtatious

Class of 1940



Emily Caster—*Petite*
Marjorie Camp—*Vivacious*
Eileen Claywell—*Seductive*



Francis Cummings—*Bashful*
Ruth Cuthbertson—*Studious*
Lillian Daniels—*Musical*



Winifred Dann—*Pleasant*
Benny Demilto—*Independent*
Jane Duff—*Dainty*



Margaret Durk—*Calm*
Annamae Eminger—*Loquacious*
Harold Feenstra—*Unassuming*



Robert Feenstra—*Dreamy*
Ildemor Fields—*Willing*
Joseph Florio—*Fencer*



Bernice Funk—*Friendly*
Frances Gallagher—*Irish*
William Garrett—*Humorous*



Frank Gill—*Resourceful*
Donald Graham—*Nonchalant*
Nat Gillette—*Fiddling*



Victoria Glavec—*Conversant*
Johanna Gockel—*Chic*
Dorothy Harrold—*Reserved*

Class of 1940



George Hauptkorn—*Silent*
Betty Hayden—*Bashful* *Ugly*
Jean Hayden—*Literary*



Dorothy Hayward—*Intelligent*
Betty Heitzman—*Active*
Robert Heitzman—*Jovial*



Ruth Henderson—*Pleasant*
Pat Hendricks—*Good-natured*
Richard Johnson—*Diligent*



Betty Jones—*Studious*
Phyllis Jones—*Redhead*
Bud Jordan—*Witty*



Harriet Kirk—*Garrulous*
Mildred Knouff—*Peppy*
Frances Koci—*Cute*



Art Kooyman—*Rural*
Agnes Kostrab—*Romantic*
Charlotte Kruger—*Shy*



Howard Lange—*Giddy*
Allan Langstaff—*Talented*
Henry Leonello—*Silent*



Betty Lette—*Reticent*
Kenneth Loyd—*Speedy*
Dick Mannino—*Shorty*

Class of 1940



Mike Marino—*Gangling*
Ed Marquardt—*Unassuming*
Robert Marquardt—*Also Unassuming*

Audrey Mason—*Perpetual motion*
Freida McClelland—*Neat*
Bob McFarland—*Rhythmic Jitterbug*

Flora McGurer—*Enthusiastic*
Gilbert Meinke—*Jocund*
Patricia Meil—*Sweet*

Albert Mele—*Sailor*
Doris Metzung—*Composed*
William Meyers—*A tease*

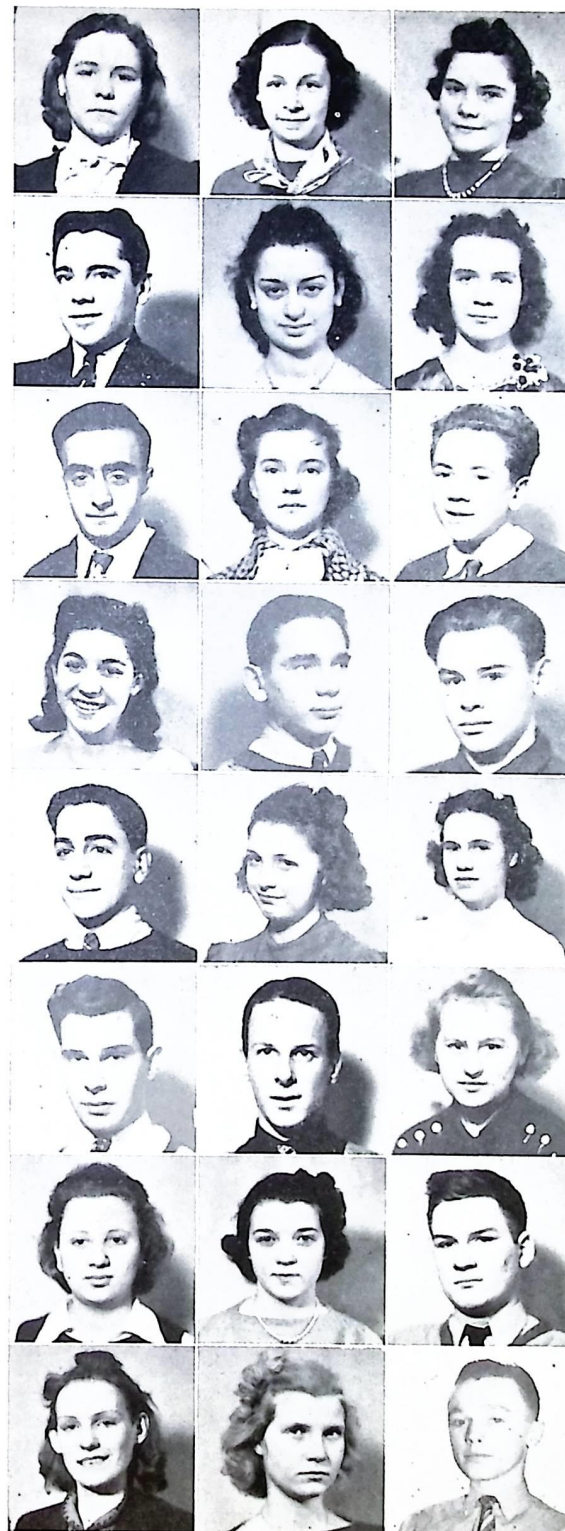
Robert Mitchell—*Mischievous*
Betty Mohun—*Titian*
Ida Moritz—*Coquettish*

Milton Murphy—*Amusing*
Evelyn Nicholson—*Careful*
Ina Parker—*Tranquil*

Virginia Perrin—*Sophisticated*
Myron Pfeiffer—*Tiny*
William Phillips—*Healthy*

Dale Pickard—*Domestic*
Tom Quinn—*Cartoonist*
Jay Reeve—*Jolly*

Class of 1940



Dorothy Rider—*Chatty*
Catherine Riehl—*Genial*
Jean Robinson—*Pert*

John Rosplock—*Carefree*
Dorothea Rossen—*Dramatic*
Betty Saxton—*Faithful*

Tony Scarola—*Quiet*
Marion Schultz—*Reliable*
Victor Schneider—*Naturalist*

Betty Sheridan—*Affable*
Dick Schrock—*Curley*
Homuth Sideward—*Shy*

Anthony Solomone—*Musical*
Jean Smith—*Artistic*
Claire Sprackling—*Songbird*

Robert Stollard—*Obliging*
Russell Sulzmann—*Quiet*
Mary Svec—*Thoughtful*

Margaret Tough—*Baton-twirler*
Thelma Vickroy—*Buoyant*
Jack Vohlers—*Iron man*

Pauline Witherite—*Fluttery*
June Wood—*Laconic*
Stewart Armington—*Jittery*

Class of 1940



William Armington—*Handsome*
Doris Bock—*Silent*
Melvin Call—*Bashful*

Helen Clifford—*Congenial*
Pauline Curtiss—*Dependable*
Robert Disbro—*Friendly*

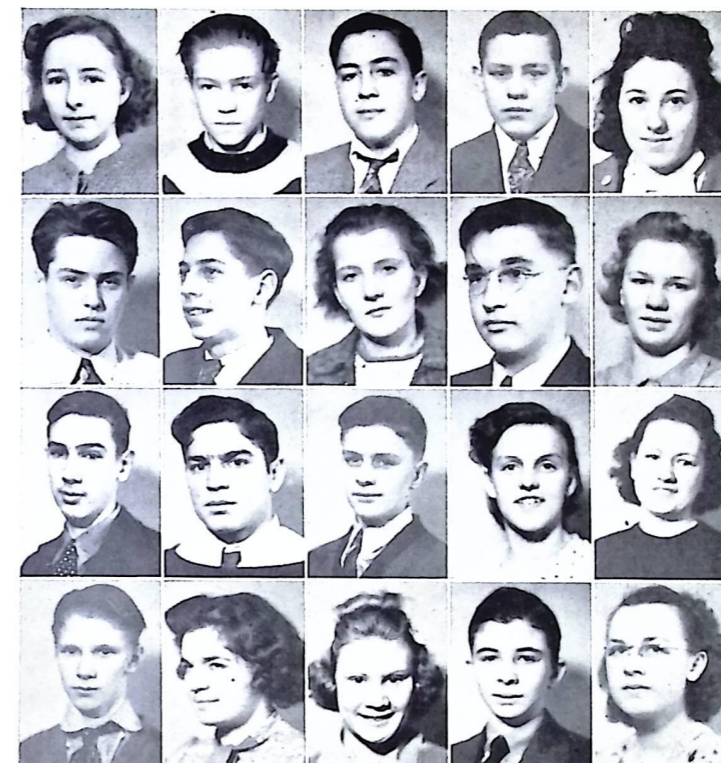
Patricia Doyle—*Carefree*
Jack England—*Inventive*
Mike Fernolend—*Confidential*

Nat Goodwin—*Musical*
Milton Heinz—*Tardy*
Jack Hippler—*Energetic*

Ed Marquardt—*Unassuming*
James McCormick—*Gay*
John Polly—*Debonair*

George Noggy—*Athletic*
Jeanne Sherman—*Piquant*
George Shaeffer—*Speedy*

Class of 1941



TOP ROW
Marjorie Abbott
Walter Allyn
Bob Angus
Raymond Bacon
Rose Basta

SECOND ROW
Bob Bauer
Joe Bechtol
Frances Beckwith
Jack Benjamin
Miriam Blecher

THIRD ROW
Robert Bornemann
Mike Borrelli
Blaine Bolton
Irene Boytz
Mary Brady

BOTTOM ROW
Richard Brain
Ruth Briggs
Jenny Brooks
Robert Burke
Pauline Burroughs

SOPHOMORE CLASS HISTORY

IN THE fall of 1937, one hundred and eighty-five students entered W.H.S., and started their four years of hard labor.

By the time they had become sophomores, they no longer felt like "greenies" but rather like upper-classmen.

The class officers, elected at the beginning of this year were: Jack McGarry, president; William Petrovic, vice-president, and Frances Knouff, secretary-treasurer.

Several have joined the Dramatic Club, and a large number of boys, the Hi-Y Club.

The sponsors, Mrs. Carroll, Miss Buyer, Miss Broderick, and Mr. Wendorf are quite proud of their class and feel that they will become the leading class of the school.

Class of 1941



Harry Calloway
Connie Campbell
Ted Carosello
Doris Carr



Ruth Charske
Arlene Clayton
Jule Claywell
Paul Collier



Marie Cornwall
Bill Coughlin
Bob Coughlin
Lee Crihfield



Betty Crowley
James Davis
Kathryn Dietz
Norrene Durant



Mae Eckart
John Ely
Gordon Englebret
Concettina Fatica



Mischino Fatica
Homer Ferguson
Delores Fletcher
Hugh Freeman



Frances Funk
Marie Garrison
Marjorie Gear
Wanda Glazer



Dale Goodrich
Jane Goodrich
Margaret Goodwin
Gloria Jean Granger

Class of 1941



Werner Hahs
Betty Hamilton
Bob Harrison
Robert Hawkins



Milton Heinz
John Henderson
James Hesketh
James Hilty



Annabel Hodgerney
Hester Houser
Lorna Howard
Byron Hunsicker



Helen Irwin
Jane Jacoby
Robert James
Bill Jepson



Angus Johnson
Delores Johnson
Lloyd Jones
Ruth Keeper



Mary Kruger
Clark Lape
Karl Lemmerman
Charles Lemr



Evelyn Long
Delores Lutman
Charles Marble
Peggy McCann



Warner McFadden
Jack McGarry
Roger McKain
Robert Meil

Class of 1941



Marion Mills
Doris Myrtle
Eddie Nichols
David Ogilvie



Doris O'Brien
Marie O'Brien
Ethel Pahlke
Doris Parker



Louis Peters
William Petrovic
Doug Phillips
Wesley Pignolet



Mary Prokop
Janice Raus
William Reno
Paula Rettig



William Robinson
Tom Roediger
Betty Rowland
Charles Sand



Edward Sand
Bill Sandman
Clifford Saxton
Marjorie Saxton



George Schminky
Walter Sigsbey
Tony Silvaroli
Marion Smith



Regina Smith
Wallace Smith
Herbert Somnitz
Bob Stoiber

Class of 1941



Merle Stafford
Rita Streacker
Leslie Swan
Janice Sulzmann



Carlyle Sulzer
Ruth Sulzer
Dorothy Tatman
George Tegner



Jane Todd
Rene VanLacke
Clara Venditti
Betty Webster



Ruth Welch
Wayne Wells
Willis Wells
Roy Wood



Margaret Woods
Maxine Woods
Jacqueline Young
David Dennison



Carlton Burkholder
Jean Clark
Hadley Kline
Mike Borelli



Milton Heinz
Richard Janos
Mary Jones
Jonathon Dunn



Frances Knouff
John Langel
Charles Marble
Robert Marquardt

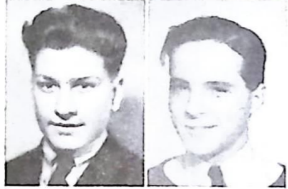
Class of 1941



Barbie Walker
William Wright



William Terrill
James Scanlon



Ralph Royer
Alan Root



Ella Jean Peterson
Robert Meil



Class of 1942



TOP ROW

Louis Angelotti
Esther Arndt
Donald Bard
Helen Barnett
John Bistarky

SECOND ROW

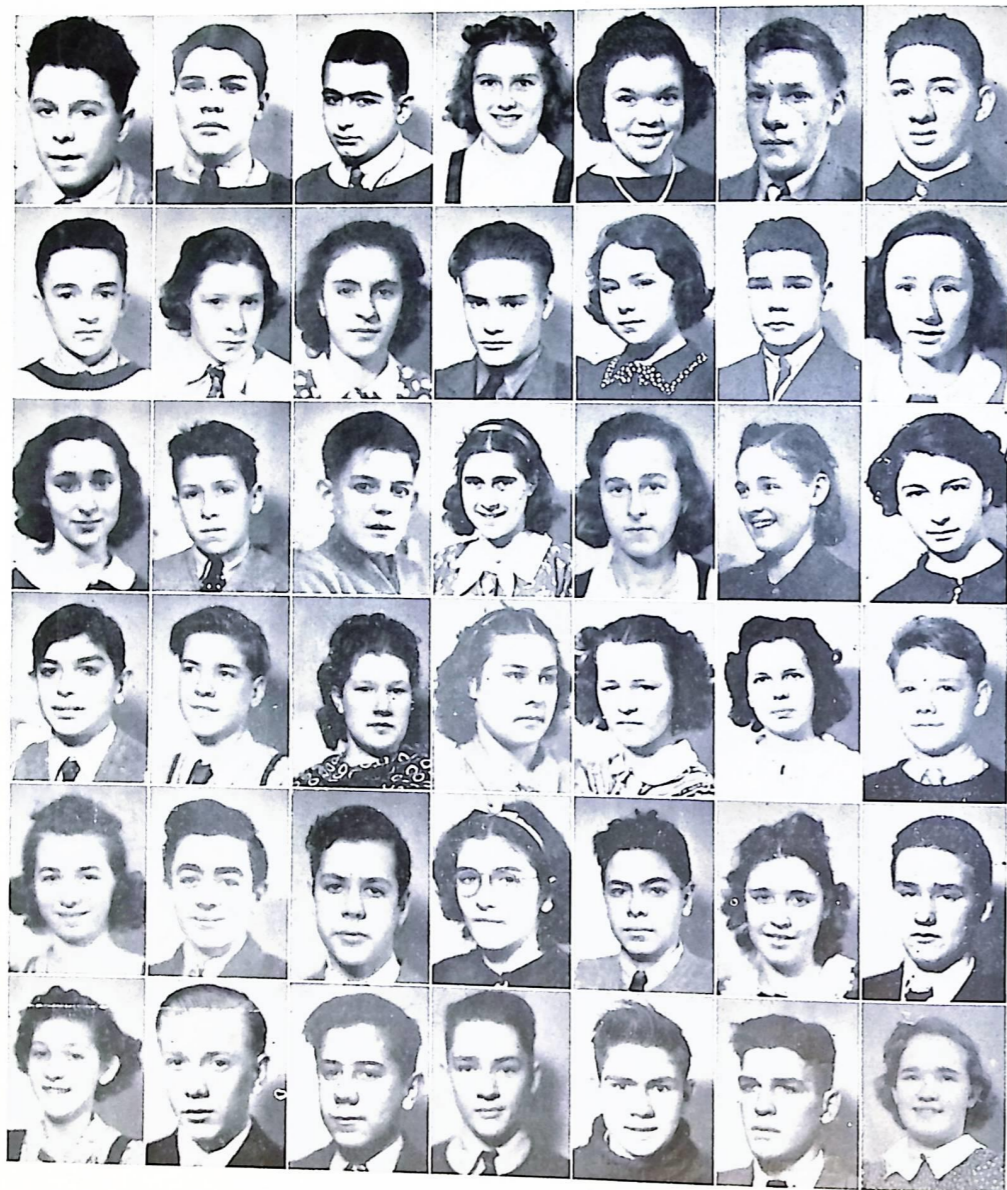
Vernon Barnes
Barbara Bolton
Cecilia Borelli
Leroy Brown
David Buckles

FRESHMAN CLASS HISTORY

IN SEPTEMBER, 1938, a group of approximately 185 Freshmen entered Willoughby Union High School. By December of the same year, these students had become accustomed to the whys and wherefores of the school. Then came a happy event, the first real vacation. As time went on the Freshman class proved its scholastic ability. In April came the first examinations of the State, but they'll soon get used to those.

With Mr. Lake, Miss Knight, Mr. Helm, and Mrs. Boley as sponsors, we can expect big things from this class.

Class of 1942



Bob Burden, Gerald Calloway, Dave Carosello, Evelyn Carl, Mae Carmichael, Vernon Colburn, George Bannerman.

Jack Clair, Lucille Colburn, Helen Cukor, Frank Curtiss, Lucille Cuthbertson, Dennis Daniels, Betty Ann Deahl.

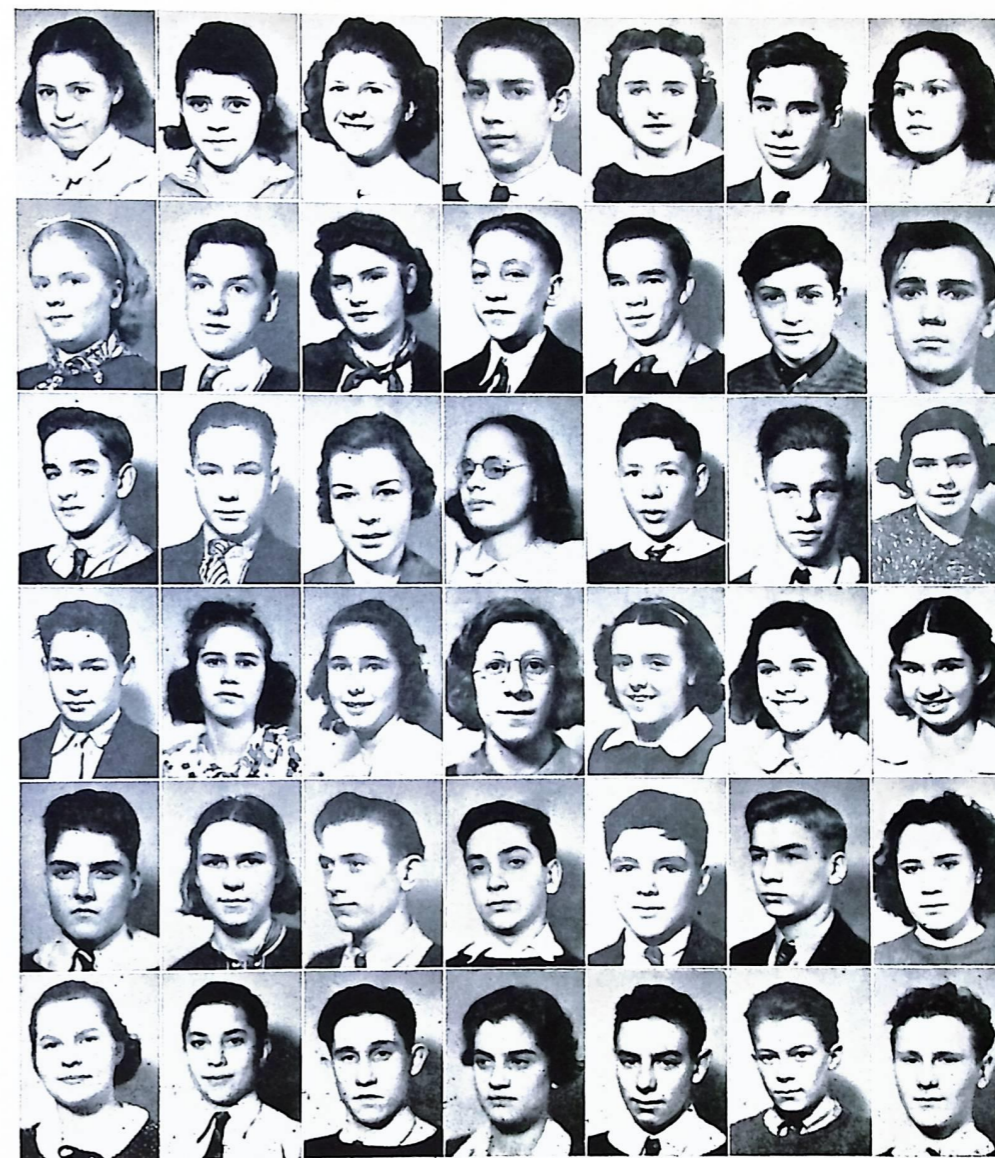
Carole Decile, Jack Boor, William Doyle, Evelyn Duncan, Evelyn Edwards, Dorothy Fairley, Delphine Fatica.

Anthony Fatica, Frank Ferguson, Betty Flynn, Norma Flynn, Jean Foley, Mildred Foley, Fred Forsythe.

Theresa Frazza, Tony Frazza, George Gasci, Dorothy Gehlfuss, Eugene Gehri, Alice Gibson, Dale Goodrich.

Gwyneth Goodwin, Harry Goodyear, Joe Horvath, Lawrence Gregory, Henry Groathe, Sinclair Hague, Margaret Havens.

Class of 1942



Helen Hayward, Rita Hearn, Marian Heath, Emerson Heinz, Joan Henderson, Charles Herendeen, Helen Hilts.

June Hoffman, Jack Holden, Arlene Horrocks, Roy Hulzman, Wilson Harvey, Milon Janezic, Stewart Jarvis.

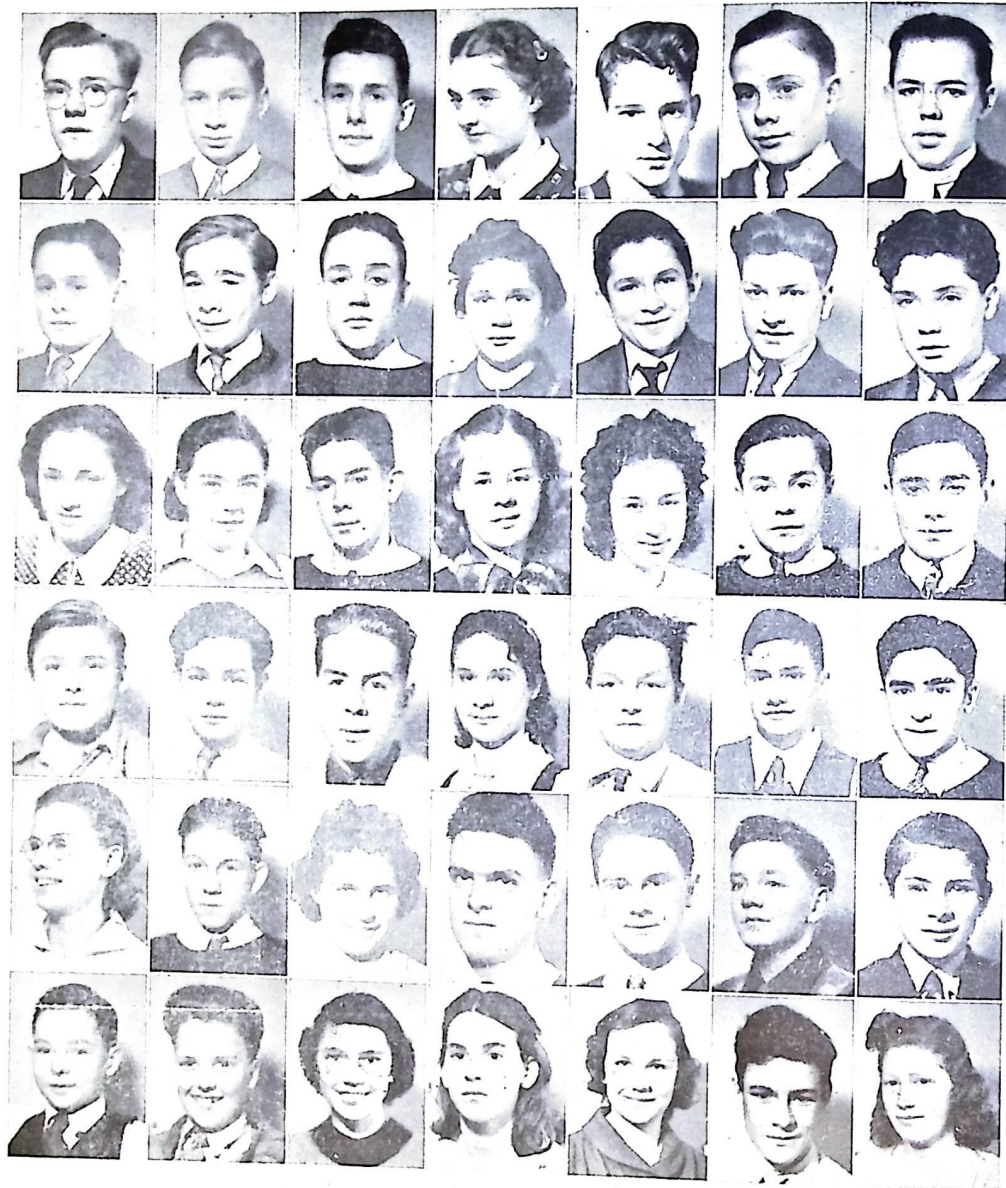
William Kennedy, George Klco, Mary Kostrab, Dorothy Kruger, Richard Kruger, Lloyd Lamos, Yvonne Lemr.

William Lesler, Jessica Lindsley, Geraldine Loucks, Vesta Lozier, Jessie Mae Marble, Marjorie Mason, Jane Matthews.

Jim McArthur, Beatrice McClelland, Tom McGonnell, Marvin Mentser, Donald Metzung, Jim Myers, Emma Mitchell.

Betty Mizerak, Joe Mizerak, James Myers, Doris Neil, David Nellies, Jack O'Brien, Tom O'Brien.

Class of 1942



Thomas Palinkas, Karl Paul, Jack Lee Peterson, Marie Petrovic, Don Powers, Jim Robinson, Robert Reed.

Robert Reidl, Edward Rider, John Roe, Frances Rolph, Bob Rosplock, Ralph Royer, John Ryan.

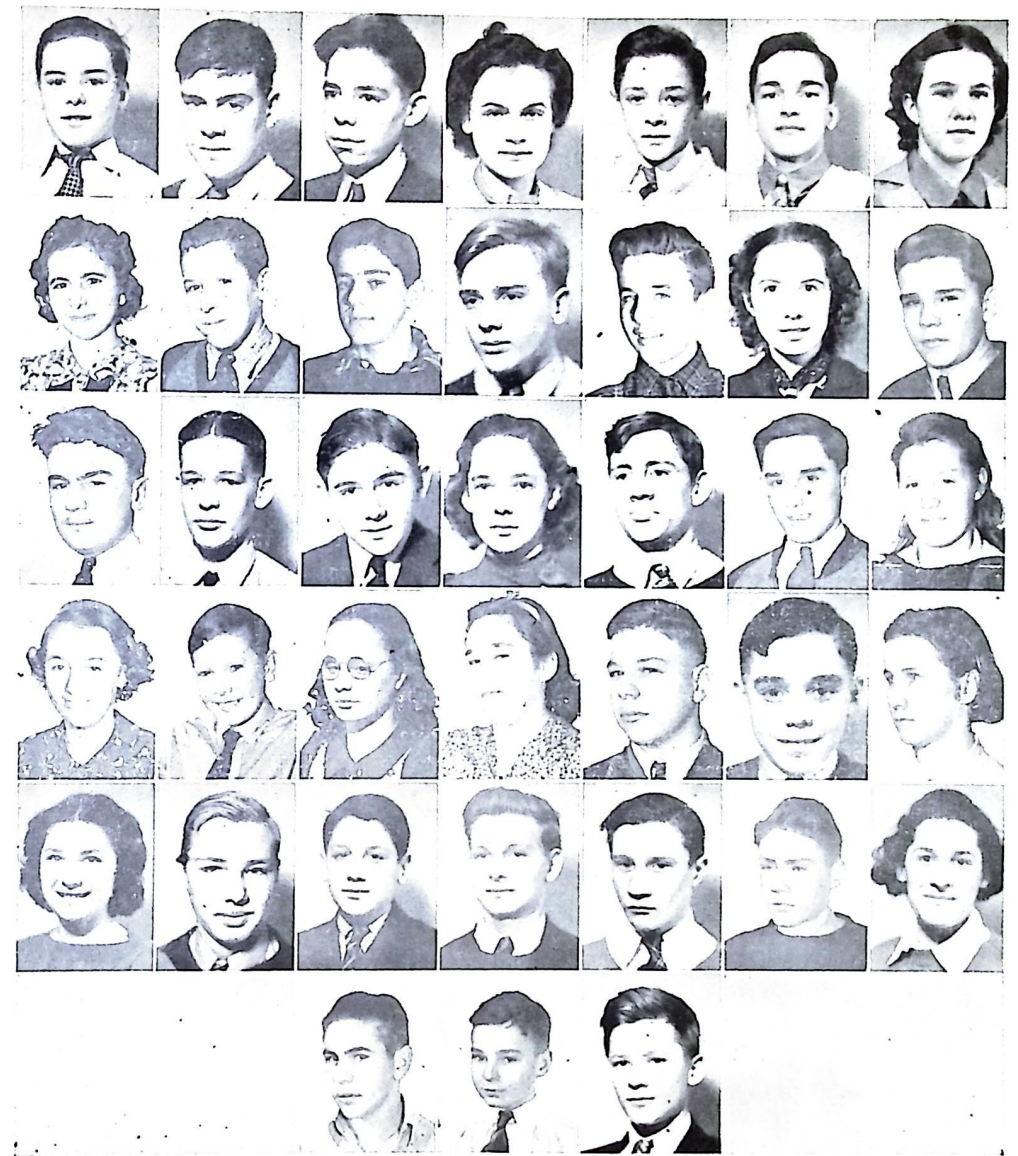
Margaret Scaglione, Evelyn Schaerr, James Schomaker, Marjorie Schomaker, Betty Schwartz, Clifford Servais, Harold Shaw.

Ralph Sidewand, Edward Sigsbey, Robert Smith, Dorothy Spears, Richard Stewart, Robert Stewart, Angelo Stillisano.

Muriel Swain, Virgil Terrill, Esther Thompson, Bob Thompson, Robert Tittle, George Trimmer, Joseph Vohlers.

Donald Wallace, Ted Wallace, Marjorie Whitehouse, Betty Wilcox, Beverly Wilcox, Ted Wilcox, Marjorie Wilcox.

Class of 1942



William Wilde, Dale Witcraft, Harold Witherite, Elsie Werman, William Wright, William Zimmer, Alice Anderson.

Mary Rose Angelotti, Jack Boor, Gene Borrelli, Donald Crawford, Jack Coleman, Eleanor Cozens, Dennis Daniels.

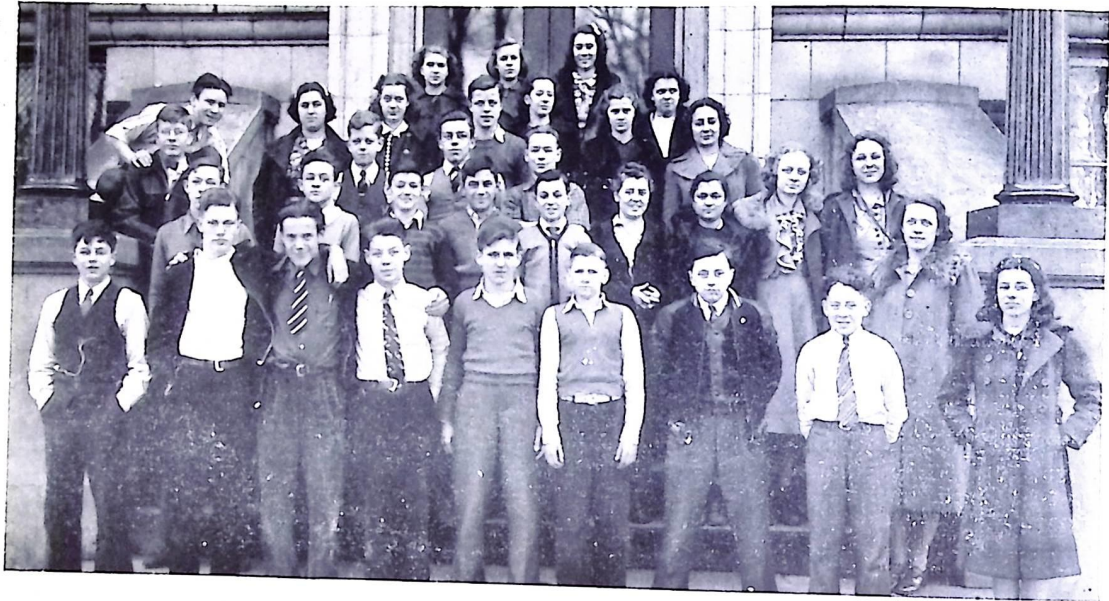
Clifford Everett, Wade Fussner, James Green, Mildred Green, Frank Hengesbach, Eddie Hershey, Martha Klingensmith.

Eleanor Koren, William Kral, Dorothy Kruger, Ellen Lette, William Long, Donald MacLennan, Evelyn Nicholson.

Beverly Osterland, George Pallak, Douglas Peterson, William Phillips, James Ramsey, Dick Simonson, Lucille Tagliamonte.

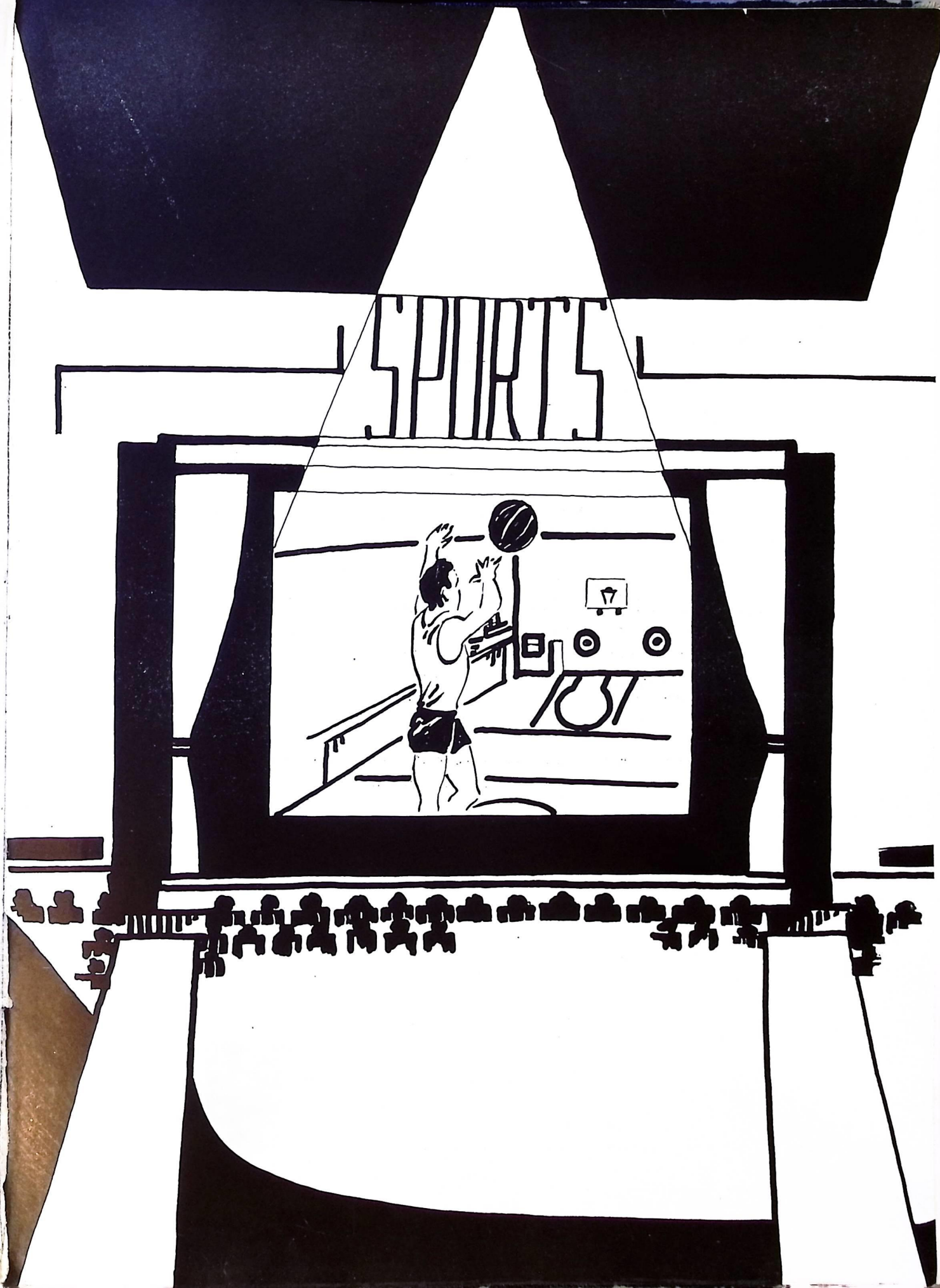
Raymond Tkautz, Donald Wallace, Howard Wawrenek.

9B Group



AT THE beginning of the second semester the enrollment of the high school was augmented by the arrival from Memorial Junior of a class of 33 new Freshmen.

We present them to you now. They are: Buddy LaGruth, Kenneth Totten, Doug Douglas, Raymond Buck, Louis Pallak, James Merritt, Howard Simon, Joseph Brunson, Margaret Davidson, Helen Rogers, Phyllis Huthmacher, Marion Rugnetti, Betty Collins, Louis Paschull, Nicholas May, Joseph DeMillo, Harvey Sigsbey, Raymond Ray, George Rose, Robert Ward, Betty Freeman, Harry Goodyear, Forest Southwick, Raymond Lesler, Anna Ginevra, Nadine Baker, Virginia Granger, Marion Myers, Robert Jepson, Edna Jacoby, June Conley, Violet Southall, and Katherine McGonnell. They are here pictured with Mrs. Baldwin



Football



WITH their best team in years the Willoughby Rangers, under Coach Jean Smith, closed the 1938 season with six wins, three losses, and one tie.

For the first time in history a Willoughby team played their home games at night. The lights at Lincoln Field were made possible through the cooperation of the Chamber of Commerce and Willoughby business men. The Ranger-Wickliffe game inaugurated the lights.

Jack Stafford, Ranger guard, was placed on the honorary Lake Shore League team while Richard Kimmel and Donald Strum received places on the second team.



Football



Willoughby 27; Mayfield 0

Unloosening a deadly aerial attack the Rangers rode roughshod over the hapless Mayfieldites. Ranger passes scored three touchdowns and accounted for the other one.



Willoughby 7; Brush 7

Denied a victory in the closing seconds because the game ended all too soon the Rangers had to be content with a hard-fought tie. Willoughby's passing attack accounted for its lone touchdown in the second period.



Willoughby 41; Wickliffe 2

Proving too powerful for a lighter Wickliffe team the Rangers scored at will and notched up an overwhelming victory. Second and third string Rangers saw much action.



Football

Willoughby 13; Harbor 7

Because of Dick Kimmel's 103 yard run the Rangers were able to come from behind and defeat the Mariners. The rangy right end also accounted for the other Willoughby tally.



Willoughby 7; Painesville 20

Faltering after piling up a seven point lead the Rangers let up and Painesville pierced its defense for three touchdowns.



Willoughby 13; Fairport 0

Scoring twice in the last five minutes as a result of the old sleeper play and an intercepted pass the Rangers chalked up their second Lake Shore triumph.



Willoughby 0; Conneaut 33

Succumbing to a powerful Trojan attack the Rangers were smothered by a 33-0 score. After the first few minutes the Rangers were no match for the Trojans.



Willoughby 0; Ashtabula 6

After fighting the 1938 league champions to a standstill the Rangers' pass defense crumbled and Ashtabula scored in the last three minutes. The rugged Ranger line held the vaunted Panther running attack in check all through the game.



Willoughby 14; Mentor 0

Playing on a hot, sultry day the highly favored Rangers could score but twice against a fighting Mentor team. Willoughby rolled up 240 yards while scoring their two touchdowns.



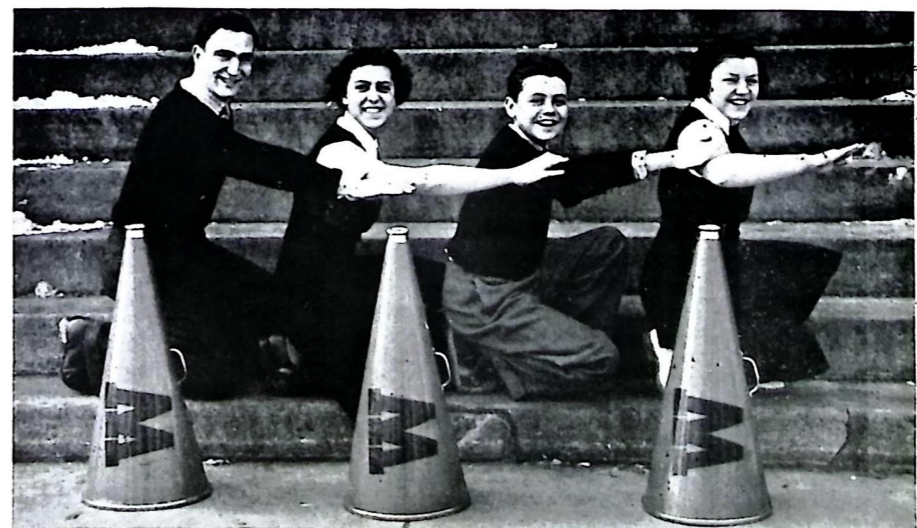
Willoughby 19; Geneva 0

After being held scoreless during the first half the Rangers broke loose and scored three times in the third period. The Ranger line again distinguished itself by its excellent play.

Football



Cheer Leaders



Basketball



PLAYING their first season under Coach Ray Singer, who returned to the high school coaching staff after a few years' absence, the Rangers closed the 1938-1939 season with nine victories and nine defeats. Although their record was not so spectacular the Rangers played better ball than they have in recent years.

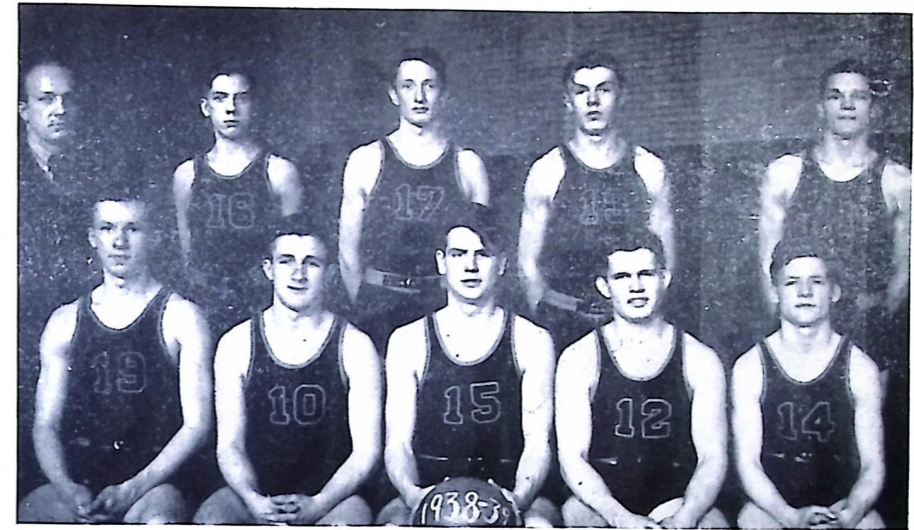
The Rangers copped but four wins in league play and as a result finished far down in league standings.

Donald Sturm led the team in scoring with 145 points. In league games he tallied 86 points.

Departing varsity men are: Don Sturm, George Hennicker, Winton Axford, Richard Kimmel, Jack Stafford, Charles Miller, Robert Royer, Gerald Daniels, and George Simonson.

The Willoughby Reserves, undefeated league champions, captured sixteen of their eighteen games. They sandwiched a fourteen-game winning streak between their only two defeats.

Basketball



1938-1939 SCHEDULE

Willoughby	19.....	Euclid Central	14
Willoughby	37.....	Chagrin Falls	18
Willoughby	40.....	Mayfield	21
Willoughby	15.....	Fairport	31
Willoughby	31.....	Alumni	33
Willoughby	24.....	Geneva	19
Willoughby	25.....	Painesville	29
Willoughby	35.....	Ashtabula Harbor	27
Willoughby	14.....	Ashtabula	32
Willoughby	34.....	Kirtland	33
Willoughby	27.....	Fairport	36
Willoughby	32.....	Conneaut	19
Willoughby	28.....	Geneva	20
Willoughby	37.....	Painesville	41
Willoughby	24.....	Conneaut	27
Willoughby	23.....	Ashtabula Harbor	27
Willoughby	24.....	Mentor	16
Willoughby	22.....	Ashtabula	41

Track



CLIMAXING a very successful campaign by tying for the Lake Shore League title, the Willoughby Rangers closed in 1938 perhaps the greatest track season in Willoughby history.

The Rangers overwhelmingly defeated Mayfield, Euclid Shore, Brush, Painesville, and Mentor. The only demerit against the Rangers was a third place in the Mentor Relays.

Leading the Rangers was Bob Sulzmann, who besides scoring well over 100 points, broke two Lake Shore League records and placed third in the high hurdles in the State meet at Columbus. Sulzmann's time in the Lake Shore high hurdles was 15.4 second and in the low hurdles 25 seconds.

Track prospects for 1939 seem bright for the Rangers with ten lettermen back. The lettermen are Jack Bollinger, John Delsantro, Ralph Green, Kenneth Lloyd, Hugh Leggat, Joe Rosplock, Richard Kimmel, George Simonson, Arnold Southall, and Walter Woods who has held the league mile title for two years.

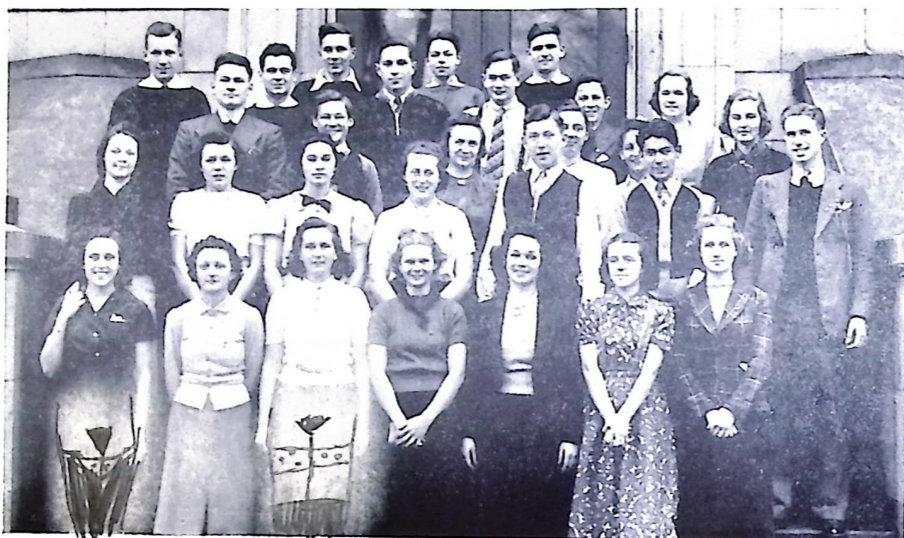
A large number of meets have been scheduled this year and of these, several will be held at Lincoln Field.

The 1939 edition of the Rangers, barring accidents, promises to be as good as the 1938 team. The Rangers lost good men in Sulzmann, Southwick, and Alvin Post, but Coach Jean Smith believes they can be adequately replaced by the returning lettermen and other promising recruits.





Student Council



First row—D. Parker, Grady, Edwards, Winegar, Knouff, Marble, Meil.
 Second row—Daniels, I. Parker, Bechtold, Wolkersdorfer, Lange, Petec—vice president, and Bollinger.
 Third row—Vohlers, Stafford, Mrs. Blessing, Hengesbach, Clayton, Todd.
 Fourth row—Kimmel, J. Rosplock—president, Tatman, McGarry, B. Rosplock, Havens.
 Last row—Meinke, Gehri, and Lemr.

THE Student Council of Willoughby High School is an organization which has become a more and more influential and beneficial factor in our school.

The council is an organization composed of representatives from all of the home rooms of the school, the presidents of the Sophomore, Junior and Senior classes, the officers of the Hi-Y and Friendship clubs and the faculty adviser. At present the council is organized on the committee basis. Under this system, all the members of the organization are divided into seven separate committees.

The first and most important committee is the Executive Committee which consists of the five officers of the council, the presidents of the classes, and the presidents of the Hi-Y and Friendship clubs. This committee initiates the ideas and assigns each task to the appropriate committee.

The other six committees are: the Publicity Committee which advertises the organization's activities and meetings by posters and newspaper articles; the Campaign Committee which conducts beneficial and informative campaigns throughout the school; the Research Committee which works on all necessary research required; the Service Committee which takes over all matters submitted to it by the office, other organizations, or the council itself; the Finance Committee which handles all money expended and collected by the council, and which must formulate plans by which additional funds may be secured; and last, the Welfare Committee which has charge of any specific thing which can help the students, the faculty, and the school to make school life more pleasant.

Meetings of the council are held each Monday during the sixth period. During the 1938-1939 school year the Student Council has accomplished a number of things which have bettered the school considerably among which was the installation of the Hall Guard System.

Hi-Y Club



First row—Petec, Ritter, Hershey, Bartlett, Mitchell, Southall, Armington.
 Second row—Daniels, Sturm, Stafford, Tatman, Haker, Kimmel.
 Third row—Vohlers, Meinke, Mills, Davis, Myers, Schmidt.
 Fourth row—Stamberger, Wagner, Seaholm, Aldridge.
 Last row—Leggat, Rosplock, Bollinger, Mr. Barker, Hilty, Bechtol, Delsantro.

THE purpose of the Willoughby Hi-Y club is to "create, maintain, and establish throughout the school and community, a high standard of Christian character."

Under the leadership of Mr. Wilby Barker as faculty adviser, the club provides a very adequate and pleasant means of betterment.

The club meets regularly each Monday night and holds a business meeting combining discussions and speakers. A part of the club treasury funds was provided by managing a refreshment stand at the home football games in the athletic field and by undertaking a check-room at the basket ball games.

The social calendar of the club contains a great deal every year, dances, spaghetti feeds, Mother-Son and Father-Son banquets. This is usually topped by a dinner-dance, held at the end of the school year.

Each year the club sends two representatives to a Hi-Y camp in Ohio. This is supplemented by various Hi-Y conferences elsewhere throughout the year.

Joseph Rosplock was the president of the group this year, and Jack Bollinger handled the club's coffers.

Friendship Club



Members of the Friendship Club Cabinet who are in complete charge of the club's activities are—reading from left to right: Joyce MacLennan, Mary Ellen Brillinger, Ruth Phillips, Betty Clark, Edith Gunvalsen, Miss A. Knight, Alice Hengesbach, president; Miss E. Buyer, Lois Winegar, Emily Caster, Ester Conley, Katherine Henry, and June Edwards.

Purpose: "To Face Life Squarely."

Slogan: "To Find and Give the Best."

Code: "As a Girl Reserve I will try to be

Gracious in manner
 Impartial in judgment
 Ready for service
 Loyal to friends
 Reaching towards the best
 Earnest in purpose
 Seeing the beautiful
 Eager for knowledge
 Reverent to God
 Victorious over self
 Ever dependable
 Sincere at all times

THE Friendship Club is a Girl Reserve organization which is a branch of the Young Women's Christian Association.

The club is open to all girls of the school who wish to take part. Its activities include one meeting each month and one social event each month.

The programs are arranged to be instructive as well as entertaining. Each girl has opportunities to work on committees and programs and thereby the club helps to develop leadership ability.

Friendship Club

The first annual event is the impressive candlelight service at which the new members are formally taken into the club after a day of informal initiation.

The first program of this school year was devoted to a Hobby Lobby program led by Miss Buyer, one of our advisers. For the Christmas meeting our speaker gave a demonstrated lecture on "How to Wrap Gifts Attractively." A later meeting featured a talk about her doll collection by one of the Y. W. C. A. leaders of Cleveland. The program just before our annual dance was devoted to the topic of "Etiquette."

Another object of the club is to perform deeds of service. This year five Christmas baskets and trees were prepared and delivered by members of the club. Other girls helped at Christmas by selling the Tuberculosis seals.

The parties included a Northwest Territory Party, a Christmas Caroling Party, an Advertising Party and a Backward Party. Other social events enjoyed by members of the club were the annual Father-Daughter Banquet in February, the Mother-Daughter Tea following the service of installation of new officers in May, and the annual dance in April when the girls entertain the boys.

The last activity of the year is the picnic. At this affair the newly elected officers have full charge.

The enthusiasm of the girls in carrying out programs and social events is evidence that the club meets the needs of the girls growing and expanding into new friendly relation and adventure.



Boy's "W" Club



DUE to the efforts of Jean P. Smith, athletic director of Willoughby High School, the Boys' "W" club which has long been dormant in the school was revived at the beginning of the 1938-1939 school year.

In order for a new member to qualify for the club he must first win his athletic letter and then subject himself to the roughhouse initiation which follows.

At present there are 27 members of the club. Eight of this group became members immediately following the football campaign.

The officers of the "W" club are all seniors and all take part in more than one major sport. They not only played football but also helped to bring a track championship to Willoughby in the 1939 season.

The officers are:

President.....	JOHN DELSANTRO
Vice President.....	HUGH LEGGAT
Secretary.....	RICHARD KIMMEL
Treasurer.....	JACK STAFFORD

Some members, including John Delsantro and Hugh Leggat, took part in the Arena Relays, winning a first place in the half-mile relay and placing in other events.

Many of the members take part in two and three sports and some have won letters in two sports, but Richard Kimmel is the only athlete to have won his award in three major sports.

Many of the members are seniors and will be leaving in June, but in spite of this there are enough to form the nucleus of a new club next fall.

The following are members this year:

John Delsantro, Richard Kimmel, Jack Stafford, Hugh Leggat, Arnold Southall, Joe Rosplock, Charles Lemr, Robert Ziegler, Winton Axford, Hector Borelli, Robert Miel, Frank Wachcic, Jack Vohlers, Arthur Tatman, Gilbert Meinke, Charles Miller, Donald Sturm, George Hennicker, Ralph Green, Kenneth Lloyd, Robert Mitchell, and Henry Roediger.

Girl's "W" Club

EARLY in 1934 a small group of girl athletes met to discuss the organization of a club that would help to direct the athletic program for girls. This meeting resulted in the formation of the "W" Club as a part of the Girls' Physical Education Department under the direction of Miss Ethel Spaller.

The aim and purpose of the club is to further interest in sports, to foster good sportsmanship, and to encourage a feeling of good fellowship among the girls of the school. They also aim to inspire the athletic leaders of the school to attain a physical, mental, and social ideal; to urge these leaders to develop and use their energies in beneficial channels and to train girls to coach, referee, and take charge of groups.

Membership is open to all girls within the school. Eligibility depends upon a desire to join and a willingness to work to meet the requirements of 250 points a year. These points are made by participation in sports such as soccer, baseball, basketball, volleyball, hiking, archery, badminton, shuffleboard, ping pong, cycling, skiing, riding, and skating. A white suit and an orange "W" with bars to designate the number of membership years, is awarded to each girl accepted into the club.

The group now consists of 16 girls and is an inseparable part of the school regime. Dues are twenty-five cents a semester and a form of entertainment is usually planned each month. The girls have definite assignments such as assisting in class work and acting as a governing body for the intra-mural activities.

Interest in sports is sustained throughout the year; all girls have the same training, the same fun and the same chance to earn a letter.

President.....	JEANNE COTTER
Vice President.....	JUNE MERRITT
Sec'y-Treasurer.....	LOIS WINEGAR



First row—Martha Burt, Lois Winegar, Lillian Bozeglov, Jeanne Cotter, Nancy Venditti, Joyce MacLennan.
 Second row—Mary Ellen Brillinger, Edith Gunvalsen, Frances Stillisano, Irene Swain, Audrey Mason.
 Third row—Anne Thurman, Betty Heitzman, Miss E. Spaller, Violet Brown, June Merritt.

"Lens" Staff



EARLY in November there was born an idea—Willoughby wanted an annual—after 17 years.

The first work was an intensive circulation campaign under Betty Clark, her assistant, Jack Stafford, and an able group of workers.

Carmen Iafelice, the advertising manager, assisted by Kathryn Shimmon, then set his committee canvassing the town for support.

Directing these activities were our business manager, Gilbert DeVault, and his associates, Betty Bechtold and Joseph Rosplock, advised by Miss Margaret Broderick assisted by Mr. Harold Winkler.

When financial success was assured, Editor Frank Petee started his work with a literary staff including Associate Editors Lois Winegar and Kathryn Henry, Art Editor Richard Aldridge, Camera Editor Charles Stasek, assisted very ably by two underclassmen, Roger McKain and Robert Bauer; Feature Editor Lenore Neil, and Sports Editors Ann Thurman and John Delsantro.

Working very diligently under the able direction of Miss Margaret Broderick we have finally completed the "Lens" and—hope you like it.



MISS MARGARET
BRODERICK



MR. HAROLD
WINKLER

Language Clubs



French Club—Sheridan, Delsantro, Petee, Phillips, Brown, Gunvalsen, MacLennan, Christensen, Edwards, Wolkersdorfer, Davis, Mr. H. Lake, Florio, McKinnon, Thurman, Kimmel, Shimmon, Ritter, Wachic, Tatman, Bechtol, Mills, Daniels.
Latin Club—Vohlers, Sprackling, Caster, Jones, Kirk, Hayden, Cuthbertson, Hayward, Phillips, Meil, Hamilton, Henry, Brillinger, Kruger, Daniels, Bornemann, Hilty, Miss A. Knight, Tatman, M. Smith, Henderson, Aldridge, Lemr, Wood, Petrovic, Goodrich, Gear, Howard, Armington, Bechtol, McGarry, W. Smith, Harrold, Campbell, McCann.

THE French Club dates back to 1932 when it began with meetings after school. In 1933 the policy of having meetings at the homes of the members was adopted. Those who are eligible are second year French students who have had a grade of "C" or better during the first year work. During the second semester the members of the first year class who have had a grade of "B" or better are eligible. The club meetings are informal and are composed of games and songs. The purpose of the club is to acquaint the members with the French language and customs. Mr. Herbert Lake is the adviser.

The Latin Club was formed about five years ago. It was started with eight members and no limitations. Now it has grown to about thirty members and to be eligible students must maintain a grade of "C" or better. The meetings are held at the homes of the members every two weeks. Latin Club meetings are also informal and are composed of Latin games and sometimes added attractions. Miss Adele Knight is the very capable director.

Commercial Club



THE Commercial Club was originally organized by Miss Margaret Gibbs with the object toward advancement, protection and the benefit of its members.

At the time the constitution was drawn, only four officers served. These were the president, vice president, secretary and treasurer. This year of 1939 a reporter has also taken office.

Holding the office of the president and serving ably is Betty Jane Charske. As vice president is Marie Cornwall; secretary, Margaret Anderson; treasurer, Frances Koci, and reporter, June Ann Lawrence.

The membership fees for the semester, when first organized, were fifteen cents but has grown to sixty cents a year, which is returned by way of a banquet at the closing of the year.

The club holds meetings every month at such times and places designated by the officers and faculty adviser. To the members at the meetings are brought outside speakers, moving pictures and demonstrations.

Miss Margaret Gibbs was most ably assisted by Miss Helen Biddle during the beginning years of the organization, but, since Miss Biddle's absence this year Mrs. Mildred Boley has more than satisfactorily filled the position as assistant.

O-An-Bee Playshop



First row—Richard Aldridge, Lillian Daniels, Arthur Armington, James McCormick, Shirley Zickerman.
Second row—Caroline McDermott, Tom Boggs, Dorothea Rossen, Kathryn Shimmon, Nancy Venditti.
Third row—Wayne Wells, Jim Hilty, Mildred Knouff, Louise Wolkersdorfer, Miss Cleo Sawyer.
Last row—Karl Lemmerman, Bob Duff, Bill Hilty, Robert Bornemann, David Dennison.

"O-AN-BEE PLAY SHOP" is the fascinating name of Union High's dramatic club which is under the sponsorship of Miss Sawyer.

Every second and fourth Wednesday of each month finds twenty enthusiastic members discussing dramatic principles, participating in short plays, offering demonstrations in make-up or giving interpretations and dramatic readings.

A prospective member of the dramatic club must have two tryouts in order to make the eliminations which are necessary to meet the club quota. First of all he must pick out a selection and dramatize it. This is followed by his dramatization of another selection which has been selected by the club.

During the Christmas season the "O-An-Bee Play Shop" presents "Why the Chimes Rang" by E. A. McFadden, at assembly. So impressive and colorful is this production that it has become a tradition which will be given every year. This year's cast included James Hilty as Holger; James McCormick as Steen; Karl Lemmerman as Bertel; Dorothea Rossen as an old woman and Robert Duff as the priest. The other members of the club also contributed.

March the seventeenth, nineteen thirty-nine, found this club presenting a play at the tournament festival in Kirtland.

This group of actors belongs to the National Thespian Society which is a National Honorary Dramatic Society.

The officers of the club are Nancy Venditti, president; Dorothea Rossen, vice president; Shirley Zickerman, secretary, and Arthur Armington, treasurer.

Band



First row—Tough, Mitchell, Hamilton, Campbell, McCann, Angelotti, Rosplock, Klein, Houser, Jones, Ely, Wilcox, Fletcher, Clayton, Lutman, Brown, Todd, Sandman, Daniels.
 Second row—Lamos, Englebret, Petrovic, Jenson, Cummings, Jordan, Harrison.
 Third row—Nord, Armington, Wells, Groathe, Shutt, Sulzmann, Scaglione.
 Fourth row—Schmidt, Salomone, Pfeiffer, Lemmerman, Phillips, Borneman, Dietz, Charske.
 Fifth row—Bidlingmayer, McFarland, Shimmon, Abbott, Jones.
 Sixth row—Wells, Garrett, Haker, Nason, McKinnon, Schmidt, and Mr. C. Ruddick.
 Not pictured—Bistarkey, M. Petrovic, R. Sulzmann, Wright, Young, Peterson, Randall.

THE Willoughby High School Band is one of the most important organizations in the school and its influence is felt in the town perhaps more strongly than that of other groups. Charles Ruddick is the director of the sixty students who meet every day.

The officers chosen this year were George Schmidt, president; Elmore Nord, vice president; Lillian Daniels, secretary, and Eileen Brown, publicity manager. The Band Boosters, organized parents and friends of the Band members, have played a prominent part in the success of the Band.

This year a more intensive program for beginning players was initiated. A junior band of thirty-five members, mainly freshmen, was formed, and through its daily rehearsals beginning players can be checked and developed into senior band material. In order to create more interest this band entered the elementary school contest at Wooster and received a favorable rating.

The senior band contributes through playing and marching to the rallies and football games of the school, plays for several assemblies and presents a spring concert, this year on March 31. Small ensembles from the band took part in the solo and ensemble contest and the German Band has also distinguished itself through frequent appearances.

The outstanding musical event of the year was probably the National Band Contest, held for this district in Kent on March 25. Competing with larger schools in this district the band has placed very high in the contest for several years. This success in the field of symphonic band music merits our pride. It is through the leadership of Mr. Ruddick that the band has achieved the place it now holds.

Orchestra



First row—Frank Gill, Margaret Anderson, Lenore Neil, Doris Neil, Louise Smart, Lillian Daniels, and Ruth Phillips.

Second row—Marvin Mentser, William Phillips, Ruth Lamos, Robert Harrison, and Francis Cummings.

Third row—Connie Campbell, Peggy McCann, William Garrett, George Schmidt, and Hadley Kline.

Not pictured—Jacqueline Young, Jack Lee Peterson, George Pallak, Anthony Fatica.

THE orchestra under the direction of Mr. Ruddick this year has twenty members who practice three days a week. Because of a lack of string players the orchestra has been retarded to a great extent but has furnished the incidental music for plays and other school activities.

The members of the orchestra during their rehearsals are given a chance to work on symphonies and other standard works and to become acquainted with some of the outstanding composers. Records are sometimes played to familiarize the players with famous works, or to illustrate instrumentation and tone coloring.

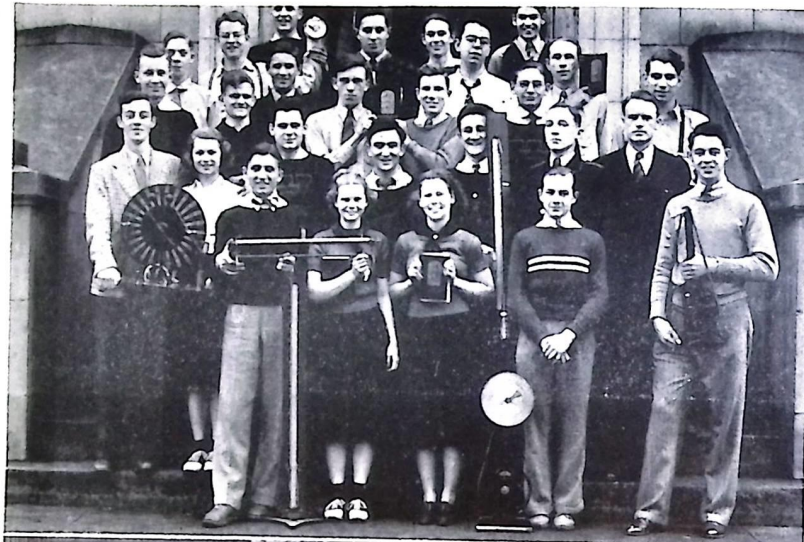
Each year towards the close of the school term a banquet is given for the band and orchestra. A speaker is usually chosen from the field of music supervisors.

The orchestra assisted the Glee clubs in a combined concert this spring.

Physics Club

One of the school's clubs that has done much to further the knowledge of science is the Physics club. The activities of the club include field trips and scientific demonstrations by the members. The field trips this year included the science departments of Case University and Western Reserve, a visit to the Ohio Rubber, and a trip to the Warner & Swasey Co., makers of telescopes. The club is supervised by Mr. Harvey Helm.

The officers are: President, Gerald Daniels; Vice President, John Delsantro; Secretary, Lois Winegar, and Treasurer, Arthur Tatman.



Take-N-Easel Club

Although the Take-N-Easel club is comparatively new it has made definite progress in teaching its members the appreciation of art. By creating an art club the students felt that they would become more accomplished and interested in art work.

At different intervals throughout the year the members exhibit their pictures and drawings in the school library. The supervisor is Miss Dorothy Cowell.

The officers are: James McCormick, president; Eileen Brown, vice president; Richard Aldridge, secretary, and Jean Smith, treasurer.

Searchlight Club



Members here pictured are—Jeanne Metcalf, Marjory Grady, co-editors; Gilbert DeVault, Frances Koci, Miss Margaret Broderick, Clifford Seibold, June Ann Lawrence, Anne Thurman, Paul Lawrence, Charles Stasek, Ted Myers, Helen Cie Chanski, Winton Axford, Betty Jane Charske, Frank Petee, Caroline McDermott, Joseph Scarola, and Carmen Infelice.

THE members of the fourth period Journalism Class do make up, constitute, and comprise the "Searchlight" staff. The "Searchlight" is that object which is the pride and joy of any school—in this case, the school paper of Willoughby Union High School.

The staff is ably guided and taught by Miss Margaret Broderick, who is also the adviser for the Annual staff.

The staff has been very active this year. During the last semester the class took entire charge of writing, copyreading, and laying out the paper.

On January 12 the staff invited all the Journalism classes in Lake County to a banquet for the purpose of forming an association. On February 17 they invited each school to send three delegates to form a plan for the association.

Glee Club



Boys

President: ROBERT BECHTOL
Secretary: MERLE STAFFORD
Social Chairman: ROBERT BORNEMANN

Girls

RUTH PHILLIPS
JUNE EDWARDS
IRENE SWAIN

THE Boys' and Girls' Glee clubs are organizations which hold the interest of a large number of pupils of Union High School. This year they had their usual large enrollment of seventy.

During the first semester the music department worked with the Dramatic Club in presenting a Christmas program in assembly. Their special arrangements of Christmas carols were very ably presented and greatly enjoyed by the students and faculty.

On February 14 a Saint Valentine's Dance was promoted through the combined efforts of the clubs. Being the first dance sponsored by the clubs in quite a few years, the results were very pleasing and it is hoped that this will become a yearly affair.

The annual mixed concert was heard the first week in May. It proved as spectacular and entertaining as previous similar programs. The progress of the clubs has been decidedly improved in their renditions of the difficult scores—great credit going to the members and their conductress, Mrs. Judson.

As in former years the girls will aid in presenting an appropriate program for Senior graduation exercises in June.

With the near close of the school year these organizations feel that they have accomplished much and are already looking forward to next year with much enthusiasm.



WILLOUGHBY
A City of Opportunity

- Finest Educational Facilities
- Churches for All Creeds
- Municipally Owned Utilities
- Active Service Organizations
- Home of Thriving Industries
- A Neighborly Residential District
- Home of Andrews School
- Rich in Historical Lore

*PREPARE YOURSELF
 TO BECOME A USEFUL CITIZEN
 OF THIS FINE COMMUNITY
 AND PLAN YOUR FUTURE TO
Grow With Willoughby*



**THE WILLOUGHBY
 CHAMBER OF COMMERCE**



WILLOUGHBY

Ice Cream & Candy Center

Fairmont's Ice Cream Sold Exclusively



Koster's Sweet Shop

9 Erie Street

Phone 295

Dyke School of Commerce

A collegiate grade school
offering expert training in
all branches of business

Co-educational



Standard Building CHerry 2520
Cleveland

*"The Quality Business Training
School"*

A Willoughby Institution

Employing Willoughby People
71% (10 of 14) Attended W.H.S.

Supporting Willoughby Affairs
Soliciting Willoughby Patronage

FAIRLEY'S

An Edwards Food Store

44 Erie Street Phones 135-136

FLY

The New Lycoming — 50 Taylorcraft DEWEY-ELDRED FLYING SERVICE

STUDENT INSTRUCTION AIRPLANE SALES

Lost Nation Airport
WILLOUGHBY, OHIO

Compliments of
MR. AND MRS. U. A. HENGESBACH

WILLOUGHBY SWEET SHOP

"Next to the Willoby Theatre"



FRESH POP-CORN
HOMEMADE CANDIES

COTTRELL'S NEWS STAND

Subscriptions Taken For
All Magazines

26 Erie Street

Phone 39

BEEBOWER BROS., Inc.

Grain, Feed, Seeds, Fertilizers,
Coal, Etc.

Phone
Willoughby 33

Phone
Mentor 4211

Compliments of

Willoughby Coal & Supply Co. BUILDERS' SUPPLIES

Domestic, Stoker and Steam Coals, Coke
Phone 80-81 Willoughby, Ohio

Lake County Gas Co.

WILLOUGHBY

MENTOR

WICKLIFFE

WILLOWICK

FAIRPORT

PARKERS LUMBERING and HEATING SERVICE

15 Second Street Willoughby, Ohio
Phone 467 Residence 437-J

Compliments of

The LAIRD LUMBER CO.

Church and Elm Streets
Telephone 358

Compliments of

E. E. VOHLERS & SONS Licensed Real Estate Brokers

59 Erie Street Phone 170

Compliments of

Willoughby Tire & Supply Co.

Erie Street at Bridge
Phone 19

CLARA RICHARDSON DONETHEA WICKER

Compliments of

The Luzier Beauty Service



40 Euclid Avenue Willoughby, Ohio
Phone 108
Willabee Branch Phone 63-W

IVAN PETERSON

... the loveliest of flowers
... gifts of all types
... stationery
... greeting cards
... airplane, boat, and
train models



Visitors Welcome 18 Second St.

CITY ICE and FUEL

30 Elm Street Phone 42

CUT RATE FURNITURE STORE

Dean D. Fuller, Proprietor

Finest Quality Used Furniture

Phone 255 Res. Will. 944W2
5 Second Street Willoughby, Ohio

You Can't Buy Better Protection Than
GOODYEAR LIFEGUARDS
TO SAVE YOUR LIFE

Give Your Family Lifeguard Protection

GOODYEAR SERVICE

94 Erie Street Phone 184

Compliments of

SHEFFIELD DAIRY



Phone 43
8 Second Street Willoughby, Ohio

Our Congratulations

Success to you, seniors — and to the resumption of Year Book Activities. The entire personnel of this organization extends best wishes for success in whatever may be your future activity. We hope this store, long familiar with the requirements of the student, will continue to enjoy your patronage.

Gail G. Grant, Inc.
PAINESVILLE

"Good Food is Good Health"

Special School Lunches at 25c
Home Made Ice Cream
Open Sundays All Summer

Olsen's Restaurant and
Ice Cream Parlor

56 Erie Street Willoughby, Ohio

Alice Shoppe

Next to Willoby Theatre

MILLINERY DRESSES HOSIERY

LINGERIE HANDBAGS GLOVES

Charis Adjustable Foundation Garments
Swavis Flexible

Telephone 238R

THE WILLOBY THEATRE



Euclid Avenue
WILLOUGHBY, OHIO

CHARLES T. JONES, President

HARRY F. FRITCHEY, Vice-President

CONGRATULATIONS

*From the Workers of Today
To the Workers of Tomorrow*

RALPH E. PORTER, Recording Secretary

WILBUR D. BROWN, Financial Secretary

CIRCLE STAR RIDING ACADEMY



FREE INSTRUCTION

HORSES BOARDED

ILLUMINATED NIGHT FIELD

"RIDE YOUR WAY TO HEALTH"

Rockefeller and Eddy Roads

Phone Wickliffe 139W

"FRIZZELL'S" ICE CREAM



is a

HEALTH FOOD

gives you

PEP and VITALITY

For Sports Eat More of

FRIZZELL'S

WILLIAM MEIL, Inc.

Dry Goods



64-66 Erie Street Willoughby, Ohio

J. & L. SERVICE GARAGE

John Lillich

Lionel Heath

Expert Auto Repairs

Electric and Acetylene Welding

99 Erie Street

Willoughby, Ohio

HERMAN DRY CLEANING

Lake County's Leading Cleaner
WE CALL AND DELIVER

74 Erie Street Phone 119 Willoughby, Ohio

LENTZ SIGN CO.

FOR BETTER SIGNS



East Spaulding Street Willoughby, Ohio

Compliments of

DAVIS FUNERAL HOME

36 Clark Avenue Willoughby, Ohio

Our Hearty Congratulations

The **WRIGHT STORES** Dept.

"Your Friendly Shopping Center"

Willoughby

Compliments of

JORDAN COAL CO.

15 Erie Street Phone 15

Willoughby Fruit and
Vegetable Market

FREE DELIVERY

Phone 91 63 Erie Street

*Fresh Fruit Daily—In Season and
Out of Season*

Compliments of

Willoughby Shoe Repair

3 Third Street Joe Marino



Save With Safety
Current Dividends 3 1/2%

Compliments of

SNYDER FURNITURE STORE

19 Erie Street Willoughby, Ohio

BAKER DRUG CO.

37 Erie Street Phone 52

Willoughby's Only Independent Drug Store

WE GIVE EAGLE STAMPS
YOUR EXTRA SAVING
WE DELIVER

WILLOUGHBY HARDWARE COMPANY

Frigidaire Refrigerators and
Electric Ranges
RCA and Philco Radios



Congratulations, Seniors

BELMORE'S CREAMERY

Light Lunch

7 Second Street Phone 255

"Next Door to Jail"

H. W. KNOWLES MOTORS

Authorized Dealer
CHRYSLER—PLYMOUTH—GRAHAM

Automobiles—New and Used

61 Erie Street Tel. 470 Willoughby, Ohio

HOWARD S. HILLMAN
Accident and Health Insurance
Hospitalization Contracts



914 Schofield Building Cleveland, Ohio

H. F. SIMON, Inc.
Men's Wear
Shoes for the Family
Home of W. L. Douglas Shoes



Telephone 26-J Willoughby, Ohio

KLEIFELD'S RESTAURANT

73 Erie Street Willoughby, Ohio

Good Coffee Always
We Never Close

JERRY'S

Hamburgers of Distinction

Route 6—one mile west of Route 91

COFFEE LOGANBERRY

ERNST BIRKHOLOZ, Inc.

For QUALITY and PRICE
Haberdashers — Shoes



Phone 92 Willoughby, Ohio

JAMES A. McMAHON Funeral Home

*Music Supervisor in Willoughby
for Twenty-Five Years*

51 Euclid Avenue Telephone 162

The Daniels Brothers Coal Co.

Coal — Fuel Oil — Road Oil
Bituminous Road Construction

Willoughby, Ohio

Compliments of
ROY L. MONCRIEF, Inc.

Dodge and Plymouth Cars
Dodge Trucks



50 Euclid Avenue Willoughby, Ohio

SINCERE CONGRATULATIONS

Fraternal Order
of Eagles
FRATERNAL ORDER
OF EAGLES

Compliments of

E. B. KIMMEL

Phone 344

63 Erie Street Willoughby, Ohio

Compliments of

A. T. HILL & CO.

GROCERIES and BUILDERS' SUPPLIES

Phone 17 Willoughby, Ohio

Compliments of

Lake Shore Lumber & Coal Co.

Willoughby, Ohio

WINFIELD'S



*A Pleasant Place For All—
Come and Enjoy a Grand Evening*

Compliments of

THE MAYFIELD COAL & SUPPLY CO.

Lloyd Rd. & Nickel Plate 6304 Mayfield Rd.
Wickliffe, Ohio Mayfield Heights, O.
Wickliffe 168 Hillcrest 40

Have You Seen Our Nu-Tone Photo Work?
Lifetime Prints

FOR FINE PHOTO FINISHING

try

MARSHALL DRUG CO.

Compliments of

BECKER'S CLEANERS AND DYERS

Mr. and Mrs. Gus Engert, Prop.

61 Erie Street Phone 53

WILLOUGHBY, OHIO

How YOU Can Win Good Business Positions

Study today's business problems under actual business conditions at Spencerian College where modern equipment, classrooms free from noise, good lighting and good air are extra aids to your success.

Write today for your FREE copy of "New Opportunities"; see how YOU can obtain a good business position.

Easy, Low Tuition Plan

SPENCERIAN COLLEGE

3201 Euclid Avenue Henderson 3200
91 Years of Faithful Service to Student
and Employer

CONGRATULATIONS

from

WILLOUGHBY'S LARGEST INDUSTRY

to

THE "LENS"

OHIO RUBBER CO.

WILLOUGHBY



ELSIE LOCKE

LILLIAN MELE

DAINTEE BEAUTY SHOP



"Make Us Your Beauty Habit"

13 Erie Street, room 208 Willoughby, Ohio
Phone 372

CLARE W. SPRAGUE

Real Estate
General Insurance



Phone 96
60 Erie Street Willoughby, Ohio

J. B. COLE, Inc.



AUTHORIZED
DEALER



"MERCURY"

Your Local Dealer in "Transportation Needs"

TRUCKS AND COMMERCIAL UNITS

Phones 306-307
97 Erie Street Willoughby, Ohio

COMPLIMENTS OF

THE
SENIOR
CLASS

Compliments of

THE ROSE STUDIO

27 Erie Street

Telephone 79

*"To Foster and Perpetuate a One
Hundred Per Cent Americanism"*

Palmer-Roberts Post Unit
No. 214



The American Legion and
Auxiliary



Willoughby, Ohio

Compliments of

Willoughby Kiwanis Club



"WE BUILD"

Meets every Tuesday 6:15
at Masonic Temple

Sears, Roebuck & Co.

Retail Store



Telephone: Painesville 4313

95 North Park Place

Painesville, Ohio

GOODRICH CLOTHES CO.

Suits — Topcoats — Overcoats
*"Swing and Sway the Goodrich Way
and Save \$10.00"*



AL. GELFAUD, Mgr.
505 Prospect Ave.

Established 1920
Cleveland, O.

Compliments of

SMART INS. AGENCY

JAS. H. SMART ROGER E. SMART

General Insurance

59 Erie Street

Phone 170

E. J. MOLONEY

Union Central Life Insurance Co.

General Insurance
Fire, Life and Automobile

Terminal Building Willoughby, Ohio
Phone 96

BEST WISHES
The RICHMAR RESTAURANT

Route 20

Mentor, Ohio

Pepsi-Cola and 7 Up
Headquarters

POLITE BEVERAGE DIST. CO.



9 Elm Street

Willoughby, Ohio

Phone 311

Compliments of
EASTON & MAGEN, Inc.
Real Estate and Insurance

Phone 29

51 Erie Street

Willoughby, Ohio

**J. L. PROKOP & SONS
FLORISTS**



"Say It With Flowers"

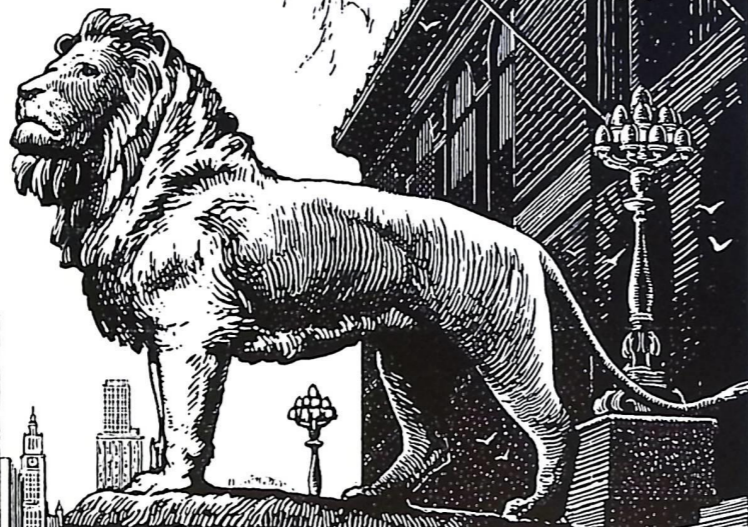
Telephone 88
Lost Nation Road Willoughby, Ohio



A NEW
PERMANENT
for the
NEW SEASON

NELL PAGE PHONE 400
12 ERIE ST. *Beauty Salon*
"OUR WORK SPEAKS FOR ITSELF"

"JAHN AND OLLIER AGAIN"



Repeated acceptance by discriminating Year Book Boards has inspired and sustained the Jahn & Ollier slogan that gathers increasing significance with each succeeding year.

Modern wood-cut style illustration of Michigan Avenue looking north from Chicago Art Institute.

JBS

JAHN & OLLIER ENGRAVING CO.
817 West Washington Blvd., Chicago, Ill. - Telephone MONroe 7080
Commercial Artists, Photographers and Makers of Fine Printing Plates for Black and Colors

Service
since 1914



SERVICE PRINTING COMPANY
THIRTY-ONE RIDGE ROAD
WILLOUGHBY, OHIO

PHONE
WILLOUGHBY 390

PATRONIZE OUR ADVERTISERS

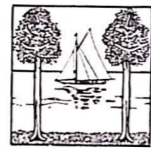


Alice Shoppe	82	Lake County Gas	80
American Legion	90	Lakeshore Lumber	87
Baker	85	Lentz	84
Becker	87	Luzier's	81
Beebower	79	McMahon	86
Bellmore	85	Marshall's	87
Birkholz	86	Mayfield	87
Cartoons	77	Meil, Wm.	83
Chamber of Commerce.....	76	Moloney, E.	91
Circle Star	83	Moncrief	86
City Ice.....	81	Nell Page	91
Cole, J. B.....	89	Nickel Plate	79
Cottrell's	79	Ohio Rubber	88
Daintee	89	Olsen's	82
Daniels	86	Parker	80
Davis	84	Peterson	81
Dewey-Eldred	79	Polite	91
Dyke	78	Prokop, J.	91
Eagle's	86	Richmar	91
Easton Magen	91	Rose Studio	89
Fairley's	78	Sears Roebuck	90
Federal Savings	85	Sheffield	81
Fuller	81	Senior Class	89
Gongwer-Frizzell	83	Simon Clothier	86
Goodrich	91	Smart Ins	91
Goodyear	81	Snyder	85
Grant's	82	Spencerian	87
Herman	84	Sprogue, C.	89
Hill, A. T.	87	Theatre	82
Hillman	85	United Rubber	87
J. & L. Garage	83	URWA	83
Jahn Ollier	92	Vohler's	80
Jerry's	86	Willoughby Coal	79
Jordan Coal	84	Willoughby Fruit Market	84
E. B. Kimmel	87	Willoughby Hardware	85
Kiwanis	90	Willoughby Shoe Repair	85
Kliefeld's	86	Willoughby Sweet Shoppe	79
Knowles	85	Willoughby Tire	80
Koenig	93	Winfield's	87
Kosters	78	Wright	84
Laird	80		

Autographs



Official Jewelers
for
Willoughby High School
Classes of 1939-1940



Spartan Jewelers
Buffalo, N. Y.

PATRONIZE OUR ADVERTISERS

