

# LENS<sup>40</sup>





# The LENS

## 1940

VIEWING A YEAR AT WILLOUGHBY  
HIGH SCHOOL, WILLOUGHBY, OHIO,  
THROUGH THE LENS OF A CAMERA.  
WE RECORD OUR FRIENDS AND DEEDS  
IN PICTURE AND TYPE



JANE DUFF, *Editor*  
JOHANNA GOCKEL, *Business Manager.*

# FOREWORD . . .



MISS MARGARET BRODERICK  
*Advisor*



JANE DUFF  
*Editor*

## ANNUAL STAFF

November! Annual staff selected—works enthusiastically.

An Annual costs money! Johanna Gockel, business manager and Karl Lemmerman plan candy sales, carnival and leap year dance.

High pressure salesmanship sends thermometers up as circulation manager Jean Clark and assistant Dorothy Tatman start subscription drive.

“Advertise in the Lens!” Jean Robinson, assistant Jack Mertz, and committee solicit town.

Photographer arrives. Nerves snap and fuses blow, but anything for an annual. Roger McKain, camera editor and assistant Bob Bauer, get candid shots at odd moments.

While cameras click and subscriptions fly, the feature committee starts. Copy written, corrected, rewritten, and corrected again by Betty Jones, and assistant Jacqueline Young.

Spring! Ever-busy Editor Jane Duff with the task of final editing. Assistant Jack McGarry gathering sports material. Miss Margaret Broderick supervising all work.

Sent to press at last, the 1940 Lens—to be cherished by every senior and enjoyed by each underclassman.



Seated—Jacqueline Young,  
Johanna Gockel, Wayne  
Wells, Jean Clark and Jean  
Robinson.  
Standing — Jack McGarry,  
Karl Lemmerman, Bob Bauer,  
Dorothy Tatman, and Roger  
McKain.  
Not Pictured — Betty Jones.

# We Honor . . .



Mr. E. M. Otis  
Former Superintendent of  
Willoughby High School

Mr. Otis, an outstanding civic leader and educator in Willoughby, has given thirty-seven years of service to an ideal. To Willoughby youth he has given freely of his encouragement, consideration, and wise counsel. Superintendent Otis has been not only a true friend to every high school student, but also a glorious inspiration in each one's life to rise above his handicaps. We have become, at least in thought, a part of his sparkling wit and courageous spirit. May the future classes of Willoughby foster and cherish this rich tradition set by him. With the greatest admiration and respect, we, the class of 1940, dedicate this “Lens” to you, Mr. Otis.



# *Candidly Viewing The School*

## IN THREE PORTFOLIOS

PORTFOLIO ONE

CAMERA PORTRAITS

PORTFOLIO TWO

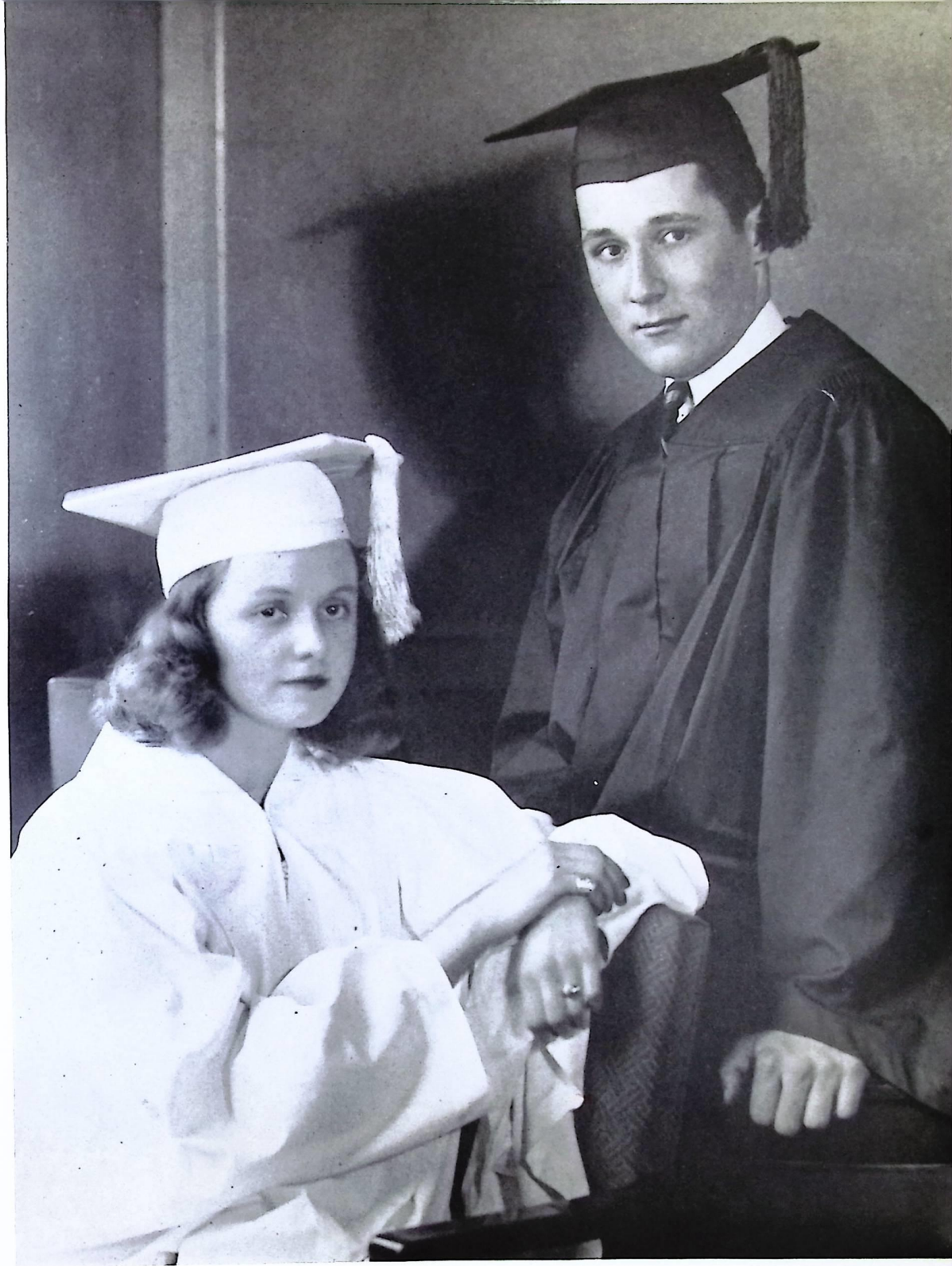
SCHOOL ACTIVITIES

PORTFOLIO THREE

ATHLETICS AND FEATURES

PORTFOLIO ONE

*PORTFOLIO OF CAMERA PORTRAITS*



## THE SCHOOL BOARD



Mr. H. J. BECHTOLD  
Chairman

The high school committee has maintained its policy of doing every thing possible to increase the educational opportunities of the youth of the community.

The usefulness of the library has been increased by the addition of a large number of new books. New equipment has been required to provide for the rapidly growing high school enrollment; this has been provided. Much material is still needed. It will be provided as the funds become available.

The cooperation of the Willoughby Village Board of Education with the high school committee has made possible the use of Memorial Junior High School to relieve the overcrowded condition of our building. The increase of high school enrollment and taxing of the building and instructional facilities have become the major problems of the high school committee for the coming year.

Left to right: County Supt. J. R. Williams, Supt. J. B. Woodside, Chairman H. J. Bechtold, Vice Chairman Dean Fuller, Mrs. Maude Schultz, Clerk Ralph Farquhar, Glen Lowman.



## TO THE GRADUATES

You seniors of 1940 have heard much about the lack of opportunity for the present day high school graduate. If this is true, is it not also true that the conditions you face create more of a challenge? This challenge can be met by being keenly alert, observing, adaptable and willing to make a humble beginning in whatever you undertake. How many of you are equal to it? All, I hope.

J. B. WOODSIDE

You, the Class of 1940, graduate at the end of the world's worst decade economically and socially. However, ten years of enforced economy, intelligent study of social problems, experiments in school and federal government have resulted in developing a type of student infinitely better able to cope with the problems of spiritual and civic life than those of more prosperous periods.

E. M. OTIS





W. O. Barker  
Mildred Boley  
Margaret Broderick  
Harold Brown  
Ellen Buyer



Florine Carroll  
Dorothy Cowell  
Madeleine Fickes  
Betty Fisher  
Rosalind Fouts



Margaret Gibbs  
Harvey Helm  
Leland Jenkins  
Archie King  
Adele Knight



Herbert Lake  
Charles Ruddick  
Cleo Sawyer  
Alan Shankland  
Sylvia Simon



Ray Singer  
Jean Smith  
Ethel Spaller  
Robert Wendorf  
Harry Winkler

## FACULTY CENSUS

NAME	SUBJECT	REMEMBER FOR	ALL IN FUN
Barker, W. O.	Science	Hi-Y	"Now what do you think of this?"
Boley, Mildred	Commercial	Office Staff	Parties
Broderick, Margaret	English, Latin, Journalism	Annual Staff	Freshman troubles
Brown, Harold	Mechanical Drawing, Shop	Ticket Taker	Ping Pong
Buyer, Ellen	Commercial	National Honor Society	Giggles
Carroll, Florine	English, Speech	Senior Play	Red Hair
Cowell, Dorothy	Art	Chapel Window	Temper
Fickes, Madeleine	History	Library Work	Radio
Fisher, Betty	Music	Glee Club	Quiet in assembly
Fouts, Rosalind	Home Economics	Banquet serving	Seriousness
Gibbs, Margaret	Commercial	Commercial Club	Desk full of shoes
Helm, Harvey T.	Science	Stage work	Detention slips
Jenkins, Leland	Mechanical Drawing, Shop	Dance, Carpentry	Sense of humor
King, Archie	English	Rifle Club	Study (?) Halls
Knight, Adele	Latin, Algebra	Friendship Club	Tarda
Lake, Herbert	French, English	Treasurer	Illustration of French verbs
Ruddick, Charles	Music	Band	"Hold it down, basses!"
Sawyer, Cleo	American and English Literature	Dramatic Club	Edgar Allen Poe
Shankland, Alan	Social Sciences	Student Council	Classroom Jokes (?)
Simon, Sylvia	German, Social Sciences	German Club	Her influential friends
Singer, Ray	Physical Ed.	Basketball	Pa Pa
Smith, Jean	Physical Ed.	Football-Track	"Now when I was in college."
Spaller, Ethel	Physical Ed., Biology	Girls "W" Club	No Jitterbugging
Wendorf, Robert	Economics, Geography	Advice	Rolling his eyes
Winkler, Harry	Mathematics	Debating	Rare laughter



# Thru The Camera's Eye We View

September, 1940. Seniors at last! What a thrill to sit in the senior balcony! How we lord it over the underclassmen!

"Rocket to fame with Rosplock!" "Over with Jordan to prosperity!" Banners flying, campaign speeches, rallies! 1940 is election year and not to be outdone we hold one of the most spirited campaigns ever seen in Willoughby.

October, the excitement of night football games. They mean even more this year with our own classmates in there fighting.

Our first class meeting with President Rosplock presiding. We, the class of 1940, not to be outdone by the class of '39" shall have a bigger and better annual. Our class motto "Pergo et Perago" our class colors maroon and white.

November, heads ached as our brains were taxed to the utmost for I. Q. tests. Oh, why were we seniors!

December, January, Christmas vacation—a whirl of holiday gaiety, but one that precedes a calm before the storm of mid-year exams which were held during sub zero weather.

February, Basket-ball games, school dances, classroom routine, and a nice feeling of relaxation for us while we watch frowns deepen on the faces of prom minded juniors.

March, A Leap Year Dance, then the excitement of senior play try-outs. The joy of successful aspirants, hours of rehearsals!

April, Spring fever climaxed at Friendship Club Dance. At last the senior play—our play and our success.

Class problems of commencement staring us in the face. Caps and gowns, announcements, cards, and the class gift.

May, The PROM! Who will ever forget it? Then our banquet an actuality.

Our advisors, Miss Madeleine Fickes, Miss Ethel Spaller, Mr. Harry Winkler, and Mr. Alan Shankland, warn us that commencement is here. Just another week of high school, everyone rushed trying to utilize every moment of it. It's been fun being seniors. It's a little hard to leave—but here's to the future—whatever it may bring.

# One Hundred And Twenty Seniors

## CLASS OFFICERS

President ..... John Rosplock  
 Vice President ..... Robert Mitchell  
 Secretary ..... Jane Duff  
 Treasurer ..... Jeanne Sherman

## Senior Personalities

"Your third payments due."

Bets

Jo

Oomph girls

Dream Girl!

Coquette

Fancy pants

Rosplock Rockets

Romeo  
 Going-going-gone-one class president





*What*

*We Have Worked Four Years For*



STEWART F. ARMINGTON

Hi-Y  
Senior Play  
Student Council

WILLIAM S. ARMINGTON

Hi-Y  
Dramatic Club  
Senior Play

HAROLD G. ARNDT

Baseball

LEE E. BIDLINGMAYER

Band  
Fencing Club

BRUCE L. BIXEL

Mixed Chorus

HELEN BIZJAK

Art

DORIS BOCK

Withdrawn

GLENN R. BOOKER

Fencing Club  
Office Staff

STANLEY F. BOOR

Conservation Club  
Stage Work

LILLIAN J. BOZEGlav

W. Club

MARY E. BRILLINGER

Friendship Cabinet  
W. Club  
N. H. S.

QUATA E. BURKE

Senior Play  
Friendship Club

CHARLOTTE L. CALL

W. Club  
Cheerleading

EMILY M. CASTER

President of  
Friendship Club  
Dramatic Club  
N. H. S.

JEAN CLARK

Friendship Club  
Lens Circulation  
Manager

EILEEN CLAYWELL

Friendship Club

HELEN CLIFFORD

Friendship Club  
Commercial Club

J. FRANCIS CUMMINGS

Hi-Y  
Band

PAULINE V. CURTISS

Friendship Club  
Art

RUTH A. CUTHBERTSON

Scholarship Club  
Glee Club  
Friendship Club



WINIFRED DANN  
Commercial Club  
Friendship Club

LILLIAN DANIELS  
Treasurer of  
Student Council  
Friendship Cabinet  
N. H. S.

BENNY DE MILTA  
Football

ROBERT M. DISBRO  
Hi-Y  
Scholarship Club  
Homeroom president

PATRICIA C. DOYLE  
Friendship Club  
Band  
Latin Club

JANE DUFF  
Editor Lens  
Class Secretary  
N. H. S.

MARGARET DURK

HENRY R. EATON  
Band  
Glee Club

ANNAMAE L. EMINGER  
Friendship Club  
Glee Club  
Commercial Club

MIKEL FERNOLEND  
Baseball  
Basketball

ILEDMOR FIELDS  
Friendship Club  
Band  
French Club

CHARLES J. FLORIO  
Dramatic Club  
Fencing Club  
Senior Play

ALICE B. FUNK  
Glee Club  
Art Club

FRANCES J. GALLAGHER  
Friendship Club  
French Club

WILLIAM A. GARRETT, JR.  
Hi-Y  
Band  
Homeroom president

FRANCES X. GILL  
Track  
Hi-Y  
Football

NATHANIEL H. GILLETTE  
Commercial Club  
Office Staff  
Scholarship Club

VICTORIA L. GLAVAC  
Friendship Club  
Glee Club

JOHANNA M. GOCKEL  
Lens Business  
Manager  
Friendship Cabinet  
N. H. S.

NATHANIEL GOODWIN  
Orchestra  
Track





DONALD E. GRAHAM  
Glee Club

MARIAN T. HANKS  
Friendship Club  
German Club  
Glee Club

DOROTHY HARROLD  
Friendship Club  
Glee Club  
Senior Play

GEORGE W. HAUPTKORN  
N. H. S.  
Senior Play

BETTY A. HAYDEN  
Friendship Club  
Commercial Club

JEAN D. HAYDEN  
V. Pres. of N. H. S.  
Scholarship Club  
Friendship Club

DOROTHY A. HAYWARD  
Pres. N. H. S.  
Friendship Club  
Scholarship Club

BETTY LOU HEITZMAN  
Friendship Club  
V. Pres. of  
"W" Club  
Treas. of  
Commercial Club

ROBERT H. HEITZMAN  
Rifle Club

RUTH E. HENDERSON  
Friendship Club  
Senior Play  
French Club

JAMES G. HESKETH  
Track  
Commercial Club

LOUISE E. HRADECKY  
Commercial Club  
N. H. S.  
Friendship Club

RICHARD E. JOHNSON  
N. H. S.  
Scholarship Club

ELIZABETH E. JONES  
Friendship Club  
Cabinet  
Lens Feature Editor  
N. H. S.

PHYLLIS M. JONES  
Friendship Club  
Office Staff  
Commercial Club

BRANCHE JORDAN  
Glee Club  
Band  
Hi-Y

EUGENE B. JUDKINS  
Track  
"W" Club

HARRIET F. KIRK  
N. H. S.  
Student Council  
Glee Club

MILDRED E. KNOUFF  
Sec. of S. Council  
Dramatic Club  
"W" Club

FRANCES KOCI  
Commercial Club  
Searchlight

AGNES KOSTRAB  
Friendship Club  
Commercial Club

CHARLOTTE M. KRUGER  
V. Pres. of French Club  
Friendship Club  
Scholarship Club

HOWARD E. LANGE  
Hi-Y  
Glee Club  
Senior Play

ALLAN C. LANGSTAFF  
Band  
Rifle Club  
Glee Club

HENRY LEONELLO

BETTY J. LETTE  
Friendship Club

KENNETH D. LLOYD  
Captain Track Team  
Sergeant-at-arms "W"  
Club  
Commercial Club

RICHARD MANNINO  
Track  
"W" Club

TONY MANTA  
Student Council

TED P. MARSHAL

MIKE J. MARINO

EDWARD MARQUARDT  
Office Staff  
Commercial Club

AUDREY E. MASON  
Pres. of "W" Club  
Friendship Club Cabinet  
Secretary of N. H. S.

FREDA McCLELLAND  
Sec. of "W" Club  
Office Staff

JACK R. McCULLOUGH  
ROBT. McFARLAND  
Senior Play  
Band

FLORA A. MCGURER  
Searchlight  
Friendship Club

PATRICIA A. MEIL  
V. Pres. Student Council  
Friendship Club  
Dramatic Club

GILBERT A. MEINKE  
Pres. of Hi-Y  
Junior Pres.  
Student Council

DORIS R. METZUNG  
Commercial Club





**WILLIAM E. MEYERS**  
Band

**ROBERT J. MITCHELL**  
Class V. Pres.  
Senior Play  
Football Capt.

**BETTY M. MOHUN**  
Commercial Club

**IDA MORITZ**  
Office Staff

**MILTON MURPHEY**  
Band  
Senior Play  
Scholarship Club

**JOHN R. MEYERS**  
Hi-Y  
Football  
Track

**GEORGE NOGGY**  
Football  
Track

**BERNICE M. O'BRIEN**  
Sec. of French Club  
Mixed Chorus  
Scholarship Club

**INA E. PARKER**  
Office Staff  
Friendship Club

**VIRGINIA E. PERRIN**  
Friendship Club

**MYRON PFIEFFER**  
Hi-Y  
Band  
German Club

**WILLIAM G. PHILLIPS**  
Chaplain of Hi-Y  
Senior Play  
Glee Club

**DALE PICKARD**  
Hi-Y

**THOMAS P. QUINN**  
Searchlight

**JUNE WOOD**  
Office Staff  
Friendship Club

**JAY A. REEVE**  
Scholarship Club  
Fencing Club  
Track

**CATHERINE F. REIHL**  
Friendship Club  
Scholarship Club  
French Club

**JEAN M. ROBINSON**  
Friendship Cabinet  
Lens-Advertising  
Manager  
"W" Club

**JOHN S. ROSPLOCK**  
Class Pres.  
Band  
Senior Play

**DOROTHEA ROSSEN**  
Dramatic Club  
N. H. S.  
Office Staff

BETTY J. ROWLAND  
Cheerleader  
Friendship Club  
Office Staff

VICTOR J. SCHNEIDER  
German Club

RICHARD SCHROCK  
Baseball

MARIAN G. SCHULTZ  
Office Staff

DOROTHY SEIBERT  
Office Staff

CLIFFORD SEIBOLD  
Art Club  
Track

GEORGE A. SHAFFER  
Track  
"W" Club

RAY E. SHAFFER  
Dramatic Club  
Commercial Club  
Office Staff

BETTY J. SHERIDAN  
Senior Play  
Friendship Club  
Art Club

JEANNE R. SHERMAN  
Class Treasurer  
Senior Play  
N. H. S.

HOMUTH SIDEWAND  
Hi-Y  
Baseball  
Football

ANTHONY SALOMONE  
Band  
Searchlight  
Senior Play

CLAIRE M. SPRACKLING  
Friendship Club  
Glee Club  
French Club

ROBERT G. STOLLARD  
Policeman

CARLYLE H. SULZER

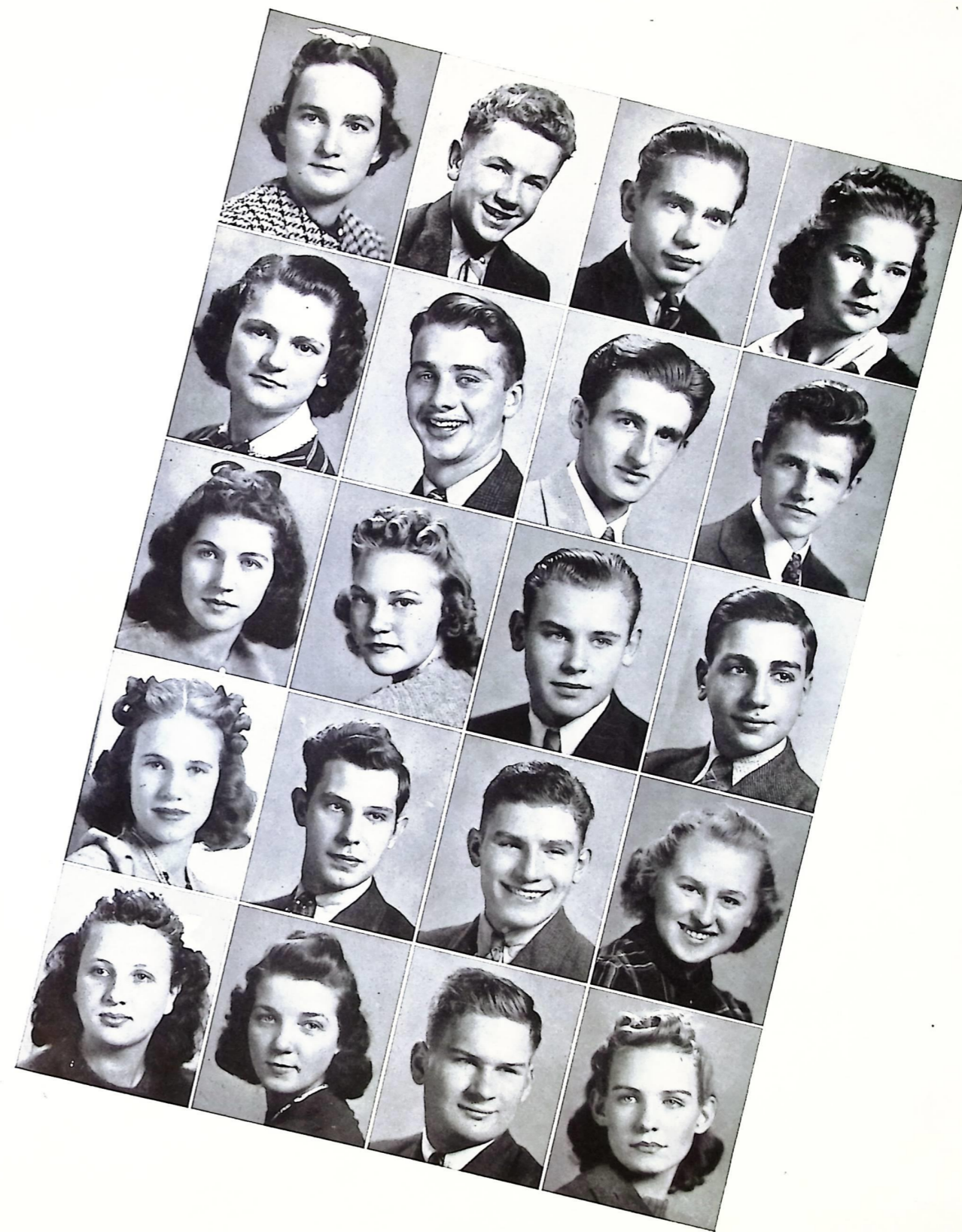
MARY B. SVEC  
Friendship Club  
Commercial Club

MARGARET TOUGH  
Marching Band  
Friendship Club

THELMA A. VICKROY  
Commercial Club

JACK F. VOHLERS  
Pres. of Student Council  
Senior Play  
N. H. S.

PAULINE B. WITHERITE  
Commercial Club  
Glee Club



## Incidents We'll Never Forget

The first day of school! Seniors feeling important; juniors wondering whether or not to start worrying about the Prom; sophomores relieved because they are no longer freshmen; and the freshmen too bewildered to even think.

Election time! Juniors and seniors vying for the most spirited campaign.

Hayrides—dances—Junior skating parties—football games.

Town-meetings led by the Student Council in which we expressed our thoughts without teacher supervision.

Rally day! The school turned out en masse to support the three mill levy and our homecoming game, also to honor our queen.

The girls showed us how to compete at Stunt Night: a county fair, a human orchestra, philosophy, and a scrapbook.

Mid-year exams in sub-zero weather, all of us hoped that our minds wouldn't freeze.

Clean-up Week—Annual Week—Courtesy Week—and best of all Religious Week with the impressive chapel service.

American Legion contest, just ask about our Bill of Rights.

Drama Festival—Annual Leap Year Dance—Winter Carnival; a good time for all.

Every pupil tests—something's always taking the joy out of life.

Senior Thespians beaming with success. Underclassmen vowing to be in the Senior play.

The Prom—the high point of all social activities! Forget the Prom?—Never.

The year's end! Seniors are glad and sad, too; juniors looking forward to senior life; sophomores wondering about the prom of 1941; freshman feeling very grown-up because they are now sophomores.

## Snapped Here And There

1. Yum!

2. "Step down"

3. Oh Henry!

4. Latin

5. Study Hall

6. Leap year dance

7. Solemn-Salomone

8. Meditation

9. Jitterbugs

10. Father and Son

11. "Did I tell you—"

12. Blow me down!



## One Hundred And Twenty Seniors

We, the class of 1940, being of sound mind and memory do hereby publish and declare this to be our last will and testament.

The class as a whole leaves to the class of 1941 the strength to survive a year of Senior activities, the Senior balcony, the O. S. U. intelligence test, and our cases of senioritis.

Emily Caster leaves her all-around ability to Jacqueline Young.

Bill Armington leaves his ability to set the girls' hearts fluttering to Dick Cheney.

Milly Knouff leaves her crown to Francis—after all it would be a shame to take it out of the family now.

Johanna Gockel leaves Bob to the person brave enough to try to do anything about it.

Audrey Mason leaves her interest in the "W" club to Louise Smart.

Flora McGurer leaves her vigor to Mary Hayward.

Patricia Meil bequeaths to Ruth Schlang her soft voice.

John Myers leaves his devotion to one girl to Jack Mooney.

Tom Quinn leaves his dancing ability to Jack McGarry—

Betty Sheridan leaves her "omph" to Ruth Kohl.

Jack Vohlers leaves his high scholarship rating to Karl Lemmerman.

Bud Jordan leaves Vivian Soules lonesome—

Catherine Riehl leaves her height to Connie Campbell.

Betty Rowland leaves her cheers to anyone who wants the job.

Henry Eaton leaves his solemnity to Robert Bornemann.

Lillian Daniels leaves all pianos to Jack Lee Peterson.

Allan Langstaff leaves the school without a trombonist.

Jane Duff leaves the exclusive right of her name to Jane Duff, freshman.

Jeanne Sherman leaves her popularity to Nan Sherman.

Jean Robinson leaves her way with the boys to Ann McCormick.

Gilbert Meinke leaves the Hi-Y to the very capable hands of "Willie" Stafford.

John Rosplock leaves his office to the Junior most fitted for it.

Lee Bidlingmayer leaves his two seater bicycle to Bob Smith.

Stewart Armington leaves his ability to glide through with the least amount of work to his brother Bob.

Claire Sprackling leaves her sophistication to Evelyn Lake.

## Relinquish Senior Prestige

Bob Mitchell leaves his football ability to Tom O'Brien.

Jean Clark leaves her ability to get places to Ruth Hague.

Bob Randall leaves his high pressure salesmanship to Jack Mertz, his partner in crime.

Howard Lange just leaves.

Patricia Doyle leaves to the teachers an accumulation of tardy slips.

Dorothy Hayward bequeaths her "book learning" to William Reno.

Bob Disbro his taxi service to a boy with plenty of gasoline.

Betty Jones her quietness to Pauline Schade.

Jean Hayden, her place in Physics class to any Junior girl desirous of it.

Nat Goodwin, his curls to Bill Petrovic.

Mike Manino and Ida Moritz leave together.

Charlotte Kruger, her German to Eddie Nichols.

Freda McClelland, her gymnastic ability to Mary Kruger.

Louise Hradecky, her typing to Beatrice McClelland.

Ed Marquardt leaves his "t" in Marquardt to his brother.

Anthony Salomone, the solo cornet music to Gordon Englebret.

Francis Cummings, his avoirdupois to Jim Robinson.

Mary Svec, her height to Janice Sulzmann.

Margaret Tough, her baton swinging to Betty Hamilton.

Ray Shaffer, use of pingpong table now that he isn't using it.

Bill Phillips, his solos in glee club to Leslie Swan.

Harriet Kirk, the honor study halls to all honorable underclassmen.

Dorothea Rossen, her serious dramatic roles to Marjorie Saxton.

Myron Pfeiffer, German Club parties to Eddie Sand.

Richard Mannino, his speed in track to Bill Long.

Ina Parker, Senior ticket sales to next year's business manager.

Bernice O'Brien, her admiration for Mr. Shankland to all juniors.

George Shaffer, his penmanship to Jack Mertz.

Kenneth Lloyd, his long legs for hurdle jumping to Bill Doyle.

In witness whereof, we have hereto subscribed our names and affixed our seal this thirty-first day of May, in the year of our Lord One Thousand Nine Hundred and Forty.

THE CLASS OF 1940





## SENIOR B's



Top Row—Arnold Southall, Bob Zeigler, Rene Van Lacke.

2nd Row—Walter Sigsby, Joe Bechtol, Bob Feenstra, Ted Carosello.

3rd Row—Tony Scarola, Frank Trippi, Mae Eckart, Jane Jacoby, Mike Borelli, Dominic May, Delores Johnson.

3rd Row—Tony Scarola, Frank Tripepi, Mae Eckart, Jane Jacoby, Mike Borelli, Pinta.

Not pictured—Roger McKain.

Here is a group of Willoughby students that has suffered the responsibilities of seniors, and yet at the same time has not enjoyed the privileges of senior prestige. It is the Senior B's that for three and a half years have been shifted back and forth from one class to another. They can boast no class officers or faculty advisors of their own, but next year they will be the main stay of the senior class and will be looked up to for advice and leadership during their last half-year.

## The Junior Class Upholds Prestige Of Predecessors



### JUNIOR CLASS OFFICERS

Wayne Wells .....President  
Peggy McCann .....Vice-President  
Arline Clayton .....Secretary  
Karl Lemmerman .....Treasurer

Calls of "Out of our way, Freshman" rang through the school corridors early this fall as this group of students became upperclassmen. Being Juniors brought in added responsibilities which were met with all the vitality and gusto that typifies these students.

Election time—campaign time and what a campaign it was—with the majority getting on the "Well's Wagon."

Elections over and aided by their advisors, Mrs. Florine Carroll, Mr. Robert Wendorf, Mrs. Mildred Boley, and Miss Ellen Buyer, the serious work of planning the prom began. From then on "Prom" became the most important word in every Junior's vocabulary.

Skating parties, a winter carnival dance, noon movies, dry cleaning concession, and class dues all for the one great cause, the Prom, May 10, 1940. This is one date in history that every Junior will always remember—The Prom, held at Mentor Harbor Yacht Club.

While looking forward to their senior year, this class can always look back on its Junior year with a feeling of pride and satisfaction.





### HOME ROOM 13

First Row: Regina Smith, Vivian Soules, Muriel Swain, Betty McClure, Beatrice McClelland, Janice Raus, Janice Sulzmann, Marian Smith, Margaret McCann, Pauline Schade.  
 Second Row: Miss Ellen Buyer, Doris Parker, Marjorie Saxton, Mary Quinn, Marie O'Brien, Marian Mills, Mary Prokop, Rita Streaker, Ruth Sulzer, Paula Rettig, Doris O'Brien, Jessie Mae Marble, Edwin Sigsbey.  
 Third Row: Leslie Swan, William Reno, Herman McMahan, Russell Sulzmann, William Sandman, Edward Sand, Robert Meil, Robert Smith, Ralph Royer, Edward Nichols, Robert Murphy, Thomas Roediger, Merle Stafford, Robert Stoiber.  
 Fourth Row: Herbert Somnitz, Louis Peters, Robert Marquardt, John Robson, William Robinson, Frank Southwick, James Schomaker, John Myers, James Scanlon, Jack Mertz, Wesley Piquolet, William Petrovic, Charles Sand, Jack McGarry, George Schminky.



### HOME ROOM 14

Front Row, Left to Right: Frances Beckwith, Winifred Centner, Ruth Charske, Kathryn Dietz, Marjorie Abbott, Miriam Blecher, Jean Conley, Margaret Cone, Laura Cone, Cecilia Borelli.  
 Second Row: Bob Brown, Bob Bauer, Paul Collier, John Ely, Norrene Du Rant, Mary Brady, Irene Boytz, Ruth Briggs, Jule Claywell, Carol Decile, Arline Clayton, Connie Campbell, Jack Campbell, Jonathan Dunn, Ted Brunson, Mrs. R. E. Carroll.  
 Third Row: Bob Burke, Charles Cattel, Bob Coughlin, Wilbert Clayman, Carlton Burkholder, Lee Cribfield, Jack Benjamin, Jim Davis, Bob Angus, Lynn Dana, Richard Brain, Blaine Bolton, Bill Coughlin.

### HOME ROOM 8

Front Row: Marianne Heath, Mildred Green, Helen Irwin, Margaret Johnson, Frances Knouff, Pauline Klingensmith, Gloria Granger, Betty Hamilton.  
 Second Row: Frances Funk, Delores Fletcher, Marjorie Gear, Mary Jones, Jane Goodrich, Wanda Glazar, Lorna Howard, Delphine Fatica, Marie Garrison, Lloyd Jones.  
 Third Row: Mr. Robert Wendorf, Bob Janos, Angus Johnson, Charles Lemr, Pat Hendricks, Richard Janos, Bob Hawkins, Bill Jepson, Bob Fryauff, Hadley Kline, Walter Fraser.  
 Fourth Row: Karl Lemmerman, Harry Goodyear, Mischino Fatica, Elmer Kaps, Tom Johnson, Hugh Freeman, Jack Holden, Stewart Jarvis, Bob Harrison, Byron Hunsicker.

### HOME ROOM 4

Front Row: Eileen Brown, Jane Todd, Lucille Tagliamonte, Jean Ely, Mary Coleman, Geraldine Loucks, Edith Carrick, Dorothy Tatman.  
 Second Row: Delores Lutman, Evelyn Long, Clara Venditti, Ruth Matthews, Hester Hauser, Maxine Woods, Marjorie Wilcox, Mrs. Mildred Boley.  
 Third Row: Clifford Coleman, Robert Lucal, William Welch, Roy Wood, Wayne Wells, Willis Wells, Gordon Englebret, Forrest Cantrell, George Tegner, Thomas Vitantonio.





## Sophomore Class Fulfills Expectation Of Its Officers

### SOPHOMORE CLASS OFFICERS

President ..... Joseph Vohlers  
 Vice President .... Margaret Havens  
 Secretary and Treasurer  
                                  Richard Simonson

## Sophomores

This year these students were a part of the milling crowd that scared freshmen. A summer's vacation had certainly increased their self-confidence.

After a few months of school, the class was organized. They held an election, and Joe Vohlers was the successful presidential nominee. With class officers they felt that they were definitely superior to the freshmen.

Miss Adele Knight, Miss Sylvia Simon, Mr. Harvey Helm, and Mr. Archie King guided these sophomores into many more activities. This year they held a real place in school life, scholastically and socially.



### HOME ROOM 21

Bottom Row: Left to right: Margaret Havens, Martha Klingensmith, Alice Gibson, Jessica Lindsley, Phyllis Huthmacher, Virginia Granger, Edna Jacoby, Florence Leonello, Mary Kostrab, June Hoffman.

Second: Miss Adele Knight, Eleanor Koren, Doris Jones, Yvonne Lemr, Helen Hayward Phyllis Zerby, Bill Kral, Helen Hilts, Rita Hearn, Wilma Davis, Anne Ginevra, Dorothy Kruger.

Third Row: Glen Goodyear, Charles Herendeen, Jack Jepson, Bill Johnson, Henry Groathe, Jim Green, Bill George, Joe Horvath, Eugene Gehri, Bill Kennedy, Richard Kruger, Milton Janezic.

Top Row: Lawrence Gregory, Bob Henderson, George Klco, Wilson Harvey, Emerson Heinz, Dale Goodrich, Bill Long, Albert Hanson, Dick Goodman, George Gacsi, Charles Heywood.

Absent: Gwyneth Goodwin, Ray Lesler, Roy Hulsman.

### HOME ROOM 22

Front Row, Left to right: Evelyn Edwards, Mary Angelotti, Betty Deahl, Elinor Cozens, Nadine Fraunfelder, Ester Arndt, Barbara Bolton, Evelyn Carl.

Second Row: Mr. Harvey Helm, William Doyle, Lucille Cuthbertson, Helen Barnett, Dotty Fairley, Helen Cukor, Betty Flynn, June Conley, Margaret Davidson, Theresa Frazza, Vernon Barnes.

Third Row: Joseph Brunson, Dennis Daniels, Jack Boor, Gene Borrelli, Bud Brown, Raemon Buck, Robert Burden, Louis Angelotti, Donald Fold, Donald Crawford, Joseph DeMila.

Fourth Row: Franklin Curtis, Bud Colburn, Dave Carosello, Jack Coleman, Clifford Everett, Donald Bard, George Dremann, Tom Furlong, Lyle Daniels, Fred Forsythe, Gerald Calloway.

Absent: Margarite Alexander, Betty Freeman, Tony Frazza, Jack Clair, Frank Ferguson, Anthony Fatica, John Bistarkey, George Bannerman, Lucille Colburn, Evelyn Duncan.





### HOME ROOM 23

First Row, Left to right: Margery Mason, June Mathews, Marie Petrovic, Doris Neil, Katherine McGonnell, Helen Rogers, Emma Mitchell, Ruth Peddicord.  
 Second Row: Robert Reidl, Douglas Peterson, Marion Rugnetta, Vesta Lozier, Jane McClure, Betty Mizerak, Laura Murphy, Jane Mathews, Francis Rolph, Marian Meyers, Jim Merritt.  
 Third Row: Mr. Archie King, Joe Mizerak, Jimmy Robinson, Bob Rosplock, James Ramsay, Nicholas May, Chester Lucas, Donald Metzung, Donald Power, Jack O'Brien, Arnold Paschul, Louis Pallak.  
 Fourth Row: Donald MacLennan, David Nellies, George Pallak, George Palinkas, George Rose, Jack Lee Peterson, Karl Paul, John Ryan, Tom O'Brien, Joe Roe, Edward Rider.

### HOME ROOM 11

First Row: Louise Smart, Margaret Scaglione, Betty Wilcox, Dorothy Spears, Elsie Wer- man, Betty Schwartz, Marjorie Schomaker, Evelyn Schaerr.  
 Second Row: Miss Sylvia Simon, Esther Thompson, Ralph Sidewand, Jay Yoder, Kenneth Totten, Bud Stienbrink, Bill Zimmer, Forest Southwick, Irene VanLacke, Violet Southall.  
 Third Row: Donald Wallace, Stewart Terrill, Bill Wright, Ted Wallace, Howard Simon, Raymond Tkautz, Harvey Sigsbey, William Wilde, Harold Shaw, Clifford Servais.  
 Fourth Row: Richard Simonson, Bob Tittle, Howard Wawrenek, Joseph Vohlers, Harold Witherite, Angelo Stillisano, Roy Woods, Robert Thompson, Dale Witcraft, Robert Stewart, George Trimmer, Henry Schenk, Richard Stewart.

## The Freshman Class Eagerly Looks Foward In Anticipation



FRESHMAN HOME ROOM  
PRESIDENTS  
Phyllis Brown .....25  
Dora Heidt .....12  
Bob Edwards ..... 7  
Jack Mooney .....24  
Donald Williams ....18

Last September a group of timid students entered the portals of Willoughby High School for the first time. At first a look from an upperclassman made a freshman draw into a shell; but by mid-year exams they were known by their pranks, not their timidity.

Their class party must have given them courage for freshmen began competing with their superiors for school honors. Some members became well-known in various activities, and they have plans to hold places now held by seniors.

Under the able direction of Miss Cleo Sawyer, Miss Margaret Gibbs, Miss Margaret Broderick, Mr. W. O. Barker, and Mr. Herbert Lake, this class seems destined to prove its ability and superiority as a group of Willoughby students.



### HOME ROOM 7

Front Row, Left to right: Ada Green, Doris Funk, Mary Frew, Louise Greifenstein, Jayne Duff, Louise Glatch.  
 Middle Row: Tom Green, Bob Edwards, John Goodrich, William Doncevic, Ben Falstreu, James Edwards, Richard Duncan.  
 Back Row: Mr. Herbert Lake, Melvin Groathe, William Haase, Charles Detweiler, William Ely, Kenneth Fletcher, Jerry Gill, Bob Gunvalsen.  
 Absent: Hans Weinhold, Bob Gear.





**HOME ROOM 24**

First Row: Margaret Myers, Ruth Schlang, Mildred Merritt, Margaret Neboysky, June Roepke, Elizabeth Neely, Margaret Ogilvie, Laura Nichols.  
 Second Row: Miss Margaret Gibbs, Addilyn Parker, Cynthia Robson, Ruth Moore, Jean Rose, Jean Norris, Marjorie Schmidt, Ethel Roe, Betty Ann Norton.  
 Third Row: Clifford Rayl, Russell Phillips, Robert Nungesser, Leonard Rife, Arthur Moff, Robert Pintar, Edward Myers, Clifford Morgan.  
 Fourth Row: Aloysius Schleicher, Albert Petitt, Robert Murphey, Howard Mitchell, Albert Pintar, Jerry Robison, Miles Ruple, Thomas Mele, Jack Mooney, Leonard Rockwell, Philip Schaffer.



**HOME ROOM 25**

Bottom Row, Left to right: Barbara Bruce, Bernice Clement, Florence Baker, Phyllis Brown, Evelyn Chase, Alice Berndston, Dorothy Brichford, Mary Clarke.  
 Second Row: Mr. W. O. Barker, Arthur Buckles, Helen Brunson, Dorothy Cable, Eileen Clifford, Kenneth Bistarkey.  
 Third Row: Bob Anderson, Bennett Daniels, Charles Cooper, Tom Deakins, Frank Boytz, Bob Bowen, Medford Booker, James Armington.  
 Top Row: Alfred Cornwall, William Behnke, Richard Cheney, Ralph Call, Clarence Conklin, Kenneth Dennison, Clifford Bancroft, Virgil Bixel.

**HOME ROOM 12**

Top Row: Suzanne Kunzman, Alice Kirk, Judy Jarvis, Jean Henry, Laura Hayden, Louise Keidel, Jean Janz, Juanita Loyer.  
 Second Row: Evelyn Lake, Edith Marquardt, Doris Heidt, Dora Heidt, Ann McCormick, Angie Mancini, Barbara MacLennan, Mary McGarry, Evelyn Heinz, Mary Hayward.  
 Third Row: Ruth Kohl, Paul Lawson, Phillip Matowitz, Herbert Kruger, Bill Lawrence, Tom McNamara, Dick Hamilton, Joseph Kostrab, Gloria LaGruth.  
 Fourth Row: Bill McCullough, Paul Hartung, Rodney Johnson, Bob Hirst, Robert Maltry, Lester Heinz, John Loucks, Clifford McFadden, Bob McArthur, Edward Hauptkorn, Forrest Lago, Herbert Hollingshead, Ralph Hara.  
 Not pictured: Ruth Hague, Miss Margaret Broderick.

**HOME ROOM 18**

First Row, Left to right: Margaret Zever, Barbara Smilan, Lois Wills, Loretta Winlund, Marion Wells, Buford Walker, Norma Wells, Marjorie Zimmer.  
 Second Row: Miss Cleo Sawyer, Herbert Streaker, Nannette Sherman, Mary Jane Wagner, Herta Wienhold, Eleanor Sulzer, Theodore Setzer, Donald Waseleski.  
 Third Row: Carl Setzer, Kenneth Stafford, Ralph Wilde, John Shaw, Billy Sowers, Merton Smith, Al Wilson, Otis Shreve, Albert Southwick.  
 Fourth Row: Elwood Wolf, Alvin Smith, Rollin Totten, Donald Williams, Robert Wills, James Werner, George Thurman, Charles Shannon, Billy Zanzig, Neal Shaffer.



# Caught By The Roving Eye

Grind us a pound  
Hi-Y dance  
"Who—me?"  
Jolly Junior  
Caught—one dignified senior  
Chain gang  
Stop taking pictures in my class!  
Ain't love grand?

Model  
Band masters  
Noon dancing  
You should budget your annual—  
Senior—?  
Einstein II  
Daniel Boone McCormick  
Clamour girls



PORTFOLIO TWO

PORTFOLIO OF SCHOOL ACTIVITIES



## Practicing The Art Of Good

### National Honor Society

Scholarship, leadership, service and character are the requisites upon which membership in the National Honor Society is based.

In the fall of 1939 the ten seniors pictured were given pledge keys to this honoring society of secondary schools.

In the spring more seniors and some juniors had earned keys. Miss Ellen Buyer, sponsor, and executives Dorothy Hayward, president, and Jean Hayden and Audrey Mason, welcomed H. Kirk, G. Hauptkorn, J. Gockel, F. Gill, J. Duff, R. Johnson, L. Hradecky, H. Eaton, seniors, and A. Clayton, K. Lemmerman, J. Young, R. Bornemann, D. Tatman, R. Bauer, M. McCann and C. Lemr, juniors. In next year's group the above juniors will be "the lettermen".

Through the efforts of the National Honor Society, a new honor roll system was originated in the school this year. As this club continues to grow, may its influence and fine work spread throughout the school.

### Student Council

The highly efficient hall guard system—the greatly desired honor study halls—those interesting assemblies of outside talent.

For these improvements—the Student Council may be thanked.

Reorganized this year under Mr. Alan Shankland, the council started the year by conducting town meetings presided over by President Jack Vohlers.

New representatives were elected at the semester; Vice President Patricia Meil organized the hall guard system, and Harriet Kirk started the honor study halls.

At present Milly Knouff, secretary, is overseeing the publication of a hand book. Lillian Daniels, treasurer, and Miriam Bletcher are in charge of candy sales, and Jack McGarry, sergeant at arms, rounds up pass offenders.

With a year such as this behind it, the council is planning great things for the coming one.

## Government . . .

### NATIONAL HONOR SOCIETY

Front Row: Jean Hayden, Dorothea Rosson, Audrey Mason, Mary Ellen Brillinger.  
Second Row: Miss Ellen Buyer, Jeanne Sherman, Emily Caster, Jack Vohlers, Lillian Daniels, Dorothy Hayward.  
Not Pictured: Betty Jones.



### STUDENT COUNCIL

Front Row—Mr. Alan Shankland, G. Meinke, E. Caster, M. Stafford, I. Parker, J. Todd, J. Robinson, V. Southall, P. Meil, M. Knouff, J. Vohlers, L. Daniels.  
Standing—M. Gear, A. Buckles, J. Rosplock, G. Englebret, M. Havens, J. Marble, G. Borrelli, B. Rosplock, B. Sowers, J. Mooney, B. Hirst, W. Wells, H. Kirk, S. Boor, M. Frew, C. Lemr, M. Blecher, A. Clayton, J. McGarry, S. Armington.



## Learning The Art Of Friendship

### Friendship Club

In order to live up to its motto, "To find and give the best," the Friendship Club each year plans activities to represent the three sides—spiritual, social, and educational—of its symbolic triangle.

Planning the program in consideration of the club's three-fold purpose, instructive meetings were held each month, a religious week was sponsored with the Hi-Y Club, and monthly activities were planned.

Although educational, the sixth period meetings were also entertaining. We shall not soon forget—

- fun at our "40 Singing Seamen" meeting
- attractive coiffeurs of our co-eds after the beauty-shop demonstration
- our student models at the Spring Fashion Show
- the clever skit presented at the etiquette meeting to portray correct manners.

Looking back over the year's activities we remember—

- pigtailed and bustled of the informal initiation
- the impressive candlelight service
- stunt night, the seniors taking honors
- being "Dad's pal" at the Father-Daughter banquet
- Dietz and Charske's impersonation of Wimpy's cow
- informal discussions over our religious problems
- effective Chapel Service with its churchlike solemnity
- all of Robin Hood's merry band at the Sherwood Forest Party
- dainty boutonnieres for mother at the tea
- our new Cabinet's delight in receiving their roses, symbols of their new offices

—the climaxing event—the Spring Formal—with its pastel net formals amid a nautical background, dress flags and all!

These are just some of the many things which will remind us of the year 1939-40. Regretfully we leave it, but look ahead toward wider horizons with a steadfast purpose, strengthened by our association with the Friendship Club of Willoughby High School.

## And Organization . . .

### CABINET

Seated: Arline Clayton, Dorothy Tatman, Mary Ellen Brillinger, Emily Caster (Pres.), Marjorie Gear, Elizabeth Jones, Jean Robinson, Dorothy Hayward.  
Standing: Audrey Mason, Lillian Daniels, Mae Eckart, Miss Adele Knight, Miss Ethel Spaller, Jacqueline Young and Johanna Gockel.



The cabinet  
Senior Stunt  
Wimpy party  
The Fleets In

Beauty lecture  
Wimpy's cow  
Formal initiation

## Recognizing The Art Of

### Boys "W" Club

Bob Mitchell, captain of the football team, Arnie Southall, all Lake Shore end, Jack Vohlers, stalwart center, and Gil Meinke, linesman, are the officers of this club whose members must all earn their letters in some sport and participate in another to be eligible.

The club is honorary and sponsors only one activity during the year—its game with the more hardy members of the faculty.

Jean Smith, sponsor, leads these boys in their activities.

### Girls "W" Club

The slogan "to be" expresses the desire of every "W" girl to be the best possible type of high school girls.

Having gained her "W" by making the required 250 points of their athletic program, she works toward the ideal of developing leadership, good sportsmanship, the right attitude, and a certain amount of skill.

Under its advisor and founder, Miss Ethel Spaller, the club is a self supporting organization whose social activities include monthly parties, an annual banquet, picnics and one glorious week-end at the lake.

## Achievement And Leadership . . . .

### BOYS' "W" CLUB

First Row—George Shaffer, Gil Meinke, Charles Lemr, Bob Zeigler, Arnie Southall, Jack Vohlers, Bob Mitchell, Dick Manino, Kenny Lloyd.

Second Row — Angie Stillisano, John Myers, Frank Gill, Jack McGarry, Willie Stafford, Bob Disbro, Eugene Judkins, Lloyd Jones, Milton Murphey, Bob Meil.

Third Row—Mike Borrelli, Bob Marquardt, Bill Long, Don Bard, Bill Robinson, John Myers, Jim Davis, Homuth Sidewand, Coach Jean Smith.



### GIRLS' "W"

Sitting:—Jeanne Sherman, Lillian Bozeglav.

Second Row—Milly Knouff, Jean Robinson, Doris O'Brien, Marie O'Brien.

Third Row—Dorothy Tatman, Mary Ellen Brillinger, Audrey Mason, Muriel Swain.

Last Row—Freda McClelland, Betty Heitzman, Charlotte Call. Sponsor: Miss Ethel M. Spaller.

## Learning The Arts Of Discussion

### French Club

An active group, this! One whose activities from the start caused observers to stop and comment, "What's the matter with those boys and girls?" "The ones wearing smocks, berets, and large bows!" "Are we on the Left Bank?"

No, it's French club initiation and all who are eligible are most anxious to get into a club where meetings are such fun and yet really helpful in perfecting their knowledge of the language.

As well as its regular monthly meetings under Mr. Herbert Lake, advisor, and President Betty Jones they had two special meetings with Painesville's French Club, were winners of the basket ball classic and climaxed the year with a grand picnic on Mr. Lake's farm.

### German Club

Sprechen Sie Deutsch! If you do, you are eligible for membership in Miss Sylvia Simon's German Club.

Whether you are an expert or a novice, you may join this club and enjoy their social activities and the programs of the only club of its kind in Lake County.

Meetings are conducted by President Myron Pfeiffer and are usually of a social nature.

The big event of the year was the basketball game which they and the French Club played—incidentally they lost!

## With Languages . . .

### FRENCH CLUB

First Row (seated), Left to right—Bernice O'Brien, (secretary) Elizabeth Jones, (president), Jack Vohlers (treasurer), Mildred Knouff, Jean Robinson, Iledmor Fields, Betty Sheridan, Lillian Daniels, Betty Rowland.

Second Row—Bob Fryauff, Mary Ellen Brillinger, Emily Caster, Jane Duff, Dorothy Hayward, Bill Phillips, Claire Sprackling, Pat Meil, Ruth Henderson, Jean Clark, Howard Lange, Jean Hayden, Mr. Herbert Lake, Richard Johnson, Charlotte Kruger (vice president).

Back Row—Bob Disbro, Henry Eaton, John Robson, Wes Pignolet, Catherine Riehl, Dorothy Harrold, Bob Randall.

Absent—Norman Robson, Ruth Cuthbertson, Frances Gallagher.



### GERMAN CLUB

First Row—M. Smith, M. Hanks, B. Hamilton, C. Lemr, B. Sheridan, B. Petrovic, A. Clayton, B. Randall, B. Armington, J. Gockel, M. Pfeiffer.

Second Row—E. Nichols, B. Jepson, H. Houser, W. Glazer, J. Young, D. Parker, C. Kruger, P. McCann, J. Langel, B. Jordan, Miss Sylvia Simon.

Third Row—G. Tegner, F. Cummings, J. McGarry, C. Sand, E. Sand, J. Bechtol, B. Meil, B. Bornemann, P. Hendricks, J. Robson, V. Schnieder.

# We Develop The Cult-

## Orchestra

The band doesn't give all instrumentalists a place; so we have an orchestra directed by Mr. Charles Ruddick. The orchestra is growing, and in a few years we hope it will equal our band. The orchestra opens all of our evenings of school dramatic entertainment. They have two concerts both with our vocal groups. The first semester program is our annual "Christmas Fantasia" and the last semester, the spring concert.

## Band

The greater share of us had a three month summer vacation but our musical instrumentalists had practice sessions each week.

The marching band's practice under Mr. Charles Ruddick and Mr. Archie King began during the hot days of August and ended during stinging cold at Thanksgiving. The results of this practice, snappy marching and original formations, gave our football games pageantry and color. Surprise marching formations were made possible by individual lights on each hat. Thanksgiving displayed brilliant shoulder cords which dress up the uniforms.

Their first concert was at Christmas time. Others followed at the township schools to acquaint people with their work. They also took part in some festivals: Euclid Central's to hear Cleveland Heights; Fairport's Practice Festival; and the Northeastern Ohio Festival at Kent. The final spring concert is somewhat of an exam night for bandsmen; this year's concert, the band's tenth, was well worth hearing, and the improvement over other year's showed that much work had been done by the musicians and their director.

### OFFICERS

- President ..... Allan Langstaff
- Vice-President ..... Bob Randall
- Secretary ..... Jacqueline Young
- Advertisers .... Karl Lemmerman and Anthony Salomone
- Librarians ..... Jean Rose and Martha Klingensmith

# ural Art Of Music . . . .

### ORCHESTRA

Violins: Suzanne Kunzmann, Louise Smart, Bill Phillips, Kenneth Bistarkey, Anthony Fatica, Ralph Wilde, Evelyn Lake, Doris Neill, Nat Goodwin, Ruth Kohl, and George Pallak.  
 George Gasci, Cello; Bob Murphey, Flute; Judy Jarvis, Saxophone; John Bistarkey, Clarinet; French Horns: Bill Zanzig, Russell Sulzmann; George Dremann, Baritone; Trumpets: Hester Ann Houser and Anthony Salomone; Bob Bowen, Trombone; Lillian Daniels, Piano; and Mr. Charles Ruddick, Conductor.



### BAND

First Row: Francis Cummings, Bud Jordan, Bob Harrison, Karl Lemmerman, John Ely, Bob Bornemann, Jack Peterson, Arlene Clayton, Bob Murphey, Betty Jones, Jacqueline Young.  
 Second Row: Iledmor Field, Marie Petrovic, Kathryn Dietz, Delores Fletcher, Milton Murphey, John Bistarkey, Bill Wilde, Otis Shreve, (missing) Russell Sulzman, Wayne Wells, George Dremann, Bill Sandman, Lee Bidlingmayer, Lillian Daniels, Jean Rose, Ruth Charske.  
 Third Row: Mary Jones, Janice Sulzman, Lawrence Gregory, Delores Lutman, Helen Barnett, Kenneth Kruger, Anthony Salomone, Gordon Englebret, Myron Pfeiffer, Louis Angelotti, Henry Eaton, Bob Bowen, Barbara Bolton, Henry Groathe, George Gasci, Allan Langstaff, Bill Garrett.  
 Fourth Row: Jane Todd, Connie Campbell, Hadley Kline, Hester Houser, Bill Petrovic, John Rosplock, Bill Meyers, Bob Henderson, Betty Mizerak, Bob Burke, Eugene Gehri, Bob Randall, Mr. Ruddick, Peggy McCann.

## Developing The Ancient

### Dramatic Club

Fall found Thespian aspirants nervously reciting poems and cuts during tryouts for the O-An-Bee Play Shop. A lucky few received membership cards. Then members began work.

Both new and old Thespians learned much about stage technique and many dramatic principles in monthly meetings. An adaptation of "Othello" was enjoyed by the club and English literature students in February.

"Afterwards", starring Milly Knouff and Bill Armington was first given at our Drama Festival and later entered in the one-act play tournament at Kent.

April brought "Pink and Patches", a favorite with the Play Shop.

The Play Shop directed by Miss Cleo Sawyer, belongs to the National Thespian Society, and the officers this year were Milly Knouff, President; Karl Lemmerman, Vice President; Lillian Daniels, Secretary; and Jacqueline Young, Treasurer.

### Glee Club

Our vocal groups this year have had a hard time keeping together, since one thing after another befell their teachers. Finally Mrs. Betty Fisher took them in hand; but even she broke her wrist. However, the work went on.

There are three groups: the girls' glee club, the boys' glee club, and the mixed chorus. During the first semester they did very little, but at Easter the girls started activities rolling by singing impressively at our chapel service.

In April all of the groups went to Andrews for an exchange concert. In May they exchanged concerts with Mentor.

Spring concert time brought much work, but also a feeling of accomplishment after it was over.

Commencement singing brought their year to a successful close.

## Art Of Play Acting . . .

### DRAMATIC CLUB

First Row—Jeanne Sherman, Emily Caster, Miss Cleo Sawyer, Bob Randall, Patricia Meil, Peggy McCann, Lillian Daniels, Jacqueline Young, Dorothea Rossen, Ray Shaffer, Marjorie Saxton.

Second Row—Connie Campbell, Josef Floric, Mildred Knouff, Wayne Wells, Roy Wood, Jim McCormick, Bob Bornemann, Karl Lemmerman.



### GLEE CLUB

First row—L. Daniels, J. Todd, V. Soules, M. Johnson, J. Young, E. Deahl, E. Carl, M. Schomaker, J. Henry, L. Griefenstein.

Second Row—B. Rowland, M. Wilcox, H. Barnett, B. Wilcox, R. Kohl, E. Lake, E. Arndt, B. Flynn, F. Knouff, M. Mills, B. Sheridan, J. Duff, M. McGarry, R. Hague.

Third Row—Mrs. Betty Fisher, J. Gill, B. Schwartz, E. Schaerr, M. Alexander, D. Harrold, C. Sprackling, P. Meil, A. McCormick, B. Funk, H. Kirk, B. Jones, B. O'Brien, B. Bruce, D. Graham, R. Phillips.

Fourth Row—A. Salomone, B. Zimmer, B. Phillips, J. Mertz, B. Jordan, J. Peterson, R. Royer, A. Langstaff, M. Fatica, J. Florio, H. Eaton, B. Randall, H. Lange, J. Bechtol, G. Trimmer.

## Learning To Protect Selves

### Fencing Club

If the day ever comes when once more men must defend their ladies with their swords, Willoughby's gallants are ready. But—alas and alack—the days of chivalry are past, for the girls can defend themselves.

Yes, the Fencing Club, newly organized by Joe Florio and sponsored by Mr. Jean Smith, has a great many members of the fair sex in its ranks.

On Thursday nights Joe Florio's "Cardinal Guards" compete with the "King's Musketeers" under Francis Cummings with the vanquished entertaining the victors at a social meeting once a month.

### Conservation Club

Although not so widely known as other clubs in the school because it sponsors no social activities, the Conservation Club under Mr. W. O. Barker is a very popular one.

Organized for the purpose of doing its bit to conserve nature's beauties, it holds regular monthly meetings to discuss means by which it may obtain its object.

Wildlife stamps were sold during National Conservation Week; and as Spring came on, hikes were held in the country and the Metropolitan Parks. At present the club has taken as its project the beautification of our high school campus.

## And Others . . .

### FENCING

First Row—Joe Bechtol, Betty McClure, Audrey Mason, Josef Florio, Mischino Fatica, Johanna Gockel, Charlotte Call, Jay Reeves.  
Second Row—Marie O'Brien, Mary Prokop, John Langel, Phillip Matowitz, Francis Cummings, Bill Kral, Richard Mattern, Violet Mae Southall, Doris Parker.  
Third Row—Coach Jean Smith, Ann McCormick, Lee Bidlingmayer, Bob Murphy, Glenn Booker, Clark Lape, Ruth Hague.  
Fourth Row—James Stewart, Dale Goodrich, Bob Harrison, Richard Goodman, Bob Henderson.



### CONSERVATION CLUB

First Row, Left to right—Jane Matthews, Emma Mitchell, Marjorie Schomaker, Betty Schwartz, Ralph Sidewand, Doris Neill, Stanley Boor, Donald Metzung, Elsie Werman, Barbara Bolton, Evelyn Schaerr, Muriel Swain.  
Second Row: Irwin Buckles, Margaret Johnson, Doris Jones, Helen Cukor, Mary Kostrab, Marie Petrovic, Ruth Peddicord, Esther Thompson, Betty Flynn, Eleanor Koren, Lucille Cuthbertson, Helen Hayward, Yvonne Lemr, Frances Rolph, Jane McClure, Louise Smart, Beverly Wilcox, Rita Hearn, Dorothy Spears.  
Third Row—Walter Fraser, Jim Robinson, Bill Wright, Bill Wilde, Dennis Daniels, Jack Boor, Jim McCormick, Betty Mizerak, Florence Leonello, Elinor Cozens, Evelyn Carl, Lucille Colburn, Bob Reidl, Douglas Peterson, Harold Shaw, Charles Marble, Donald MacLennan, Lawrence Gregory, Mr. W. O. Barker.  
Fourth Row—Eddy Rider, George Gasci, Bob Henderson, Bud Colburn, George Bannerman, Roy Wood, Joe Vohlers, Bob Tittle, Howard Wawrenek, Emerson Heinz, Dale Goodrich, Bob Thompson, Bob Myers, Dale Witcraft, Franklin Curtis, Henry Schenk, Eugene Gehri, Karl Paul, George Kico, Don Powers, George Pallak.

## Clubs Typify The Art

### Searchlight

#### SEEN:

Homuth Sidewand working on his "Sport Splashes—nice while they lasted—  
 Helen Clifford always willing to do last minute typing.  
 Jack McGarry having trouble with his spelling.  
 Flora McGurer and Roberta Mitchell being private secretaries.

#### HEARD:

Jane Duff—"Who'll be the girl of the week?"  
 Anthony Salomone—"Why can't Meil and I write a dirt column?"  
 Bob Mitchell—"Let Willie take Hi-Y this week!"  
 Tom Quinn—"It's Bob Bornemann's turn to write the editorial."  
 Miss Broderick—"Don't forget the deadline's at 8:30 Tuesday morning."  
 Jacqueline Young—"Anything besides Friendship Club this week?"  
 Roger McKain—"Splash! Bang! Just heard."

### Commerical

#### CREDITS:

Fine advisors Miss Margaret Gibbs and Mrs. Mildred Boley.  
 Enthusiastic members imbued with the desire to do all they can to make themselves ready for the business world.  
 Exceptionally fine monthly programs such as demonstrations of speed typing and the proper method of using the telephone.  
 Social activities—entertaining Mentor students, a fine roller skating party and the never to be forgotten dinner dance in May.  
 Competent officers under President Nat Gillette

#### DEBITS:

The year is so short for all the fine things this club would like to do.

## Of Journalism . . .

#### SEARCHLIGHT CLUB

Seated—Helen Clifford, Robert Meil, Tom Quinn, Robert Bornemann, Roberta Mitchell.  
 First Row—Miss Margaret Broderick, Robert Mitchell, Jacqueline Young, Roy Wood, Flora McGurer, Merle Stafford.  
 Last Row—Forrest Cantrell, Jack McGarry, George Tegner, Anthony Salomone.  
 Not Pictured—Harriet Kirk, Roger McKain, Jane Duff, Homuth Sidewand.



#### COMMERCIAL CLUB

First Row—Mae Eckart, Betty Lou Heitzman, Virginia Perrin, Ina Parker, Winifred Dann, Charlotte Call, Miriam Blecher, Vivian Soules, Marian Heath, Jean Conley.  
 Second Row—Miss Margaret Gibbs, Connie Fatica, Carrie Decile, Marie Prokop, Marie Garrison, Mary Svec, Delores Fletcher, Evelyn Long, Delores Lutman, Helen Barnett, Helen Clifford, Clara Venditti, Delphine Fatica, Pauline Burroughs, Mrs. Mildred Boley.  
 Third Row—Esther Arndt, Eileen Claywell, Lucille Colburn, Helen Cukor, Jane McClure, Marion Mills, Marjorie Abbott, Evelyn Edwards, Elinor Cozens, Annamae Emminger, Ella Jean Peterson, Delores Johnson.  
 Fourth Row—Betty Mohun, Martha Klingensmith, Thelma Vickroy, Louise Hradecky, Elsie Werman, Jane Jacoby, Marion Schultz, Lucille Tagliamonte, Cecilia Borrelli, Jessica Lindsley, Dorothea Rossen, Laura Cone, Alice Anderson.  
 Top: Dick Mattern, Jack Benjamin, Nat Gillette, Ray Shaffer.  
 President . . . . . Nat Gillette  
 Vice President . . . . . Miriam Blecher  
 Secretary . . . . . Mae Eckart  
 Treasurer . . . . . Betty Lou Heitzman

## Learning To Take Or To Make

### Take-N-Easel Club

Art classes, more than any other in the school, are composed of pupils interested and eager to advance in the subject.

Spurred by this zeal they have formed the Take-N-Easel club which started its year by painting various scenes about the school.

Other activities included the art exhibits which were put on in the school library, fine posters for every school occasion, and the really excellent chapel window which was made for Religious Week.

### Camera Club

Candids, our theme, is partly due to the unusual interest shown in photography at our school. Mr. J. B. Woodside and his camera and Mr. Allen Shankland's enthusiasm have helped a great deal to give the ball of interest a push.

The first day of school gave the camera fiends opportunities to snap bewildered freshmen, and from that day forward they appeared seemingly from nowhere to snap you while at work or play. All of their time isn't spent taking pictures. Eventually they have to stop to develop and to print their film to see just whom they have captured. At other times they take time to learn about different types of photography, how to get unusual shots, and new methods of developing.

As yet the club is one of the smallest in the school, but as interest grows, the club grows. Therefore, we will have to be more watchful and see that no camera is peeking around a corner for an unflattering angle shot.

## A Picture . . .

### CAMERA

Seated: Bob Harrison, Mr. Alan Shankland, Mae Eckart, Jane Jacoby, Gordon Engelbret.  
Standing—Bob Bauer, Pauline Burroughs.



### TAKE-N-EASEL

First Row—Alan Langstaff, Robert Lindsley, Bob Royer, Jean Robinson, Miss Dorothy Cowell, Evelyn Heinz, Doris Parker, Betty Sheridan.  
Second Row—Mae Eckart, Bernice Funk, Frank Triepi, Heler Bizjak, Jim McCormick.  
Third Row—Doris Carr, Eileen Brown, Frank Southwick, Frank Ferguson, Beverly Wilcox, Pauline Curtiss, Marjorie Wilcox.



## Scholars Belong To These

### Latin Club

"The mighty legions of Caesar" were nothing compared to these modern Romans. This organized group headed by Miss Adele Knight attracts school-wide attention by its calendar of activities.

New members receive citizenship if they serve well as slaves for a day and if they successfully buy their freedom from Hades.

At Christmas we heard much but understood little because our Romans went caroling in Latin.

A banquet, but not an ordinary banquet! Dressed appropriately in Roman togas the "hospites" reclined on couches in true Roman luxury, while the "servi" served delicious food prepared, according to recipes from Caesar, by the "coqui".

May brought its year's activities to a close with a good Americanized picnic with a treasure hunt in Latin.

Jacqueline Young served as president; Marjorie Gear as treasurer; Bill Petrovic, vice president.

### Scholarship Club

The aim of this club is to maintain and create a high scholarship standard. This year January had rolled around before the Scholarship Club became active. Seventy-five students had earned the title of "scholars". These "scholars" were guests of Madison at the county banquet. There Wiloughby had one county officer elected: Jack McGarry as treasurer. After the election the clubs exchanged ideas. One idea which our club adopted and put into effect was a student tutor system.

Our new adviser, Miss Ellen Buyer, and our officers: John Robson, president; Marian Smith, vice president; Pauline Schade, secretary; and Betty Deahl, treasurer, are planning to make the club more active next year.

## Two Clubs . . .

### LATIN CLUB

Row 1—Mary Jones, Jackie Young, Quata Burke, Elizabeth Deahl, Catherine Riehl, Muriel Swain, Jane Goodrich.  
Row 2—Miss Knight, Marjorie Saxton, Jean Clark, Evelyn Carl, Margaret Havens, Pat Doyle, Marjorie Gear, Frances Rolph, Gwyneth Goodwin, Dorothy Tatman, Connie Campbell.  
Row 3—Dotty Fairley, Marion Smith, Peggy McCann, Janice Raus, Jane Todd, Marie Petrovic, Betty McClure, Betty Hamilton, Arline Clayton, Dennis Daniels.  
Row 4—John Ely, Bill Petrovic, Jack Mertz, Karl Lemmerman, Wesley Pignolet, Wayne Wells, Robert Bornemann, Jack Lee Peterson, Roy Woods, Jack Coleman.  
Not Pictured—Harriet Kirk, Betty Jones.



### SCHOLARSHIP CLUB

Row 1—Jane Matthews, Helen Hills, June Wood, Dorothea Rossin, Lucille Tagliamonte, Lillian Daniels, Jacqueline Young, Catherine Riehl, Betty Ann Deahl, Jean Henry, Ada Green, Freda McClelland.  
Row 2—Miss Ellen Buyer, Barbara Bruce, Anna Ginevra, Arlene Clayton, Dorothy Hayward, Mildred Knouff, Emily Caster, Mary McGarry, Charlotte Kruger, Jean Hayden, Helen Cukar, Doris Neill, Evelyn Carl, Margaret Havens, Gwyneth Goodwin, Evelyn Lake, Mary Frew, Dorothy Tatman.  
Row 3—Arthur Buckles, Donald Powers, Esther Thompson, Jeanne Sherman, Marian Smith, Pauline Schade, Louise Hradecky, Florence Leonello, Phyllis Huthmaker, Ruth Cuthbertson, Jean Rose, Johanna Gockel, Mary Ellen Brillinger, Audrey Mason, Kathryn Dietz, Richard Johnson, Milton Murphey.  
Row 4—Joe Vohlers, Jack McGarry, Robert Disbro, Jay Reeve, Robert Bornemann, John Robson, Jack Vohlers, Karl Lemmerman, Jack Peterson, Robert Smith, George Rose, Howard Mitchell, Frank Gill, Jack Mooney.

## Students Develop The Art Of Social Relationship . . .

### Hi-Y

Under the sponsorship of Mr. W. O. Barker the Hi-Y has definitely grown this year. This year's initiation persecuted an increased number of Hi-Y pledges.

The football season introduced the first activity—the ever popular refreshment stand maintained by the Hi-Y—Christmas formal dance—triumphant success—entertained fathers at spaghetti dinner—none left over—temporary employment was found for pledges during initiation week.

In connection with the National Hi-Y the Club sent five members with their advisor to the conference at Youngstown, Ohio.

The meetings were conducted by the club's president Gilbert Meinke. His assistants were: Jack Vohlers, vice president; Bob Mitchell, secretary; Bob Stoiber, treasurer; Merle Stafford, Sergeant-at-arms; and Bill Phillips, chaplain.



HI-Y CLUB

First Row—Merle Stafford, Bob Mitchell, Jack Vohlers, Mr. W. O. Barker, Gil Meinke, Bob Stoiber, Bill Phillips.  
 Second Row—Dale Pickard, Hadley Kline, Jim Davis, Stuart Armington, Bill Petrovic, Charles Lemr.  
 Third Row—Frank Gill, Howard Lange, John Ely, Jack McGarry, Lloyd Jones, Bill Armington.  
 Fourth Row—Bob Randall, Bob Disbro, Bob Ziegler, Wayne Wells, Bud Jordan, Karl Lemmerman.

## Students Help With Office Work . . .

### Office Staff

Do you need a slip to admit you to class? Are there special errands to be run? Do you have a pleasing telephone voice?

These—and dozens of others—are the daily tasks of those very efficient and well mannered students who, under the supervision of Miss Winifred Sigsbey, form the general office staff.

The Commercial Office, set up this year, has been very helpful to the school as well as giving experience to advanced commercial students. Some of the duties of this staff, under the immediate supervision of Miss Dorothy Roberts, a member of last year's graduating class, are: issuing of books and supplies; mimeograph and ditto work, daily absence slips and reports; distribution of mail; and secretarial work for teachers.

The two groups combined form a staff of forty under the direction of Mrs. Mildred Boley. A special room of future members has been formed to acquaint them with office procedure.

This is a new organization, benefiting students as well as the school, and will progress in efficiency with age.



Miss Winifred Sigsbey  
Secretary



OFFICE STAFF

First Row—Charlotte Call, Betty Lou Heitzman, Ina Parker, Miss Winifred Sigsbey, Miss Dorothy Roberts, Janice Raus, Audrey Mason.  
 Second Row—Betty Rowland, Dorothy Tatman, Norrene Durant, Paula Rettig, Dorothy Hayward, Ida Moritz, Phyllis Jones, Mary Svec, Miriam Blecher.  
 Third Row—Mrs. Mildred Boley, Delores Fletcher, Gloria Granger, Freda McClelland, Glenn Booker, Raymond Shaffer, June Wood, Dorothea Rossen, Rose Mary Castelli.  
 Fourth Row—Louise Hradecky, Marion Schultz, Nat Gillette, Marion Heath, Edward Nichols, Mildred Green, Muriel Swain.



Miss Dorothy Roberts  
Office Girl



Happy Journey  
Lens College of Annual knowledge  
Noon dancers

23 skidoo  
Swing it!  
Sissies  
Afterwards

Winter Carnival  
Oh, you Beautiful dolls!  
When the Clock Strikes

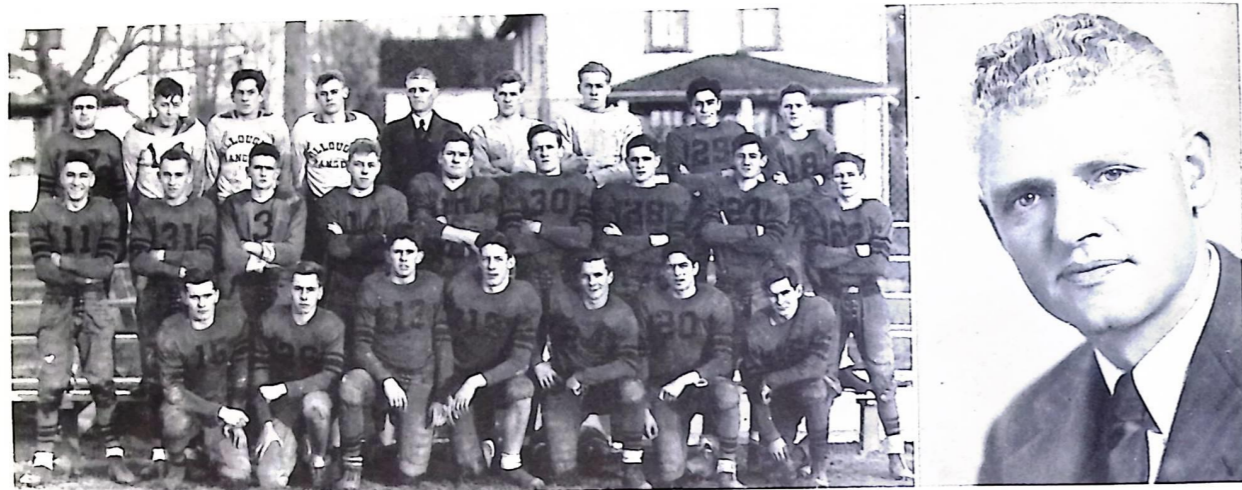
PORTFOLIO THREE

*Candidly Reviewing The Year's Activities*

PORTFOLIO OF ATHLETICS AND FEAT URES



## Football Creates Sportsmanship and



Bottom Row—Elmer Kaps, Jim Davis, Jack Hippler, Bob Zeigler, Gil Meinke, Mike Borrelli, Jack McGarry.

Second Row—George Noggy, Bob Marquardt, Frank Gill, Bill Long, Jack Vohlers, John Myers, Bob Mitchell, Benny Demilta, Merle Stafford.

Third Row—Charles Lemr, Bob Disbro, Don Bard, Homuth Sidewand, Coach Jean Smith, Arnold Southall, Bill Robinson, Angelo Stillisano, Tom O'Brien.

## Gridiron Review

September 1939—Eight lettermen and a large squad of inexperienced Sophomores and Juniors faced with eleven games, six league and five others—After nine night games and two day time ones, the Rangers finished fourth in the league, winning two and tying one—

September 15—Mayfield here—Willoughby 6—Mayfield 0—high point was the calling back by a penalty of a beautiful touchdown by Bob Mitchell after a 75 yard run—

## Friendly Cooperation . . .

September 22—at Brush—evenly matched play until Brush blocked the Rangers' punt and had only six yards to go for a goal—final result, Brush 6—Willoughby 0.

September 29—Madison, a weak opponent, traveled west for our next game—held the Rangers scoreless until the half when a revived team came back to beat them 19-0.

October 6—amid a terrific rainstorm the Rangers played their first league game with Ashtabula Harbor—Willoughby showed its power by holding its stronger opponent on the three yard line for a scoreless tie—



Jim Davis—Tackle  
Jack McGarry—End  
Charles Lemr—Tackle  
Homuth Sidewand—Guard

Merle Stafford—Fullback  
Jack Vohlers—Center  
Gil Meinke—Guard  
Bob Mitchell—Blocking Half

Johnny Myers—Guard  
Tom O'Brien—Back  
George Noggy—Back  
Bob Zeigler—Tackle

October 13—still raining—after a see-saw battle in which Willoughby gained only one more yard by rushing than its greatest rival, Painesville, the Rangers came through with a score 20-14—what a triumph!!

October 20—journeying to Fairport, a strong Willoughby team pushed the Mariners around to such an extent that an excited Fairport fan felt called upon to attack Arnie Southall on the three yard line—the final tally showed Willoughby leading 20-14.

October 26—playing before a capacity crowd the Rangers lost to the league champions, Conneaut, by a score of 33-0.

November 3—despite a spirited rally in the afternoon, the Rangers met unexpected defeat at the hands of a fighting Mentor team with a score of 6-0.

November 10—snowed under by a powerful Ashtabula team, Willoughby met its second league defeat with Ashtabula holding the Rangers scoreless.

November 17—another league rival Geneva met the Rangers on their own field and defeated Willoughby 13-7.

November 23—a turkey day engagement for the benefit of the band resulted in defeat at the hands of Painesville 18-0.

Thus finished the season with fifteen lettermen back to start the next year.



## Give A Yell! . . .

Yea team; Football rallies before important games with the auditorium walls fairly bursting from yells. The night of the game—the suspense with the team fighting for all it's worth, the crowd yelling for victory: win or lose, rain or moonlight, the cheerleaders were there. Charles' loud, "Come on, gang, there's a game to be won!" and Betty's appealing "Your support will hold them, so yell!" plus Jim's personality and gay victory leading and Charlotte's pep as she jumps from one stand to another certainly kept up the tempo of our spirit and cheering.

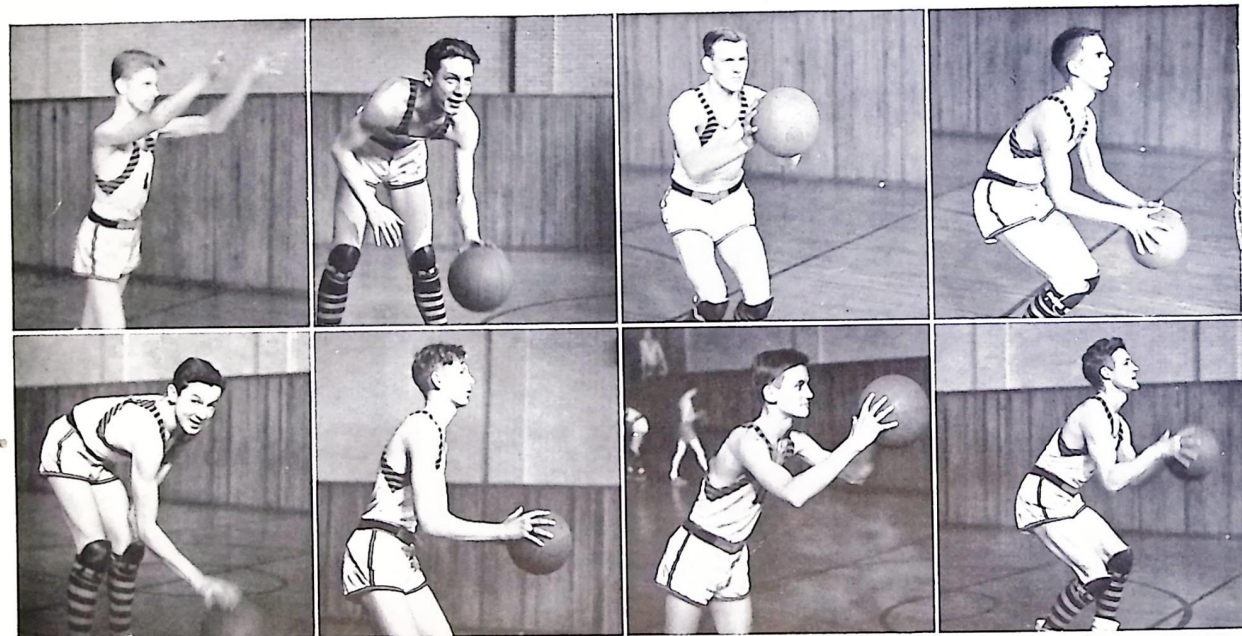
Mr. Harvey Helm and Miss Ethel Spaller worked with our cheerleaders this year, and made plans for a "Pep Club"; so that next year we can have a regular cheering section for games away from home as well as those at Lincoln Field.



Charles Marble  
Charlotte Call  
Betty Jane Rowland  
Jim McCormick

# Basketball - the Art Of Coordination

Richard Brain—Forward    Bob Zeigler—Center    Arnie Southall—Forward    Byron Hunsicker—Forward  
 Bob Rosplock—Guard    Bob James—Center    Pete Lucas—Guard    Captain Merle Stafford



Seated—Richard Brain, Louis Peters, Arnie Southall, Bob Zeigler, Bob James.

Standing—Bob Rosplock, Pete Lucas, Lyle Daniels.

Coach Ray Singer

# and Cooperation . . .

With a season of nine wins and nine losses, the Ranger's basketball team presents an interesting record to the person who has a statistical mind.

With its nine losses Willoughby scored only three points less than its opponents. Captain Merle "Willie" Stafford scored 136 points, 41 points higher than the next Ranger, Byron Hunsicker, with 85; and fourth highest in the league.

The team won three games and lost three by a margin of only one basket and two of those games had overtime periods.

All the members of both first and second teams are underclassmen, and statistics next year should be a joy to behold.

## HOW THEY FARED

Willoughby 19	Chagrin Falls . . . 29
Willoughby 26	Mayfield . . . . . 38
Willoughby 26	Geneva . . . . . 34
Willoughby 45	Ash. Harbor . . . 25
Willoughby 27	Fairport . . . . . 25
Willoughby 33	Euclid Central . . 30
Willoughby 33	Kirtland . . . . . 26
Willoughby 32	Painesville . . . . 43
Willoughby 33	Conneaut . . . . . 31
Willoughby 17	Ashtabula City . . 43
Willoughby 29	Mentor . . . . . 22
Willoughby 46	Geneva . . . . . 42
Willoughby 24	Ash. Harbor . . . 27
Willoughby 42	Fairport . . . . . 22
Willoughby 29	Painesville . . . . 31
Willoughby 27	Conneaut . . . . . 22
Willoughby 16	Ashtabula City . . 48

## Cindermen Excel In Track Competition

With four lettermen back this year, the track team is looking forward to as successful a season as the last two years have brought.

Captain Kenneth Lloyd, as well as Dick Mannino, Arnold Southall and Lloyd Jones are all seasoned and experienced men and should lend impetus to one of the largest squads the school has had.

Although the unseasonable weather prohibited early training out of doors and the first meet with Fairport was postponed because of heavy snow-fall, the team came through to start the season auspiciously by beating Fairport 91-27.

April 15	Fairport here
April 19	Mayfield there
April 25	Brush there
May 1	Painesville here
May 4	Mentor relays
May 10	Triangular meet with Painesville and Mentor at Mentor.
May 15	Lake Shore League at Jefferson
May 18	District Meet at Cleveland

### TRACK

Bottom Row—F. Gill, J. Hesketh, Frank Southwick, J. Reeve, R. Mitchell, J. Vohlers, W. Wells, Mannino, L. Jones, K. Lloyd, G. Shaffer, H. Groathe.  
 Second Row—R. Hamilton, J. Rosplock, J. Gill, D. Metzung, M. Murphey, M. Stafford, W. Phillips, K. Lemmerman, R. Woods, R. Janos, R. Coughlin, R. Sidewand, W. Lessler, R. Nungesser, R. Wilde, Coach Smith.  
 Third Row—R. Lucal, R. Zeigler, R. Rosplock, R. Murphy, V. Schneider, G. Bannerman, J. McGarry, C. Marble, F. Southwick, F. Ferguson, E. Sigsby, M. Ruple, R. Pintar, M. Groatre, G. Pallak, D. Witcraft.  
 Fourth Row—W. Petrovic, R. Brain, J. Florio, Joe Vohlers, R. Tittle, H. Wawrenek, B. Colburn, C. Everett, F. Cantrell, B. Smith, R. Conklin, R. Ray, Ed. Rider, R. Myers, H. Somnitz.



## The Sports Season In Candid

The lamb we didn't have Mentor On  
 Football Queen  
 Alumni  
 Yea Team  
 Bench Warmers  
 —and then Mentor arose from the dead

Support the three mill levy!  
 On parade  
 Coach  
 Time out -  
 Hold that line!  
 Action!  
 Home coming practice





# Senior Census

NAME	NICK NAME	FAVORITE SAYING	OUTSTANDING MEMORY	KNOWN BY	AMBITION	PET PEEVE
Stewart Armington	Stewie	I'll see you later	Hi-Y, Senior Play	Friendliness	Aeronautical Engineer	being called cute
William Armington	Bill	Oh, you kid	Sr. Play, kissing Millie Knouff	Good looks	College honors	sarcasm
Harold Arndt	Pug	Ah phooey!	Baseball	Quietness	Farmer	homework
Lee Bidlingmayer	"Biddy"	It's what you are that counts	Band, Shopwork	Girls		egotists
Bruce Bixel	Bix	Mien gott im himmel	German dictators	Gaiety	Good job	women
Helen Bizjak	Blondy	Ignorance is bliss	Art, Commercial Club	Artistry	Dietician	too much make-up
Glenn Booker	Shorty	Poets are born not made	Comm., office, a certain girl	Truthfulness	Aviator	homework
Stanley Boor	Battling Boor	Could be	Stage work, Conservation	Love of nature	Conservation	"senioritis"
Lillian Bozeglav	Lilly	Gosh	"W" Club, Comm. Club	Shortness	Commissioner	being tickled
Mary Ellen Brillinger	Peanuts	So there too	F. C. Cabinet, N. H. S.	Friendliness	To go west	conceited people
Quata Burke	Candy	By-carbonate	Senior Play, English classes	Part in Senior Play	Nurse	class colors
Charlotte Call	Ce-Ce	Foo	Senior Stunt, "W" Club	Cheerleading	Nurse	two-faced people
Emily Caster	Fancy Pants	Has the last bell rung?	F. C. Cabinet, Dramatic	Her nick name	To own a 50 ft. yacht	nick name
Jean Clark	Jennie	Oh Johnny!	Johnny	Johnny	Johnny	"senioritis"
Eileen Claywell	Sis	Vas you der Charlie?	F. C. and Senior Year	Dark hair	Secretary	9th periods
Helen Clifford	Shorty	Shucks	Comm. Club, F. C.	Quietness	Dr's assistant	sour notes
Francis Cummings	Fran	That's what you think	'38 Solo Contest, Hi-Y	Part in German band	Successful musician	having to hurry
Pauline Curtiss	the mad artist	Oh, Fuzz	Art Club, F. C.	Art	Artist	red fingernails
Ruth Cuthbertson	Ruthie	A little learning is a dangerous thing	Eng. classes and S. Club	Eng. notebooks	Nurse	rubber band
Winifred Dann	Wini	Wait up for uncle	F. C. Stunt night, F. C.	Preciseness	Concert organist	shooting
Lillian Daniels	Maggie	Heavenly days	Dramatic Club, S. Club	Music	shooting	Rubber-band
Bennie DeMito	Irish	We're moving	Football	Football	Fashion designer	Two-faced people
Robert Disbro	Diz	"Hi"	Football, Hi-Y	Motor cycle	Make a lot of money	Women
Patricia Doyle	Pat Doyle	I didn't do it	Last two years in Soph. Latin	X'mas Prom	Flying	Called Bobbie
Jane Duff	Duffy	About the middle of May	The day we completed the Annual	Blue eyes, editor	Nursing	Sar-cas-tea-chus
					Journalist	Called Annie

NAME	NICK NAME	FAVORITE SAYING	OUTSTANDING MEMORY	KNOWN BY	AMBITION	PET PEEVE
Margaret Durk	Durkie	O My	Miss Sawyer	Height	Economist	Scotch dialect
Henry Eaton	Hank	Imagine That	Band, Miss Broderick	Having run a good race	To be a minister	Ninth period
Annamae Eminger	Peggy	I can't think	When I was bearded lady in S. N.	Being full of fun	Singer	Idlyly chatter
Mike Fernolend	Mike	H'ain't it the truth?	Dispute with Ave	Beard	Doctor	Short skirts
Ildemor Fields	Dee	Really	Fr. Club initiation	My part in S. N.	Nurse	Called Allie
Josef Florio	Fish Face	Why, sure	Campus in Spring, Miss Broderick	Fencing Capt.	Doctor	Borrowing without asking
Bernice Funk	Bonnie	I told you so	First day at school	Art Club	Artist	Egotistical people
Frances Gallagher	Francie	Could be	Prom, F. C.	Singing in S. N.	Music	Girls
William Garrett	Red	I don't know	Senior year, Rifle Club	Versatility	Chemical Engineer	Teachers of Eng.
Frank Gill	Fuzzie	I'll wait	Football, Hi-Y	Good timer	Musician	Stuck-up people
Nat Gillette	Nattie	Excuse me	First dance, Scholarship team	Himself	West Point	Not Johnny
Victoria Glayvac	Vickie	Every dog has his day	Stunt Night	Shape	Wife	Boy pinchers
Johanna Gockel	Jo	Heavens-to-Betsy	Basketball game	Herself	Dramatics	Boys with lines
Nat Goodwin	Curly	Say, now	Prom	Physique	Aviation	Gold diggers
Donald Graham	Lefty	No, thanks	Boys' Quartet	Friendliness	Baseball player	Ninth periods
Marian Hanks	Hefty	Say	Barber's quartet—S. N.	Her Ford	Secretary	Sarcasm
Dorothy Harrold	Dot	You'll never know	Senior Play	Speeches	Business career	Gushy people
George Hauptkorn	Korny	What's the use	12 long years—Senior play	Shyness	Aviation	Poor Sport
Betty Hayden	Smarty	Oh! my goodness	F. C.	Quietness	Bookkeeper	Kibitzer
Jean Hayden	Jeanie	You wouldn't dare	Homework—N. H. S.	N. H. S.	College	Temperamental people
Dorothy Hayward	Dottie	Aw G'wan	Senior tests	President of N. H. S.	Private Secretary	Gum cracking
Betty Lou Heitzman	Beautiful	Upsa-daisy	Mr. Shankland	Master of Ceremonies of S. N.	Stewardess	Lockers
Robert Heitzman	Boob	Jeepers	Two years in Soph. Eng.	Haircut	Lumberjack	Giggling gals
Ruth Henderson	Dimples	"Billy"	Can-Can dance—S. N.	Friends	Lawyer	Unfair people
James Hesketh	Spider	No time like the present	Mr. Helm	Track ability	Mechanic	Unfair teachers
Louise Hradecky	Louie	Really	Shorthand test	Scholarship	Professional work	Talkative people
Richard Johnson	Tiny	You can't prove it	Scholarship Team	Forgetfulness	Easy money	Dishwashing
Elizabeth Jones	Betty	Why not?	Freshman Mentor Test	Alertness	College	Conceited people
Phyllis Jones	Phil	Well, all right?	Mr. Helm—Science	Auburn Hair	Secretary	Being called 'Red'
Branche Jordan	Bud	Say, now	My friends	Bow ties and "hot" socks	Diesel Engineer	Grouchy teachers
Eugene Judkins	Jeep	We're off	Track Champs	Ninth Periods	Coastguard	Ninth periods
Harriet Kirk	Kirky	Oh, I don't know	Journalism class	Honor Study	Dietitian	Egotism

THANKS TO —

Mr. H. B. Hurst, Our Printer  
Mr. Russ Snyder, Pontiac Representative  
Mr. Charles Laughridge, Photographer

CIRCULATION COMMITTEE

Bernice O'Brien	Bill Petrovic
Betty Sheridan	Bob Mitchell
Charlotte Call	Dorothy Fairley
Dorothy Harrold	Peggy McCann
Bill Armington	

ADVERTISING COMMITTEE

Bob Randall	Gilbert Meinke
Claire Sprackling	Bob Mitchell
Wayne Wells	Merle Stafford
Howard Lange	

The Student Council, for their contribution  
and co-operation

FEATURE COMMITTEE

Emily Caster	Harriet Kirk
Jack Vohlers	Ruth Henderson
Wesley Pignolet	Jean Hayden


The Commercial Office for their patience and  
typing.



# The ADVERTISERS



The advertisers of the Lens have made possible  
the publication of this book. You can show  
your appreciation by patronizing them. Tell  
them, "We saw your advertising in the Lens."



# WILLOUGHBY

*A City Of Opportunity*

- . . . . Finest Educational Facilities
- . . . . Churches for All Creeds
- . . . . Municipally Owned Utilities
- . . . . Active Service Organizations
- . . . . Home of Thriving Industries
- . . . . A Neighborly Residential District
- . . . . Home of Andrews School
- . . . . Rich in Historical Lore

PREPARE YOURSELF  
TO BECOME A USEFUL CITIZEN  
OF THIS FINE COMMUNITY  
AND PLAN YOUR FUTURE TO

**GROW WITH WILLOUGHBY**

**THE WILLOUGHBY  
CHAMBER of COMMERCE**

## FAIRLEY'S GROCERIES COTHRELL'S MEATS

Quality and Service  
That  
You Can't Beat

**Phone 135-136**

Compliments From

### SOHIO

WILLOUGHBY HI-LEVEL  
SERVICENTER

**N De Joy, Manager**

L. Harvey	W. Farrell
W. Trout	J. Jackopen
R. Graham	H. Palm
	D. Winchell

In Willoughby  
Call  
WILLOUGHBY  
**119**

In Painesville  
Call  
PAINESVILLE  
**4593**

## HERMAN DRY CLEANING CO.

LAKE COUNTY'S  
LEADING CLEANER

Ladies' and Men's Garments—Hats—  
Gloves—Drapes and Blankets  
REPAIRING—ALTERATIONS  
PRESSING WHILE YOU WAIT  
SUITS TO ORDER

Prompt Delivery Service By Courteous  
Drivers

The High School

### "Searchlight"

Appears Each Week In The

## NEWS-HERALD

Be Sure You Get a Copy of  
Every Issue at Your  
Home

**Greeting Cards**

For All Occasions

**Cottrell's News Stand**

26 Erie

Phone 39

**RAY'S**

**Tasty Sandwiches**

**Loganberry**

**and**

**Cold Drinks**

**Chardon Rd.—1 Mi. W. of SOM**

Compliments of

**WILLOUGHBY  
KIWANIS CLUB**



**"WE BUILD"**

**Meets every Tuesday 6:15**

**at Masonic Temple**

Air Conditioning Sheet Metal Work

**E. H. Bernhardt Co.**

PLUMBING—HEATING

Willoughby

9 Third Street

Phone 77

*Congratulations and Best Wishes*

**TO THE CLASS OF 1940**

**From The Educational Committee of the Vocational School**

**and the Students of the Vocational Classes**

**THE OHIO RUBBER COMPANY**

**WILLOUGHBY, OHIO**

## LENS SPONSORS

Boost the Merchant Friend Listed  
Here—Who Help Pay for Your Lens

### **RICHMAR RESTAURANT**

Meet Your Friends Here  
Route 20 Mentor Ave.

### **WINFIELDS**

A Pleasant Place For All—  
Come and Enjoy a Grand Evening

### **THE CLARK AND PIKE CO.**

Insurance—Title Abstracts  
10 Euclid Ave. Willoughby

Compliments of

### **ROY L. MONCRIEF, INC.**

Dodge and Plymouth Cars—Dodge Trucks  
50 Euclid Avenue Willoughby, Ohio

### **POLITE BEVERAGE COMPANY**

Distributors of 7-Up and Pepsi-Cola  
9 Elm St., Willoughby

### **Cut-Rate Furniture Store**

Dean D. Fuller, Prop.

Phone Willoughby 944-W-2

## **J. B. COLE, INC.**

AUTHORIZED DEALER

"MERCURY"

YOUR LOCAL DEALER IN "TRANSPORTATION NEEDS"

**TRUCKS AND COMMERCIAL UNITS**

Phones 306-307

97 Erie Street

Willoughby, Ohio

COMPLIMENTS OF

*Philip A. Meinke*

**OHIO "CUB" DISTRIBUTOR**

## **WILLOUGHBY Ice Cream & Candy Center**

Fairmont's Ice Cream Sold Exclusively



## **KOSTER'S SWEET SHOP**

9 Erie Street

Phone 295

## **OUR CONGRATULATIONS**



Success to you, seniors — and to the resumption of Year Book Activities. The entire personnel of this organization extends best wishes for success in whatever may be your future activity. We hope this store, long familiar with the requirements of the student, will continue to enjoy your patronage.

**GAIL G. GRANT, INC.**

PAINESVILLE

**"Better Buy Buick"**

**Willoughby  
Buick Sales and Service**

**11 Second St Will. 837**

Compliments of  
**H. F. Simon, Inc.**  
Men's Wear

Shoes for the Family  
HOME OF W. L. DOUGLAS SHOES

Telephone 26-J Willoughby, Ohio

**GOODYEAR LIFE GUARDS**

**Will Protect You, Your Family  
and Your Car**

**Goodyear Service**

94 Erie St., "Red" Davis, Mgr., Willoughby

**Day and Night Phone 462**

**PAUL CAGE**

**ELECTRICAL GARAGE SERVICE**

We Specialize in Motor Analyzing  
Carburetion and Ignition

**WILLOUGHBY, OHIO**

**Ivan Peterson**

eighteen, second street

finer flowers

**Baker Drug Co.**

Willoughby's Only Independent  
Drug Store

37 Erie Street Phone 52  
**WILLOUGHBY, OHIO**

**Quality Shoe Store**

6 Erie St.

**SHOES FOR STUDENTS**

**Make Our Store Your Store!**

Congratulations  
from

**Martinson's Willoby  
Restaurant**

74 Erie Street Willoughby, Ohio

COMPLIMENTS OF

MR. AND MRS. WALTER P. GOCKEL

SPRANKLE, TRUCKING CO.

## CONTRIBUTORS TO THE LENS

These Merchants and Friends Have Helped Make Possible  
The Publication of The Lens 1940—Patronize Them—

GEORGE NEVILLE

E. J. MOLONEY

W. M. SNYDER

J. O. SYKES

C. E. REHBERG

LEWIS F. WYFORD

SHEFFIELD DAIRY

DR. J. D. NELSON

DR. O. T. BATTLES

E. B. KIMMEL

C. W. SPRAGUE

McCARTHY RESTAURANT

JOE MARINO

ALFRED L. MOORE

FRITZ REUTER

GOLD MARKET

G. A. McKAY

O. D. PARKER

SOLOMNE BARBER SHOP

J. E. CASTER

# BE SURE

To Tell The Merchants

"We Saw Your Advertising in the "Lens"

## Frigidaire Range \$99.95 up

Frigidaire 6 Cu. Ft. Refrigerator \$122.75

Philco Radio—Hoover Cleaner

Bendix and Maytag Washers

**WILLOUGHBY HARDWARE CO.**

Phone 349

Compliments of

## Clara M. Richardson

LUZIER BEAUTY SERVICE

40 Euclid Ave. Willoughby, O.

Phone 108

# WRIGHT'S

● A Friendly

Spot to Shop

WE GIVE THRIFT STAMPS

11-13 Erie St

Phone 779

Compliments of

## Davis Funeral Home

36 Clark Avenue Willoughby, Ohio

## Haberdasher ● Shoes

Nationally Advertised Brands

QUALITY—PRICE

## Ernst Birkholz, Inc.

15 Erie St.

Willoughby, O.

## J. L. Prokop & Sons

FLORISTS

"SAY IT WITH FLOWERS"

Telephone 88

Lost Nation Road Willoughby, Ohio

## The WILLOBY THEATRE

Euclid Avenue  
WILLOUGHBY, OHIO

## William Meil, Inc.

DRY GOODS

64-66 Erie Street Willoughby, Ohio

## James A. McMahon FUNERAL HOME

Music Supervisor in Willoughby  
for Twenty-Five Years

51 Euclid Avenue Telephone 162

## F. O. E.

John F. Claire, president  
Wayne Meyers, secretary

WILLOUGHBY AERIE 2300

Compliments of  
Your Official Photographer

CHARLES T. LOUGHRIDGE  
WILLOUGHBY, OHIO

# Lake County Gas Co.

WILLOUGHBY

MENTOR

WICKLIFFE

WILLOWICK

FAIRPORT

## Official Jewelers

for

WILLOUGHBY HIGH SCHOOL  
CLASSES OF 1939-1940

**SPARTAN JEWELERS**  
BUFFALO, N. Y.



# PONTIAC

ENGRAVING  
& ELECTROTYPE CO.

812-22 W. Van Buren St.  
(Chieftain Building)

CHICAGO, ILL.

## "FRIZZELL'S"

ICE CREAM

Is A Health Food—Gives You Pep  
and Vitality For Sports—Eat More of

FRIZZELL'S

## FLY

The New Lycoming—50 Taylorcraft

**DEWEY-ELDRED FLYING SERVICE**

Student Instruction      Airplane Sales  
Lost Nation Airport  
WILLOUGHBY, OHIO

## WILCOX WINS

In June 1939 Again—Wilcox College  
Students Awarded First and Second  
Prizes In

**Accountancy at the World's Fair  
New York City**

Wilcox College will train you for one of  
the better positions.  
FREE EMPLOYMENT service for all  
graduates.

R. N. WILCOX, Pres.

Call MAin 2425 for Information

**WILCOX COLLEGE  
OF COMMERCE**

MAin 2425

Public Square Bldg.

## Edgerton Food Store

E. C. Edgerton, Prop.

COMPLETE FOOD SERVICE

Phone 23

53 Erie St.

Delivery Service

## Kleifeld's Restaurant

73 Erie Street

Willoughby, Ohio

GOOD COFFEE ALWAYS

WE NEVER CLOSE

## "Good Food Is Good Health"

Special School Lunches at 25c  
Home Made Ice Cream  
Open Sundays All Summer

## Olsen's Restaurant AND ICE CREAM PARLOR

56 Erie Street

Willoughby, Ohio

MEMBERS OF THE STAFF WISH TO THANK ALL THE STUDENTS AND

ADVERTISERS FOR THEIR SUPPORT.

# The Class Of 1940

PRESENTS THIS PAGE IN SUPPORT OF THE LENS

## MEMBERS

Stewart Armington  
Bill Armington  
Harold Arndt  
Lee Bidlingmayer  
Bruce Bixel  
Helen Bizjak  
Glenn Booker  
Stanley Boor  
Lillian Bozeglov  
Mary Ellen Brillinger  
Quata Burke  
Charlotte Gall  
Emily Caster  
Jean Clark  
Eileen Claywell  
Helen Clifford  
Francis Cummings  
Pauline Curtiss  
Ruth Cuthbertson  
Winifred Dann  
Lillian Daniels  
Bennie DeMilla  
Robert Disbro  
Patricia Doyle  
Jane Duff  
Margaret Durk  
Henry Eaton  
Annamae Eminger  
Mike Fernolend  
Ildemore Fields  
Josef Florio  
Bernice Funk  
Frances Gallagher  
William Garrett  
Frank Gill  
Nat Gillette  
Victoria Glavac  
Johanna Gockel  
Nat Goodwin  
Donald Graham  
Marian Hanks

Dorothy Harrold  
George Hauptkorn  
Betty Hayden  
Jean Hayden  
Dorothy Hayward  
Betty Lou Heitzman  
Robert Heitzman  
Ruth Henderson  
James Hesketh  
Louise Hradecky  
Richard Johnson  
Betty Jones  
Phyllis Jones  
Branche Jordan  
Eugene Judkins  
Harriet Kirk  
Mildred Knouff  
Frances Koci  
Agnes Kostrab  
Charlotte Kruger  
Howard Lange  
Allan Langstaff  
Henry Leonello  
Betty Lette  
Kenneth Lloyd  
Richard Mannino  
Tony Manta  
Ted Marchal  
Mike Marino  
Edward Marquardt  
Audrey Mason  
Freda McClelland  
Jack McCullough  
Robert McFarland  
Flora McGurer  
Patricia Meil  
Gilbert Meinke  
Doris Metzung  
Williams Meyers  
Robert Mitchell  
Betty Mohun

Ida Moritz  
Milton Murphey  
John Myers  
George Noggy  
Bernice O'Brien  
Ina Parker  
Virginia Perrin  
Myron Pfeiffer  
William Phillips  
Dale Pickard  
Tomas Quinn  
Robert Randall  
Jay Reeve  
Catherine Reihl  
Jean Robinson  
John Rosplock  
Dorothea Rossen  
Betty Rowland  
Victor Schneider  
Richard Schrock  
Marian Schultz  
Dorothy Seibert  
Clifford Seibold  
George Shaffer  
Ray Shaffer  
Betty Sheridan  
Jeanne Sherman  
Homuth Sidewand  
Claire Sprackling  
Robert Stollard  
Anthony Solomone  
Carlyle Sulzer  
Mary Svec  
Margaret Tough  
Thelma Vickroy  
Jack Vohlers  
Pauline Witherite  
June Wood  
Jack England

# Our Imprint . . .

**W**E consider that our IMPRINT is the equivalent of a *guarantee*. It's not mere advertising. It doesn't appear on much of the printing that we produce, because it isn't expected to intrude . . .

But when you see it you may be sure that the firm on whose printing it appears may have suggested it themselves. They know that it is the Hall Mark of a printing house that has earned the reputation of honest work well done. That's why they like to be identified in their business dealings with the imprint:

THE PAINESVILLE TELEGRAPH

To use this is a constant challenge. It's one thing to have earned a reputation . . . it's another thing to continue to merit it. And that is what we strive to do in all of our dealings with our large list of clients.

We are Printers.

## The Painesville Telegraph

*Commercial Printing Department*

46 North State Street

Painesville, Ohio

MUSEUM  
COVERS  
(1)