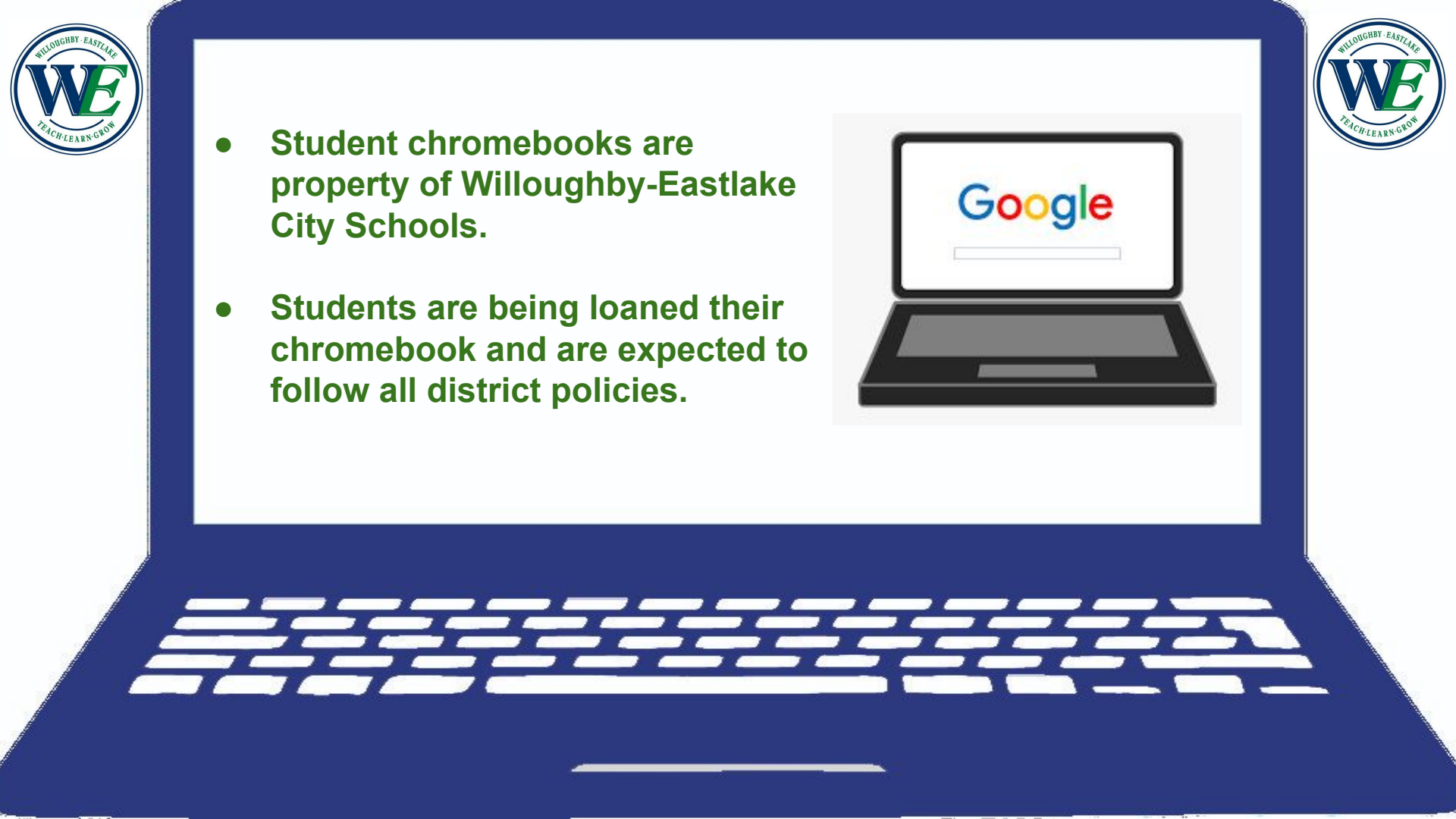
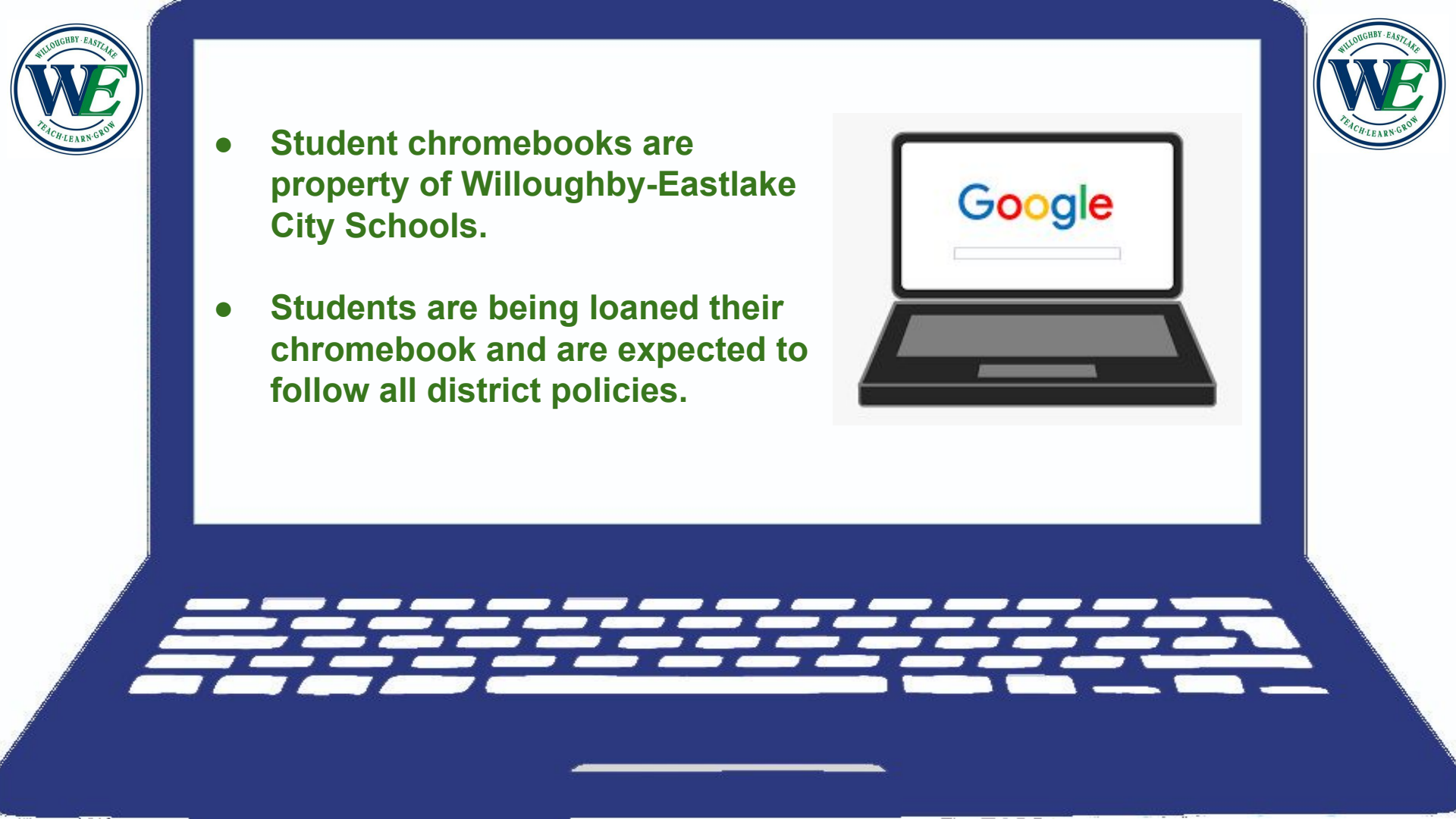


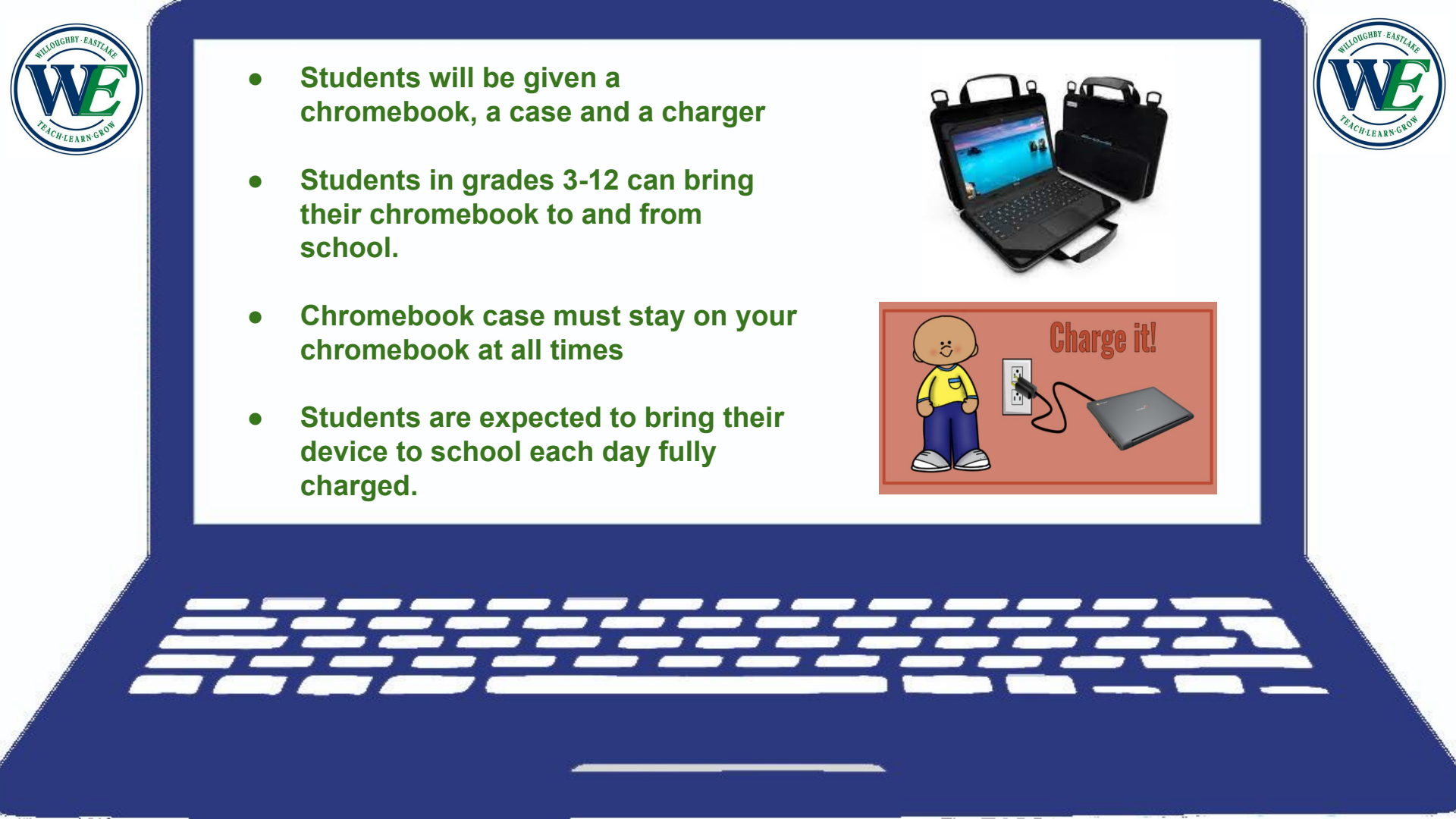
Chromebook Expectations for Students



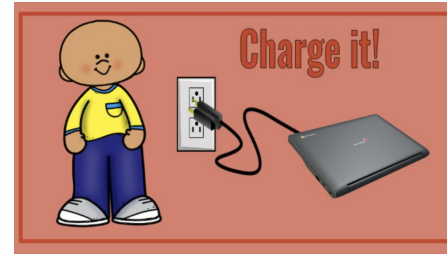


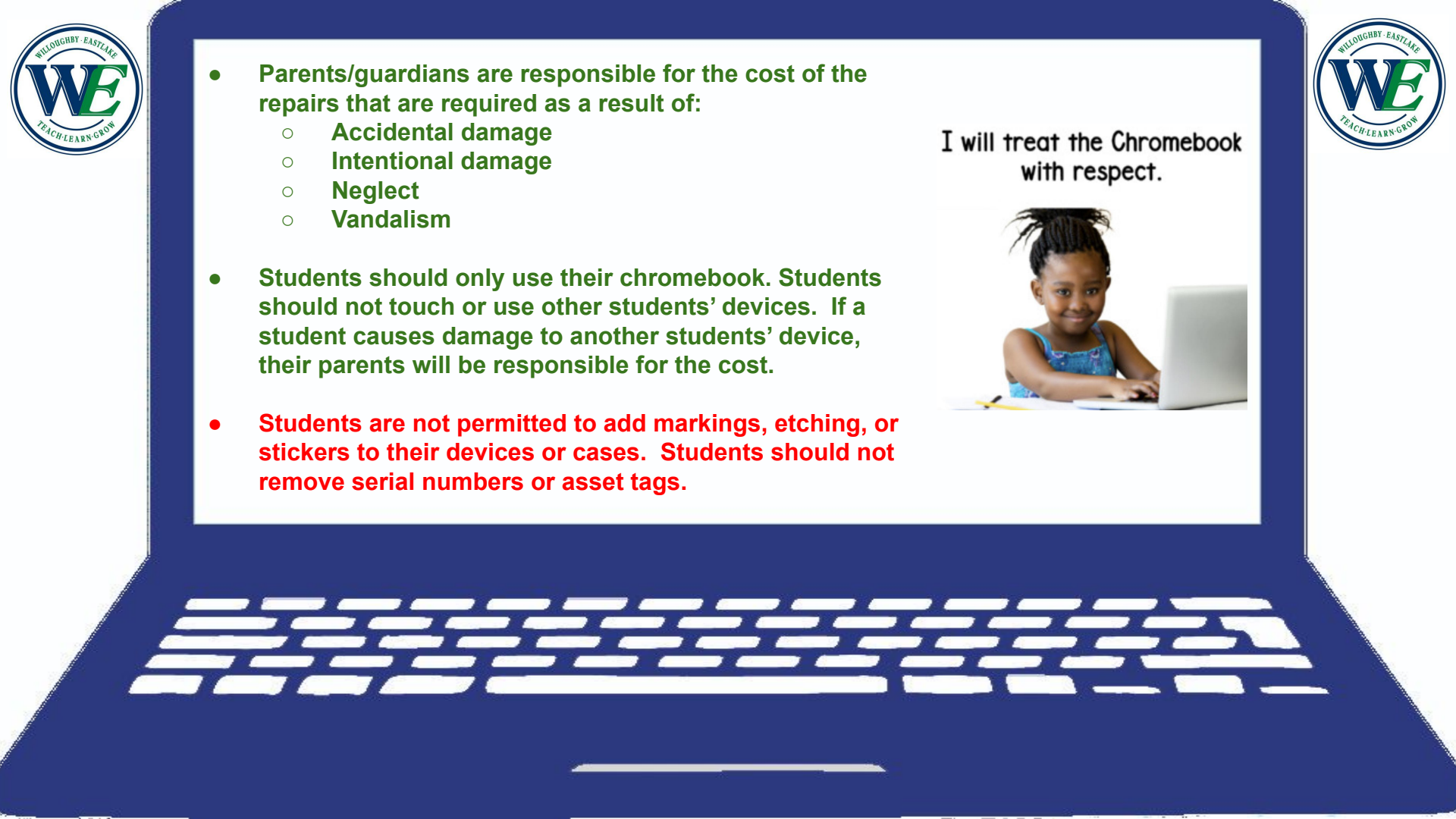
- Student chromebooks are property of Willoughby-Eastlake City Schools.
- Students are being loaned their chromebook and are expected to follow all district policies.





- Students will be given a chromebook, a case and a charger
- Students in grades 3-12 can bring their chromebook to and from school.
- Chromebook case must stay on your chromebook at all times
- Students are expected to bring their device to school each day fully charged.

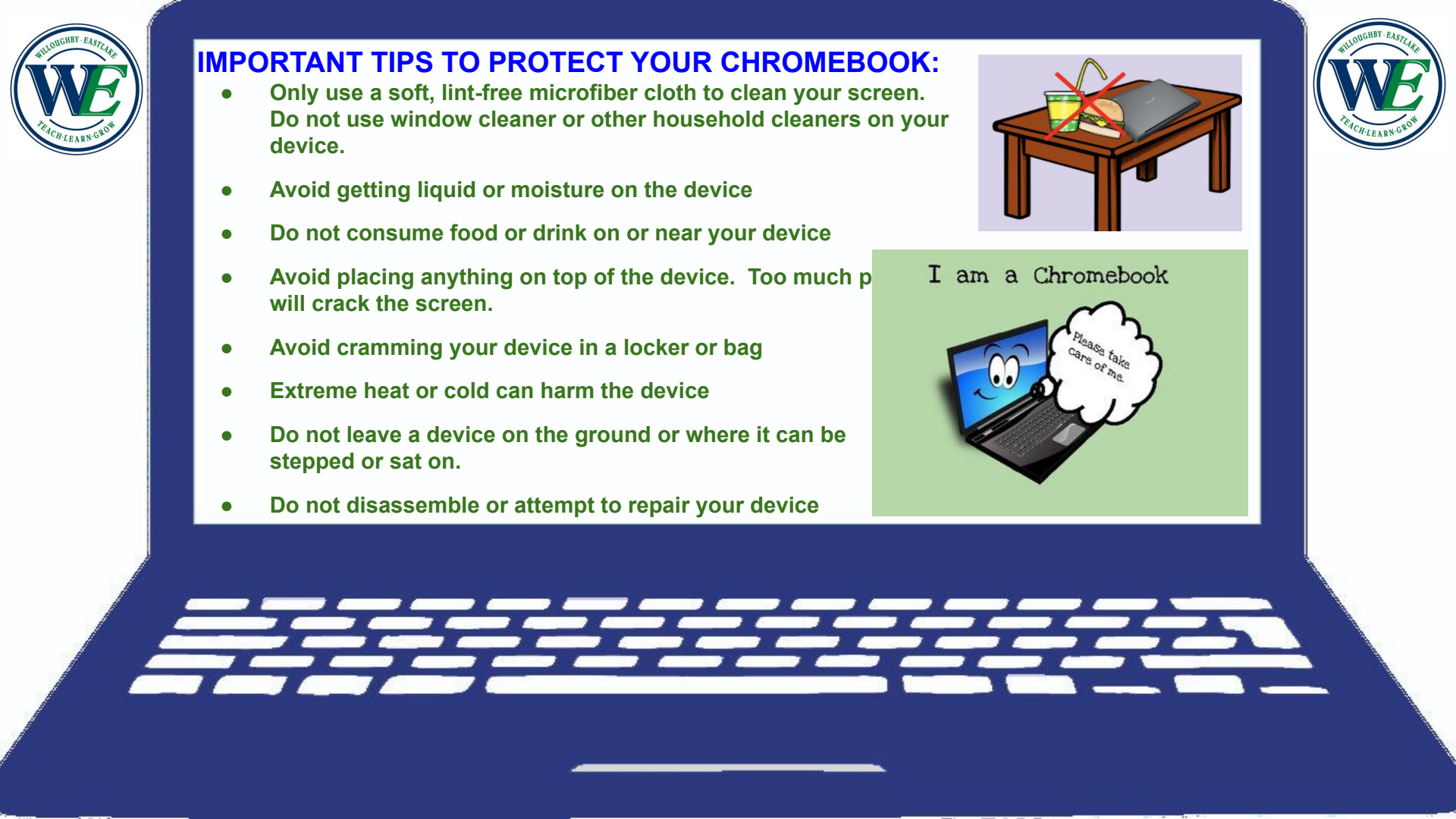




- **Parents/guardians are responsible for the cost of the repairs that are required as a result of:**
 - **Accidental damage**
 - **Intentional damage**
 - **Neglect**
 - **Vandalism**
- **Students should only use their chromebook. Students should not touch or use other students' devices. If a student causes damage to another students' device, their parents will be responsible for the cost.**
- **Students are not permitted to add markings, etching, or stickers to their devices or cases. Students should not remove serial numbers or asset tags.**

I will treat the Chromebook
with respect.





IMPORTANT TIPS TO PROTECT YOUR CHROMEBOOK:

- Only use a soft, lint-free microfiber cloth to clean your screen. Do not use window cleaner or other household cleaners on your device.
- Avoid getting liquid or moisture on the device
- Do not consume food or drink on or near your device
- Avoid placing anything on top of the device. Too much pressure will crack the screen.
- Avoid cramming your device in a locker or bag
- Extreme heat or cold can harm the device
- Do not leave a device on the ground or where it can be stepped or sat on.
- Do not disassemble or attempt to repair your device



I am a Chromebook





- W-E staff has the right to collect or inspect a students' chromebook at any time.
- Students are expected to appropriately use their chromebook, email and all district programs.
- W-E staff is able to monitor what students are doing on their computers through a program called Lightspeed.
- The district is able to view current and past student activity on their chromebook (search history, email, downloads, pictures, files, etc.)



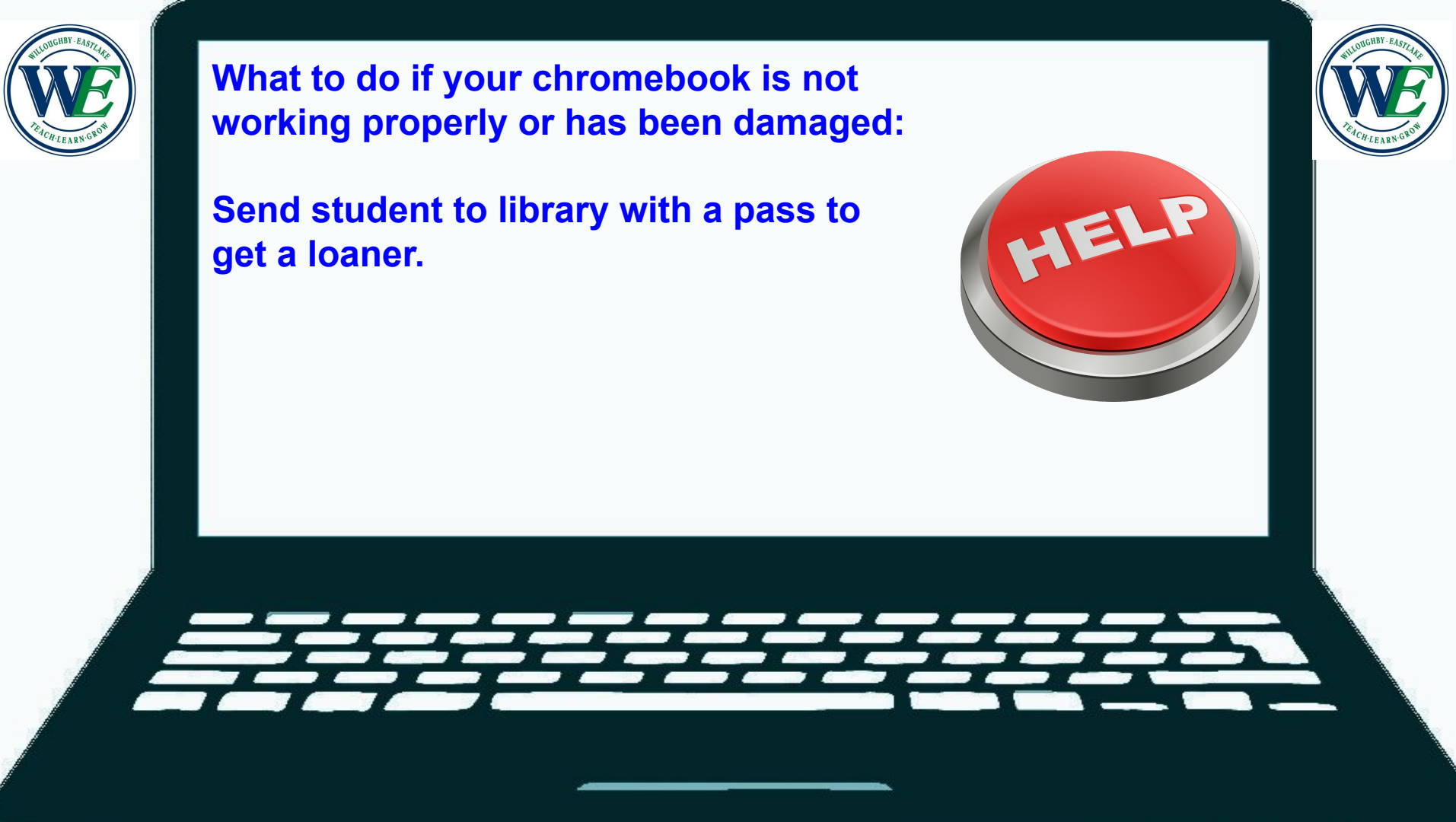


Disciplinary action can be taken if students:

- Use the chromebook to attack, annoy, harass or bully others.
- Use the chromebook for inappropriate or illegal activity.
- Engage in theft, vandalism, or other criminal acts of their chromebook or others.

MAKE
GOOD
CHOICES

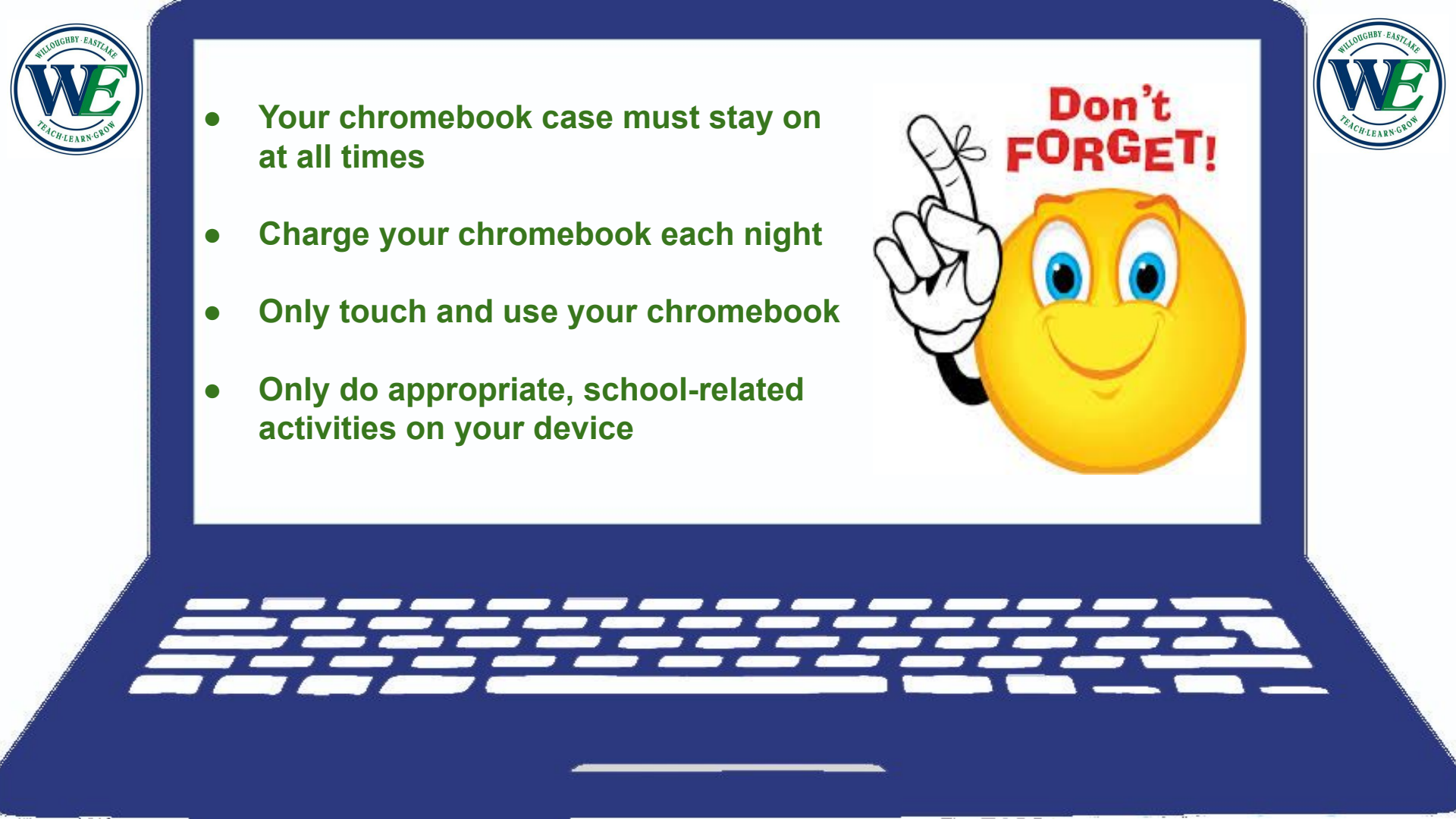




What to do if your chromebook is not working properly or has been damaged:

Send student to library with a pass to get a loaner.





- Your chromebook case must stay on at all times
- Charge your chromebook each night
- Only touch and use your chromebook
- Only do appropriate, school-related activities on your device



